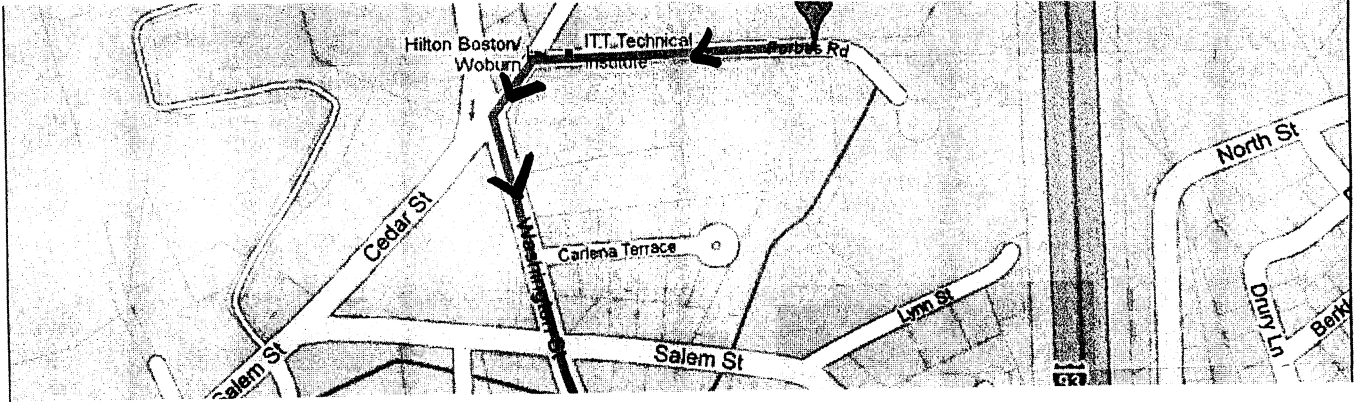
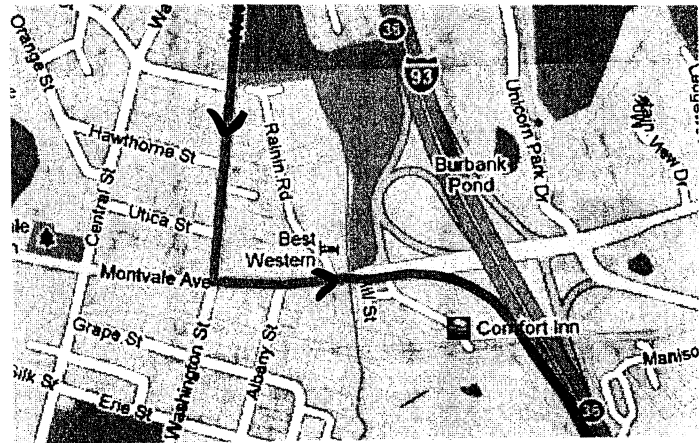


DIRECTIONS: HILTON (2 Forbes Rd, Woburn, MA) to AAVSO HQ (49 Bay State Rd, Cambridge, MA)

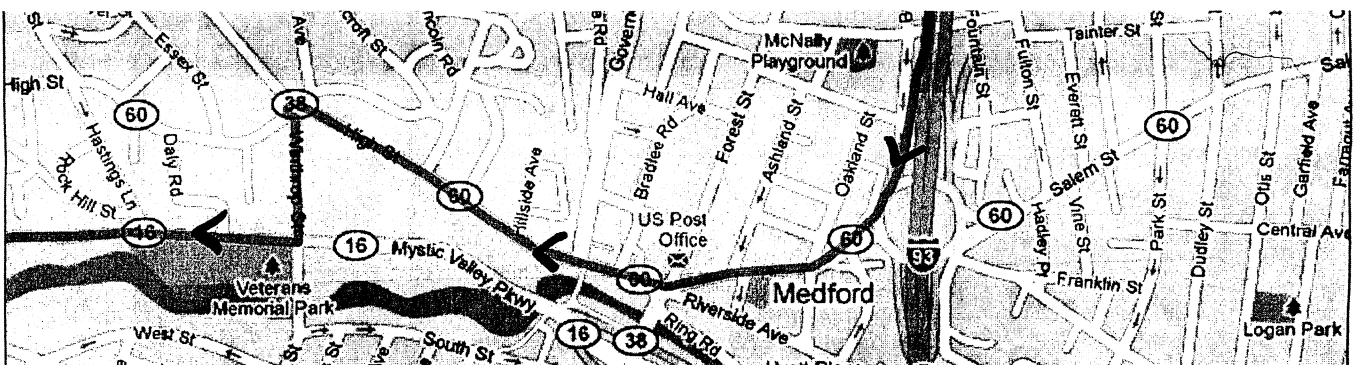
1. Head west on **Forbes Rd** toward **Cedar St** 0.2 mi
2. Turn **left** at **Cedar St** 207 ft
3. Take the 1st **left** onto **Washington St** 1.1 mi



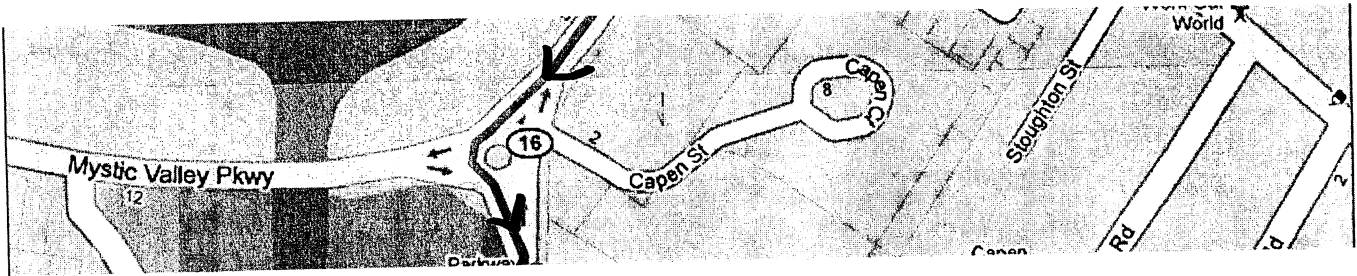
4. Turn **left** at **Montvale Ave** 0.2 mi
5. Merge onto **I-93 S** via the ramp to **Boston** 4.2 mi



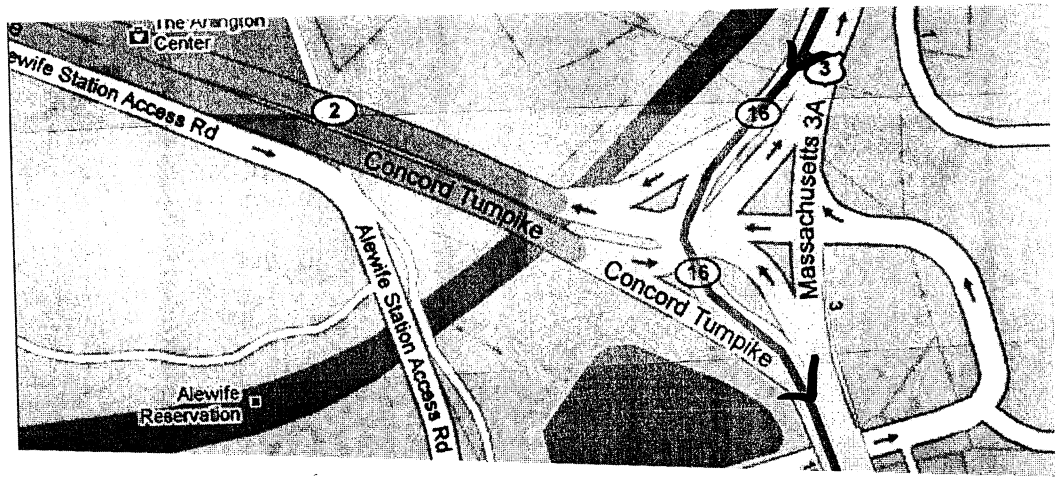
6. Take exit **32** for **MA-60** toward **Medford Square/Malden** 0.1 mi
7. Continue straight 177 ft
8. At the traffic circle, take the **1st** exit onto **Brookside Pkwy/Salem St** 0.3 mi
9. Continue onto **High St** 0.5 mi
10. At the traffic circle, take the **3rd** exit onto **Winthrop St** 0.2 mi
11. Turn **right** at **MA-16 W/Mystic Valley Pkwy** 0.8 mi



12. At the traffic circle, continue straight onto **Alewife Brook Pkwy** 1.5 mi



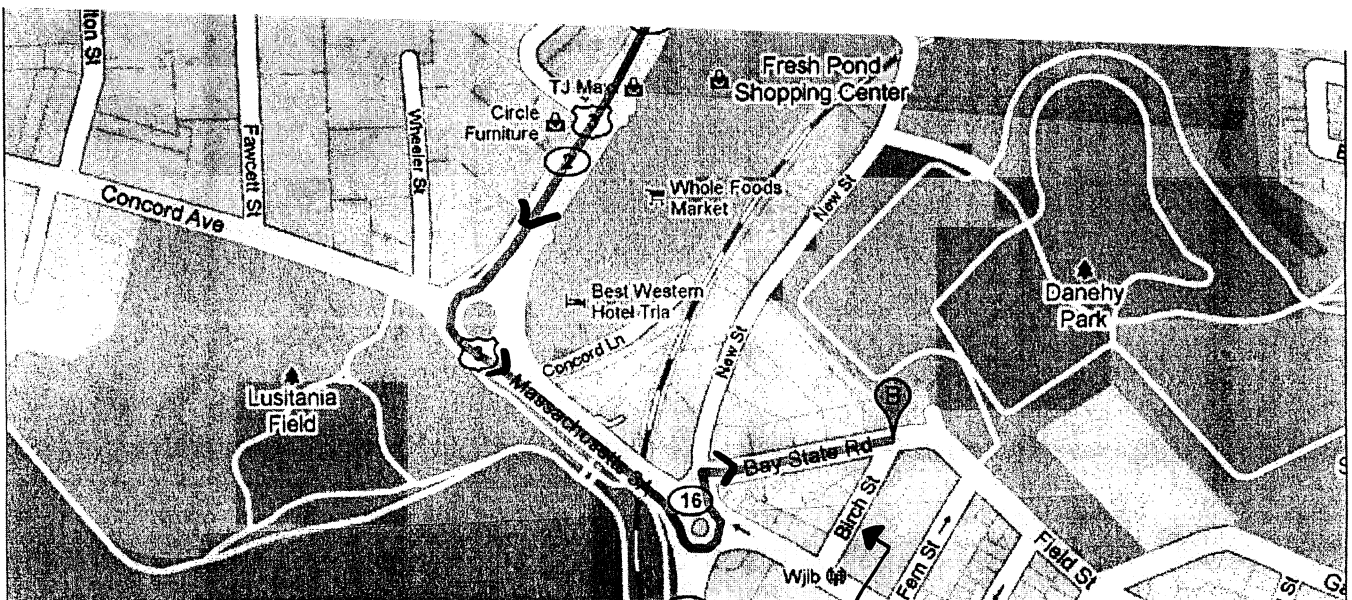
13. Continue onto **Massachusetts 3A S** 0.7 mi



14. At the traffic circle, take the **2nd** exit and stay on **Massachusetts 3A S** 0.2 mi

15. At the traffic circle, take the **3rd** exit 390 ft

16. Turn **right** at **Bay State Rd** 0.1 mi
Destination will be on the left



You may park on Bay State Road or on Birch Street.



Directions to American Association-Variable

49 Bay State Rd, Cambridge, MA 02138-1203 - (617) 354-0484

10.2 mi – about 25 mins

Save trees. Go green!
 Download Google Maps on your phone at google.com/gmm

