

(A) (B)

12

G61-21

12

55 11

+15 57

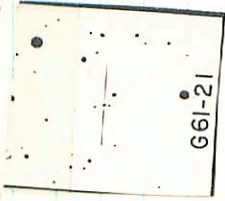
15.2 + 2

54 53

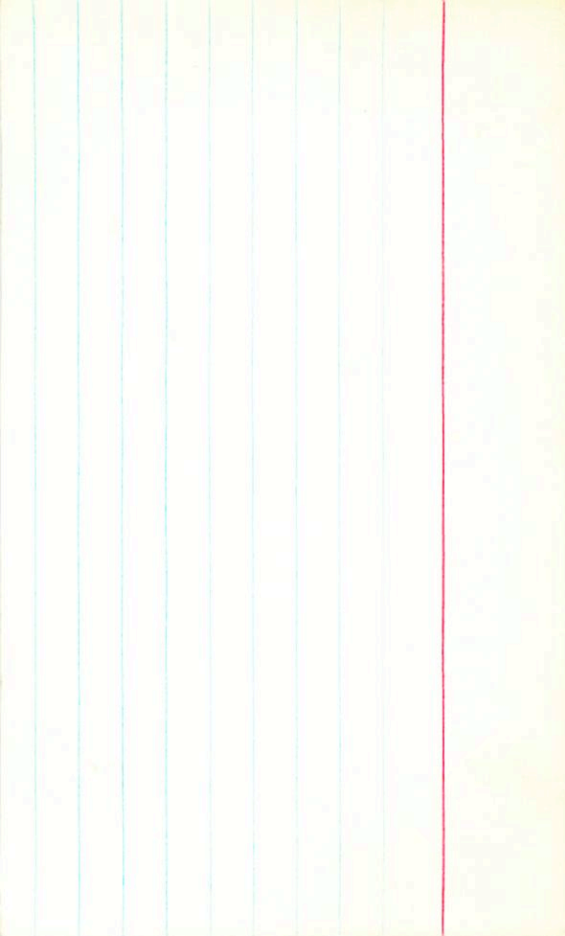
50

13.95 + 1.28 + 1.025 12 months

$12.98$      $70.48$      $26 \text{ Apr } 75$      $41'' \text{ LT}$   
 $12.57$      $70.54$      $30 \text{ Apr } 75$      $40''$   
 $\hline 12.98$      $70.51$



" 1.40  
 14.524



BPM 78596

-485-1335 BPM  
-500-1305 G  
-480-1305 T

LFT 956

12 5-4.0 +15 59

L1264-57

1383 +129 +105 (2)

G61-21

1248 +0.51 (2)

.017 (23)

207



$$\begin{array}{r} -1055 + 225 \text{ G} \\ -992 + 148 \text{ H} \\ \hline \end{array}$$

$$662-15 \quad 13 \quad 06.2 \quad +8 \quad 20$$

Sub

$$.022 = 106$$

$$144 + 10$$

$$15.3 - -$$

$$13.52 + 1325 \text{ @}$$

(R, B)

LPT 970

13 07 29

-40 00

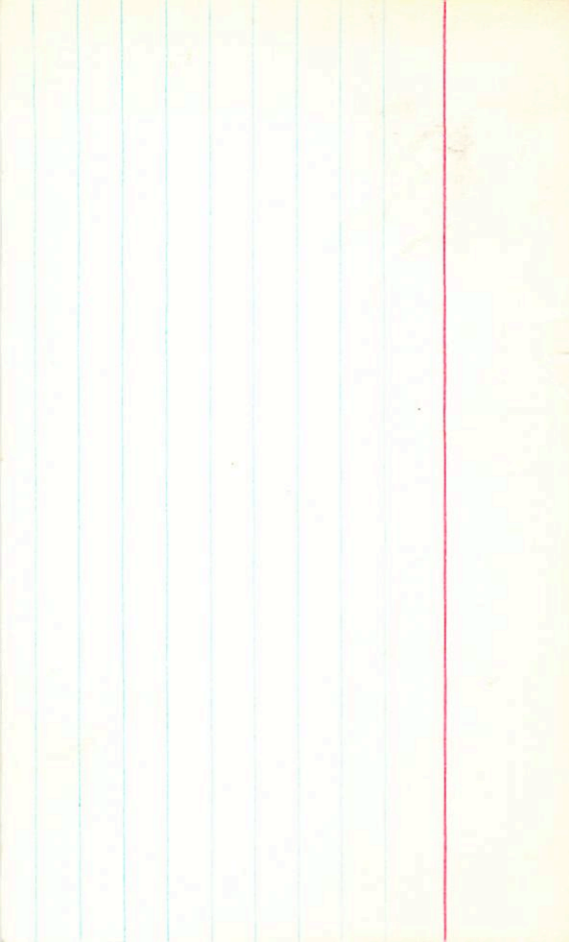
$\frac{144}{1}$  m, 1.20

320 59.5

12.96 + 1.605 + 1.095 <sup>12.005</sup> - 7.5

⊙

11.48 + 1.09 26 Apr 15 27<sup>40"</sup> CT



BPMS8816

13 08 49 +22 39

RT

-805-6458 AM  
-885-715 G

LFTG74

13 07.6 +22 46

-866-740

L133730

✓

GU-35'

~~12.45 +1.12 +0.82~~

12.45 +1.10 +0.89 (2)

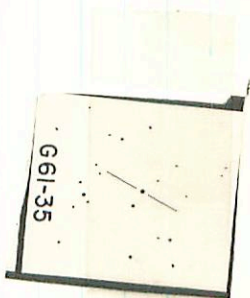
LP378-629

1.13 230°

NEWBI 1204 4511

012





+720-560 RPM

13 07 49 - 40 00

BPM 56802  
(RF)

LIFT 970 13 06.4 - 39 52

14.4 am

L472-66

+1.10  
12.86 + 160 + ~~1.10~~ ①

11.55 + 1.175 21 Mon 76

(RF)

①

-1075 -1075 GC

GL18007

LFT950

B 15.8 ~~18~~ 02

-17035B

4.74 +0.71 +0.27

GLT-8.5

4.43 +0.235 sh

.116 (114)

212



Blom

LF978

13

09.5 +28 08

-800 -875 6-6

GG974

60V +6.1

430 +0.56 +0.05

405 +0.20

SLT

.120 89

112

Imms

LFT 966

B 02.1 -52 09

-810 -830 I mm  
-800 -800 B PM  
-785 -820 C eye  
-740 -815 II

-5107244

842 +37.8

9.11 +134 +1255 (2)

8.30 +0.58 (5)

0.47 (9)

208

Pass 1020

LF 5999

13 21 48 +24 36

13 20.6 +24 44

Pass  
-615-875 OPM  
-605-940 G  
146-73

G144-81



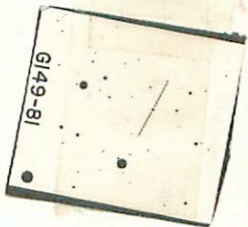
12.93 + 16.2 + 11.2 ①

11.70 + 1.26 (2.26)  
11.50 + 1.24 (3.04)  
11.63 + 1.235 (3.075)

23

11.61 + 1.245 ②

149/94  
CWL





Row 460

LFT 1012

13 27.5 +10

29

+1020-1090 RPM

+870-870 RPM

+1140-1065 G

+1145-1070 II

+1102576

905 +150 +122 ⑤

AVI +11.1

G63-24

748 +0.82

⑤

.127

②

②15



BPM 89081

LFT 1010

13

26.9

+11

43

+320 -1200 BPM

+360 -1205  $\frac{6}{11}$

+345 -1055  $\frac{11}{11}$

L-144-26

G63-32

.050 (10)

12.14 + 1455 + 0.97 (1)

10.90 + 1.095 (2)

(ME)



13 29 21 +19 17.5

-470 -1370 G  
-500 -1280 II  
-500 -1276 III  
13 28.1 +19 25.5 ?

G149-94

Chart  
See 149-81

B 2148  
1st 56

0.5 \* bank  
0.5 56 2000

at  
2000 2007

14.74 + 1.79 + 1.96

14.82 + 1.83 -  
14.74 + 1.79 -

14.74 + 1.81 - (2)

(1)



13.11 + 1.345 12mm  
12.55 + 1.35 13 "  
1.482

Case

13

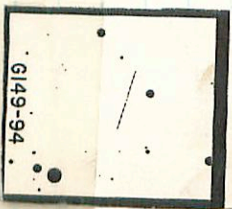
14

17

19

23

22



G149-94







Wap 489

LFT 1023

13 342 +3

57 ~~3740~~ 1170 FT

-3750 -1220 Wap  
-3650 -1060 BPM  
-3730 -1070 G

G 62-83

Wap  
MND

DR

1468 +0.96 +0.37 ①  
1425 +0.33 ④

~~1023~~

812



GC18587

LFT1031

13 42.6 +18 03

+435 -1850 GC

+1802776

dm1+224

9.83+142 -117 (2)

GC3-15 .094 (2)

842 +0.64 (3)

220



-1025 -235 Row  
-1135 +325 C

Row 1026

LIFT 1028

13 38.1 +44 01 144 +2

G177-51

hit



+1780 -1455 Q-C

G-619602

LFT 1034

13 48.2 +15 10

①

+152620

8.446 +1.44 +1.11

G-63-53

M4E +15.2

7.44 +0.86 567

1202 58

221





+360 - 985 6-  
+355 - 585 5-  
+361 - 959 7-

C165-47 14 048 +38 52-

036 (D) 2000

040 (20)

043

14.54 +170 -

(223)