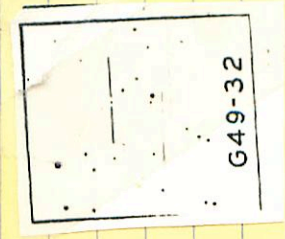


44-82

09 55 20 +22 45

13.4 15.3

th



✓ 221 ✓

12.63 +1325218779

09527-1916 ✓

09 54 08 - 19 24

13.0

14.2

12.0

• •

⊙ : ⊙

12.67

+0.9974774

12.68

+0.9974774

12.65

+0.9974774

2210

-17° 31' N

10

11 10

-18

30.5

9.5 - 11.5 am

121098-1922

1098-1822

(8)

1322

8.55

10.6521879

15.5

10.7021879

10.7021879

15.5

10109-3530 10 12 05-35 38.5

131 14.6 m

✓

①

2233

1171 +1070 202174

43-24 10.02 30 466 04 12.3 140 m

2217



11.88

11.88 +1.113 212679

11.87 1.13

Wiss

60130 -8238 ✓ 10 12 10 -82 46.5 114.12.5^{hr}

2288

10.21 707055874

East Card W

10130-8286

APR

(5 2479) 10.31 + 0.715
(5 2474) 10.21 + 0.705
10.26 + 0.710 5 2479

10.14 + 0.719 15 Jun 79
10.28 + 0.7185

G43-36

10 12 25

+13 30

14.2 15.8 pm

2208 ✓



1402 +0.54221829

10206-5953A 10 21 35 -60 02

" (10.0 11.7 m

B

12 (20 13.5 m



SCIENCE HALL AT 9C.6

h/pscc

12M (OSM

USST

USST

from K. Seh-

USST

SCIENCE HALL AT 11.26

(long) (long)

G-162-32

10.12.6 - 0925

10 14 50

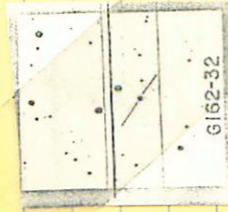
-09 33.5

11.8 12.9

R



2240



(A)

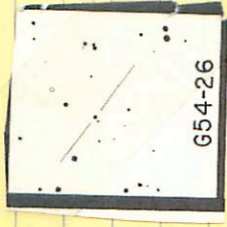
11.07 10.499 202874

11.13 10.513 202882

11.10 10.506 (C)

54-2b ✓ 10 24 20 +26 38 134 142 k-m

2260



1177 +1205 / Mar 74

LFT 722 → 10 3005 -51 B ← A-9 13.8 g-k
3857 → 10 ~~258~~ 51 03 13.7 g-k 0.59

249-17

N

↓
•••
•

(A)

2576

11.37

+0.204

$\frac{11.57}{11.45}$

0.747

$\frac{2.18774}{+0.7222}$ (2)

June 1579
June 1579

12.39 + 1.90 + 1.06 29.35

54-29 ✓

10 27 45

+27 09

12.7

14.3^m

2271

* Not used
on hand

the Brighton Area

not on



G54-29

13.00

+0.4302m₂₄

10236 - 49 40 10 24 45 -49 49.5 12.5

to-m
12.5

(0)

✓

✓

2261

(No)

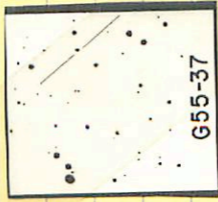
13.11 40.42 / 202679

(X)

→ 11.5 / 40.882 10 mm 87

~~#307~~
55-37 ✓

10 41 35 -03 48.5 135 150^m



2295

11.1

1.13

0.57
544
1512 ~ 0.22

12.55 + 1255 / Mon 24

11.3 4124
10.2
515
0194
416

44-27 ✓

10 35 00 +0.5 13.5 11.8 13.4

2285 (+)



11.15 + 1.169 2 Mar 29

$$\begin{array}{r} 11.20 \\ \hline 11.15 \\ \hline 1.181 \end{array}$$
 1.193 29 April

(Signature)

Mo. 6

44-24 ✓

10 32 40 +16 09

13.5 15.3^m



G44-24

5

13.24 +1.1962 Mar 79

10460 ^{-29 52 2} ~~-30 52~~

10 47 20 ~~31 01~~ 12.9 149^m

✓ ~~Chick~~ ^{Try →}

~~-30 01~~

①

2311 ⁽⁺⁾

yes ~~not~~

| | | |
|-------------|--------------|-----------|
| 12.05 | +0.750 | 2 Mar 19 |
| 12.05 | +0.767 | 25 Apr 19 |
| <u>1205</u> | <u>+ 758</u> | ② |

10 475 -79/12

10 47 55 -79

21.5
13.8 15.3

✓
Lupinus
Lupinus

①

2310

→

the first part

R

the second part

18

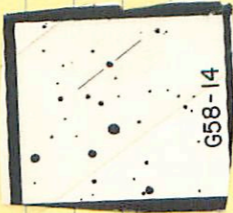
12.10 +0.337, 10m

11.53 +1276 202879
11.66 +1217 10m
11.94 +1246 ②

58-14 ✓ 10 43 50 +23 41.5 RL-132

(A)

2304



11.88 +1.036 2 Mar 79
 11.55 +1.010 10 Mar 79
 11.92 71.023