

12424-1534

2625

12 44 30

-15

435

146 154

R_{-m}

(+)

1356 +0.938 (1 Mar 87)

12 569 + 0800

2657

Q

5

14.5 17.0

mt

12 58 25 + 17 50.5

66

14.07 60.61 + 1522 (17m 87)

1612543

1276-1707 ✓

12

49

05

-17

16

10.3-11.16

.

RMF

⊙

9.93

+0.502

2 May 74

12462-1056 124745 -1105 13.9 15.6^m

✓

Q.

gent

•

1350 40611 21074

12 583 + 1034

2665

12 59 50 + 12 29 93 11.2^m

⊕

8.67 + 0.858 142481
595

172 273 G
~~711 268 BPM~~
loop

~~12 54 34 412 80.5~~
12 58.3 +12 39

llh (4)
55.5
55
+12
+1.11
+1.11
~~10.75~~
9.75 + 1.44 (6)
8.14 + 0.96 (3)

-6.40 -20

loop 462
LF 7964

+1302618

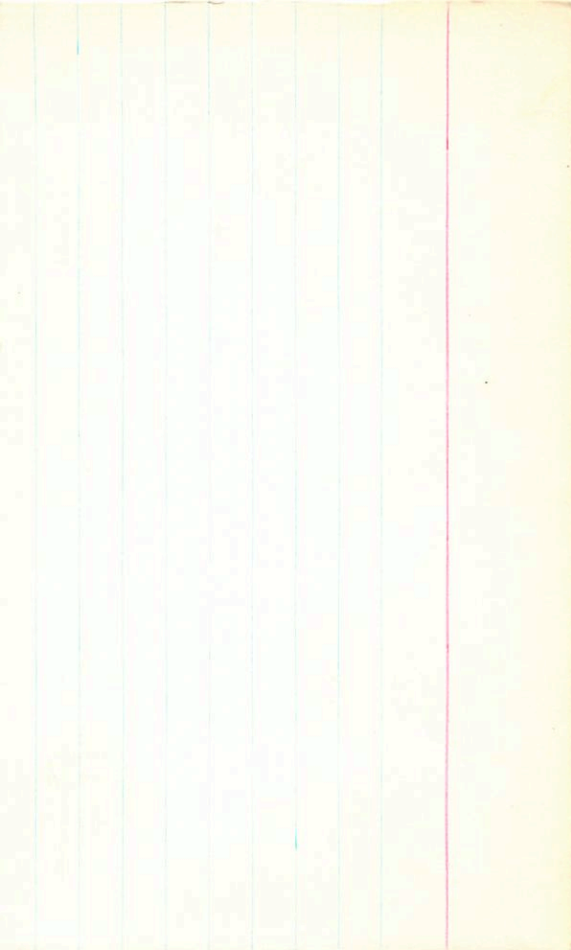
660-57

BPM 198680

loop 140

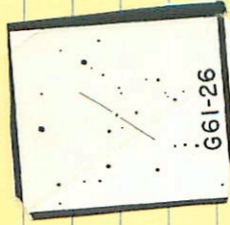
-636 -19 71 X

Out



61-26 12 58 50 +20 25 13.7 15.2^m

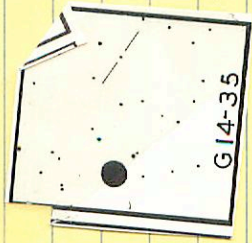
✓ 2660



13.30 -1.084 17m79

14-35 ✓ 13 08 10 -05 25.5 13.8 15.1
b-m
4

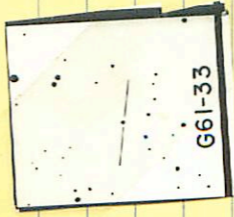
265r



1319 46797 2 Mar 74

61-33 ✓ 13 07 50 +16 29 12.1 14.3^m

2650



11.67 +1.041 17m29

12583-6255

m

13 00 05 -63 05 10.5 12.3

2668

Ⓟ

992 11.823 14.281

13095 ✓ -33 22

13 11

05

-33 31

124-13.5^R

Anything of this

kind ok

word is a 5 "long" 2642

of which the 5th

is 4

11.22

10.7922 27.26

13093 -1825 13 09 50 -18 34.5

13.0 14.5^m

2678

0

13.22 +1.067 2 Mar 79

13069 - 3435

13 08 20

- 34 44

130 141 h

2653

①

1411

407852/10024

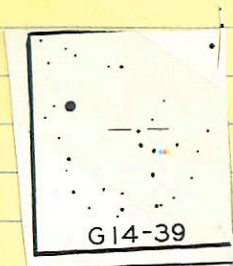
14-39 ✓ 13 13 25 03 59

201 BII
and int. B. 62'

2701

12.44 + 0.95 + 0.30 (3)

12.40 + 0.35 (2)



✓
12.34 + 0.36 22 Mar 24

✓ 13108 321 ✓ 13 12 20 -32 20.5 136.15.2^m

• (0) 26.95

12.98 41.07 / 2 Mar 24

100
100

61-41 ✓ 13 12 05 + 20 15 123 141^m

-600 + 149 ✓ 13 100 #30 07 619284⁰

-680 1998

2695

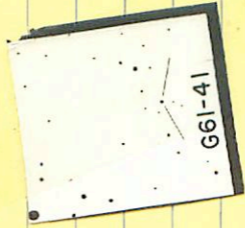
6171

2895

28

0651

053



5

1152 + 1140 1200

1145 + 1140

61-44 ✓

13 14 25

+16 22

132 179^m

2708



12-72 +1068 17074

✓ 13 130 -5501

13

14

~~50~~

-55 10

me

13.2 14.7

~~13.2~~

2707



~~11.30~~

+0.8943m24

11.32 + 0.8943m24

11.31

10.884

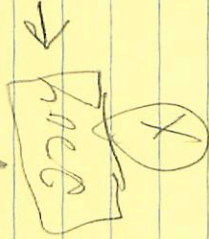
13126 -7252 ✓

13 14

15

-73 01.5

13.5 / 15.0^m



11.79

+1.0833m²g

11.81

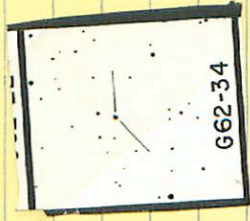
+1.07711m²g

11.80

+1.080

62-34 ✓ 13 20 35 +03 52.5 11.8 13.5

2728



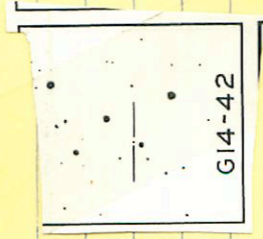
10.26 40.907 17m29

14-42 ✓ 13 15 10 -02 41

13.8 15.4

2509

1.33



13.27 40.998 / 11/10/74