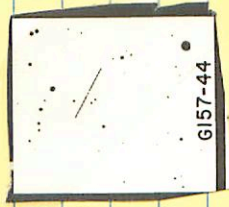


✓  
157-44

23 18 25 -03 345

12.7 14.5 m

3424



12.76 +0.657 201479

23145-4228 23 16 30 -46 (5.85)

10.8 15.2 m

3924



At cloud level  
and

12.84 1.143 19.02.79



24-30 ✓ 23 24 15 + 00 5/15

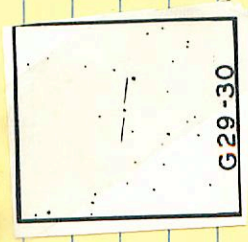
~~1146~~

12.07 + 1.44 + 1.16  
SR

2940

11.7 / 28 k

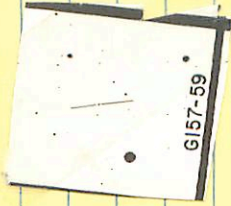
11.06 + 0.820 14 Aug 74



157-55 ✓ 23 23 40 -03 10

12.8 14.2 mm

3547



12.69 + 1.026 2017.74

✓  
273-15

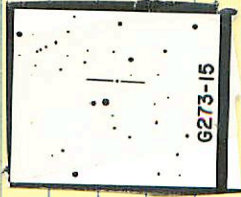
23 19 00

-12

49.5

120 148 m

3432



12.83 + 0.680 20479

29-33 ✓

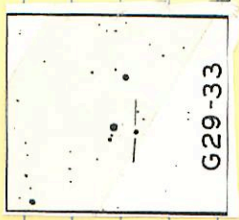
AF33

23 25 10 +08 47

3947

11.6 B.7 k

10.54 +1.91 +1.15



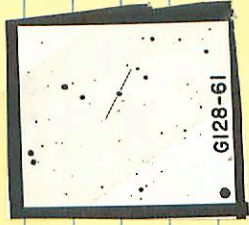
G29-33

9.54 +0.983 15A<sub>g</sub><sup>29</sup>

128-41 ✓

23 24 55 +29 05.5

8546 10.5 12.1 13



10.53 +0.363 2014y29

✓  
68-16

23 24 55 40 32

5.52 424 25.5

3548

SAI Tri 8.21



12.58 + 0.724 2014.76



5463 ~~4252~~

23289-4707 23 25 35-46 57.5

14.7 16.2 m

~~5463~~

(+)

5463

14.7

1354 4531 5058 5044 5040

3955

23239-7818

23

26

08

08.5

3955

(X) (A)

13.2-14.7 m

12.13 10.90885470

12.13 10.93885470

12.13 10.923

3948a

2

(+)

23 25 40 - 22 50

12.5 15.0 m

13.20 + 0.538 12.5 m

3900

218566

~~2308~~

05

-02

22.5

8.60

+1.02

3959  
23268-4704

23 28 25 -46 54

(\*) ⊕

12.6 M.L m

~~NO~~ 12.73

11.98

+1.209 85.180

12.73

+1.796 80.183

12.73

+120.2(2)

3956

23253-4043 23 26 55 -40 33.5

3956 (+) (+)

13.7 14.9 m

NO

(12.86 + 1.250) 8 Sept 1981

12.94 + 1.028 8 Oct 81

157-64 ✓ 23 26 15 -02 53

19.6 161 m

2953

14.13 + 0.660 19.14 79



3975

23321 -4712

23 33 45

-47 01.5

~~-46 58~~

12.4 13.9 m

④

12.44 +1.0969520



20 243 + 1540

68-24 ✓ 23 80 50 + 19 49.5

41405116A, B

3965

3.5 (10.1 11.9 M4  
12.5 14.9 M6

1.0



A 986 + 1277 15M29

273

646

3972

23316

23316

23 33 20 -60 25.5

~~Noch~~

(7)

12.6 14.1 m

(5)

12.11 +0.562 85.170

3983

23334-43 45 23 35 08 -43 35.5

(+)

(2) 143 -

+0.631

1373 + 10224 85.170

✓ 2451 23 34 50 +04 55

11.6 12.9 h. m.

3481

11.52 +129+1107  
84



1115 +0.6 10 20 4 79