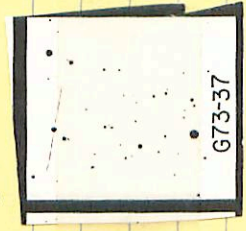


73-37

✓ 02 14 15 + 07 24

113 124 h



10.83 TD.856 2/14/79

✓ 159-46 02 11 50-60 05.5

12.9 14.7 m

546 006 543
054-

104



12.05 12.22 12.24
12.22 12.24

✓ 12.21
12.21

3535

2

13 55

+17 20

136 15.5

mt

(+)



12.95

+1.321 105.780

G35-35

F

02134-1254 02 14 45 -12 46.5 ✓

11.9 13.8 am

1373

①

1373
1373

11.8 + 1.08 = 12.88

1.01

13

2 15 23 -31 05

70469°
LP

LFT 199/200

2 14.3 -31 12 134 m

12.9 m

-310909

0.5

105113120

10.4 12.3 m

11.7 13.4 m

10.64

+1.155 26 Nov 75

10.59

+1.155 17 Jan 76

10.62

+1.155

6.47

7.99

11.61

+1.265 26 Nov 75

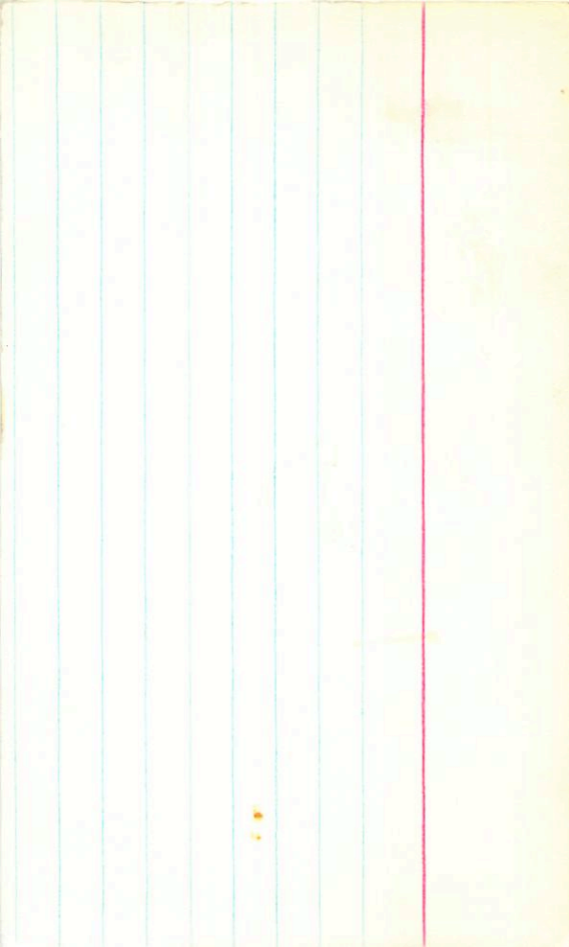
11.55

+1.25 17 Jan 76

11.58

+1.26

10.39



02/33-2550 ✓ 02 14 35 -25 41.5

13.3 15.0 m

S

oa

15 ← in

13.30

→ 6
→

13.31

13.28

+0.585

13.30 +0.573

22

+0.561

14.5

10/10

2/10

an

12-45 +0.6101-

02171 -6711 2 17 50 -67 03 14.5 16.0 m

1389

(X)

.

13.15 +0.557 10 Sept 80

02158-3551 62 17 00 -35 43 (11.3 12.6 h-m
130/1 } 12.3 14.1 min
41" 70

✓

⊗

7.1.15
10.60 + 0.815 1 Jun 79
1043 + 0.80622 - 0.001
1062 + 0.810

1067 + 0.99822 - 0.001
11.63 + 999 1 Jun 79
1165 + 0.998

LFT 203

LTT 1171

-540487

π 064

Ⓟ

1379
2

↑ 475.1

11.49 + 1.39 + 0.99 + 0.70

11.44 + 1.39 + 1.02 + 30 cent

11.46 + 1.39 + 1.005

16.45 - 54

10.46

10.53

10.50

10.50

+ 0.758 cent

+ 0.782 + 0.70

70.765

+ 0.760 + 220 cent

0.615, 0.615, 0.615
~~0.615~~ + 2.5 am

82

f. 47 4.87

G 2 24 40 -01 20 13.2 14.5^m

[1404] ⊕

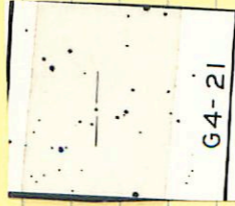
12.27 +1052 10520

4-21 (7)

02 23 40

+13 23

140 149 9-6



1369 +0.506 105.780

0216\$ -39 51

2 17 50

-39 42.5

12.7

130⁰⁰ 15.7

(+)

1385/4

96200K

12.09 +1045 1052.080

A 2 27 50 -20 06

A .676 70
B .675 65

-20° 46.5 (2 26 40 -20 12.4 8.4 9.7 11.2

507.49 1546 26 11 -20 16.0 12.2 12.5 h.m

620
+542
+602

5544 5544 644

+650 +033
8941 9497
4376 3182

8.13 +0.485 23 Aug 77
8.13 +0.475 17 Sep 76
8.15 +0.475 14 Aug 77
8.14 +0.48 ③

11.61 +1.07 23 Aug 77
11.56 +1.05 17 Sep 76
11.65 +1.07 14 Aug 77
11.62 +1.065 ③

697
009
40.5
0766
0.44 +2.44

①

664
X

02 278-3055

2

29

20

130

49

14.2.186

h.m

1411

AN

+

1330

~~12.50~~

10.516 1054780

02278-3055 02 29 05 -30 47

142 15.6 h.m.

✓

(1411)

(+)

$$\begin{array}{r} \rightarrow 13.32 + 0.504 \text{ Jan 11} \\ 13.30 + 0.516 \text{ 11 Sep 10} \\ \hline 13.31 + 0.510 \end{array}$$

? No 12.18 + 0.245 7 Dec 08

62376-8151 02 36 15 -81 43.5 13.0 14.5 m-

• (A)

Hand of © . Arc S f and down

front of good level
front of good level

13.56 +0.598 226071
13.76 +0.616 1054780
13.76 +0.607②

(1923)

~~1923~~
9.64 +0.786 74275

36-24

2

32

25

+24

50.5

12.5

MY MB

(4)



11.44 +1.325 10 Sept 80