

# AAVSO

49 Bay State Rd, Cambridge, MA 02138 USA

**48 Sky Charts of Variable Stars for Binoculars and Small Telescopes**

João Marcos Almeida (AJC)

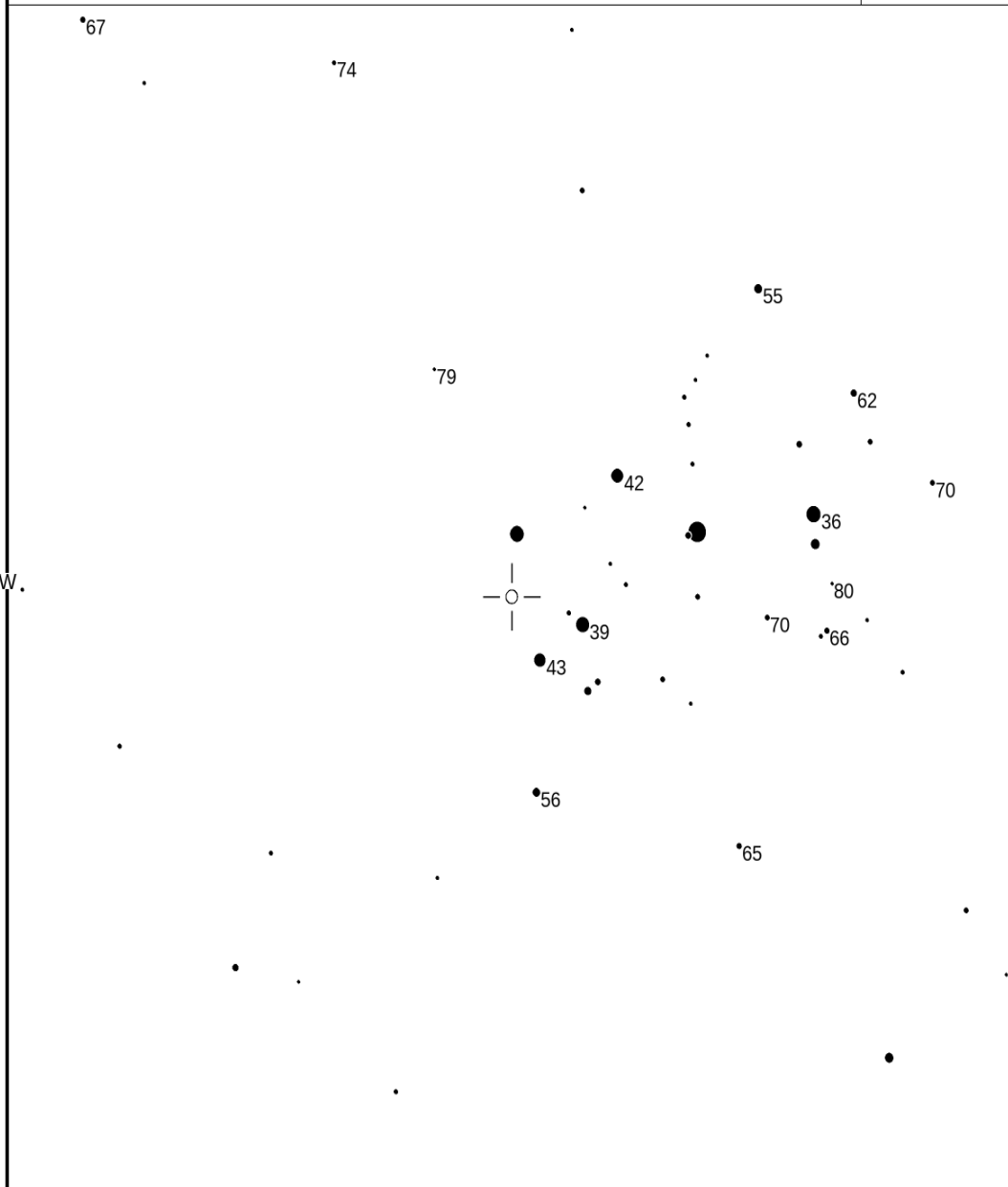
Brazil, 2021

NSV 1262

Magn: 5.46 (0.014)Kp V  
Period: 16.20539  
Type: VAR  
Spec: B7IV

NSV 1262  
(2000) 03:44:48.21 +24:17:22.1

AAVSO  
Chart  
13169CFG



FOV = 3.3°

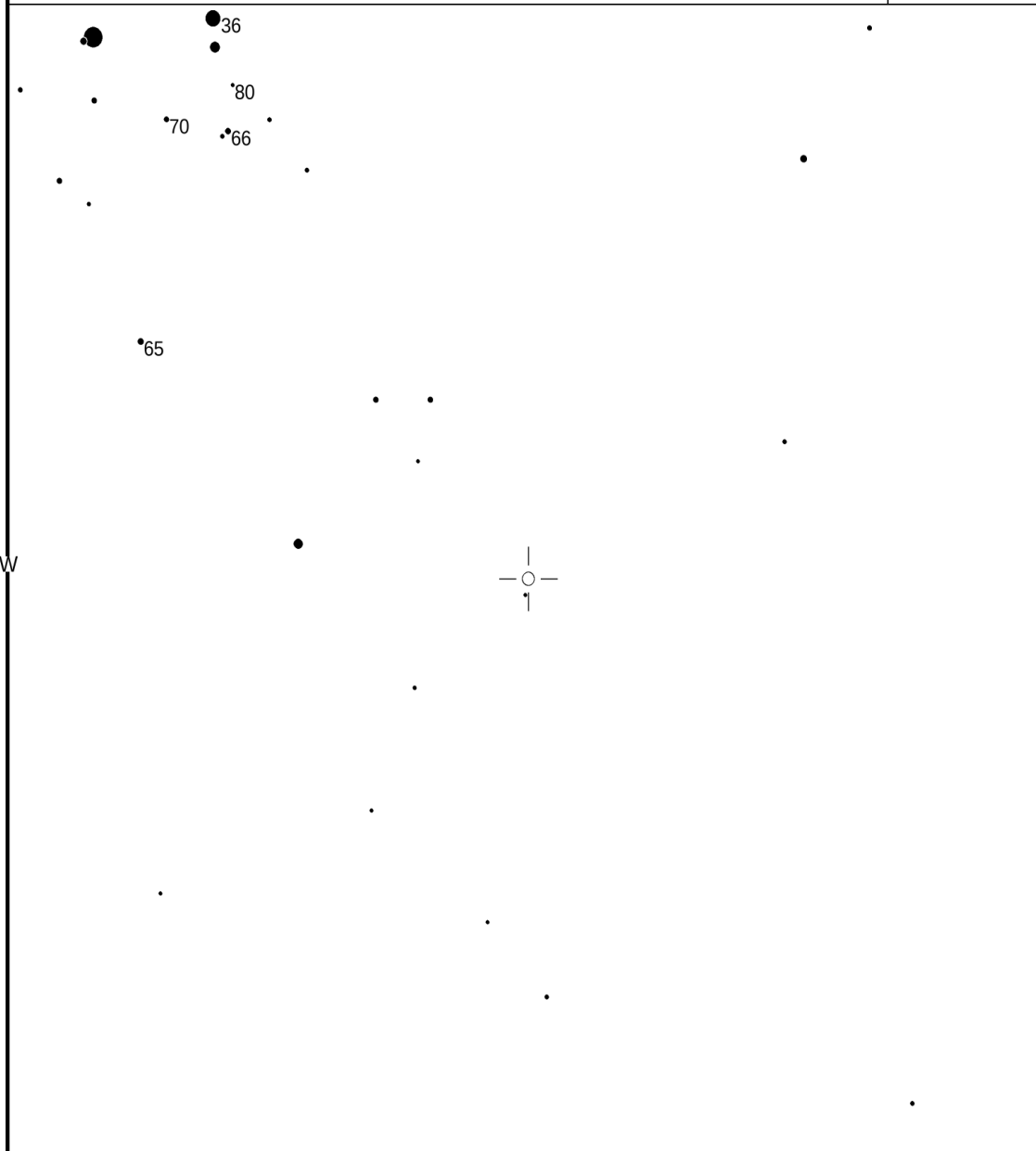
Please use the photometry table for CCD observations.

NSV 1391

Magn: 6.35 (0.016)Kp V  
Period: 19.08056  
Type: VAR  
Spec: A2V

NSV 1391  
(2000) 03:53:34.48 +25:40:58.4

AAVSO  
Chart  
13169CFP



FOV = 3.3°

Please use the photometry table for CCD observations.

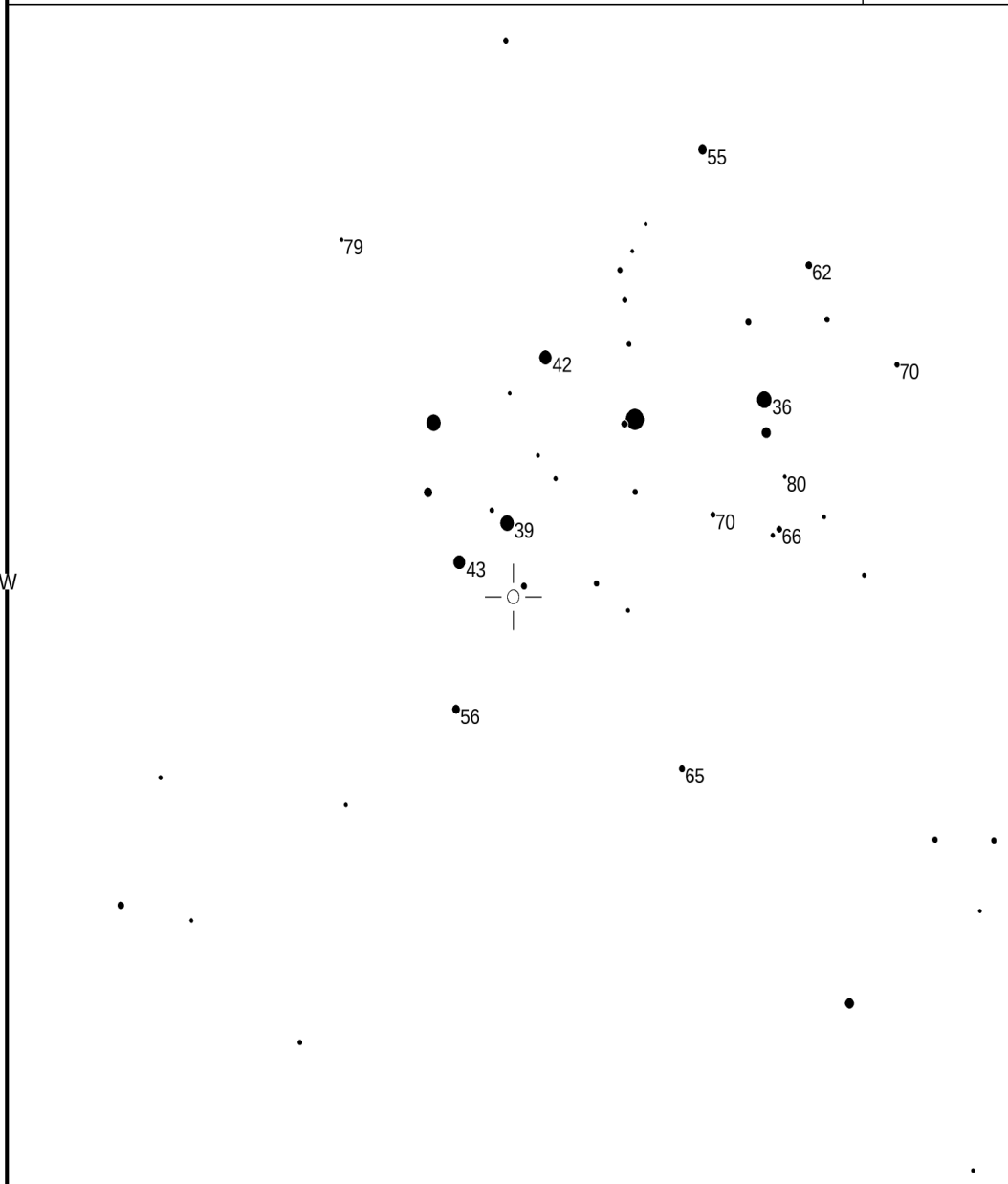
NSV 1283

Magn: 5.76 (0.003)Kp V  
Period: 12.85862  
Type: VAR  
Spec: B8V

NSV 1283  
(2000) 03:45:54.48 +24:33:16.2

AAVSO  
Chart

13169CFS



FOV = 3.0°

Please use the photometry table for CCD observations.

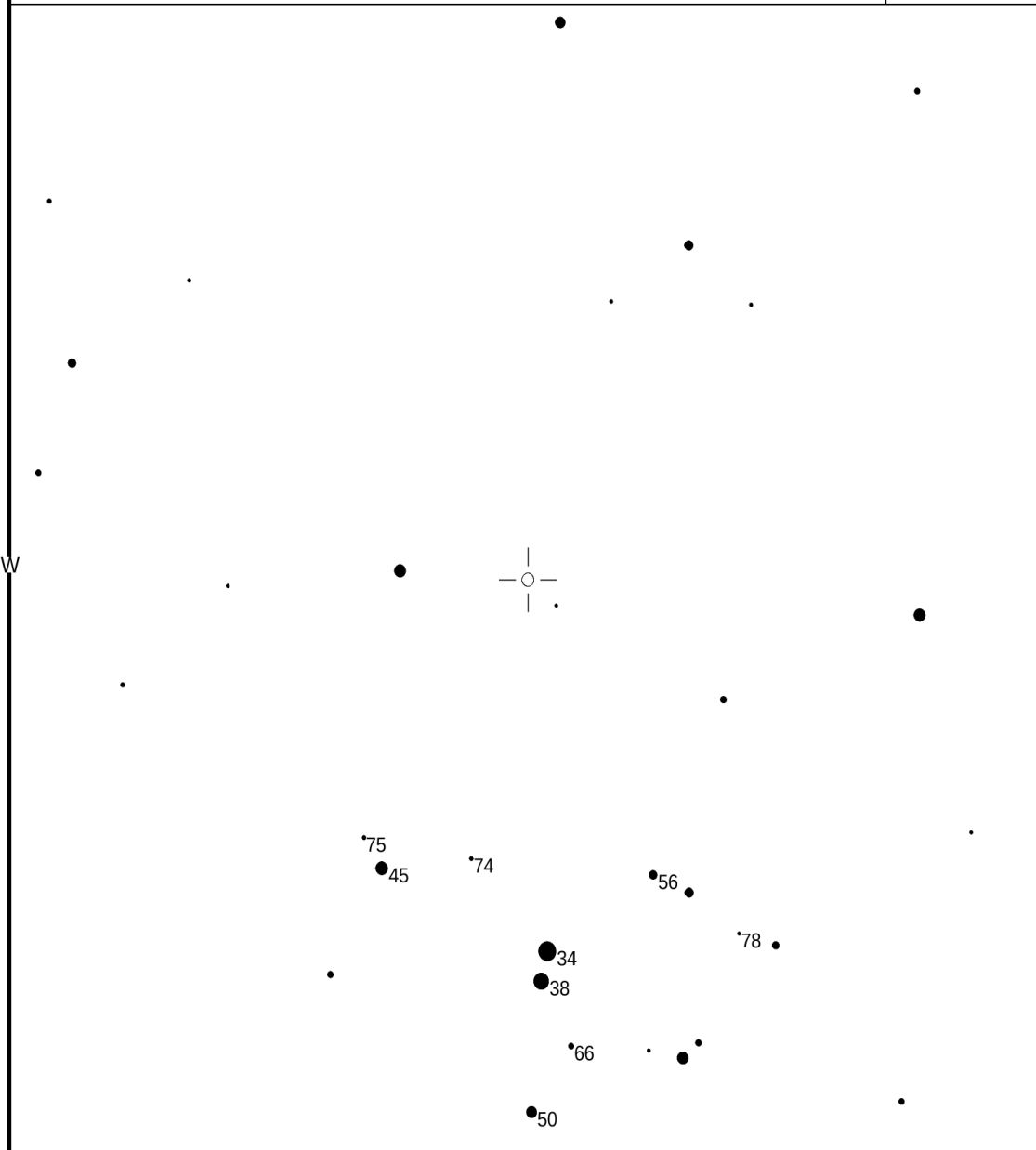
NSV 16013

Magn: 5.9 - ? V  
Period:  
Type:  
Spec: F0IV

NSV 16013  
(2000) 04:28:23.40 +14:44:28.0

AAVSO  
Chart

13169CGG



FOV = 3.5°

Please use the photometry table for CCD observations.

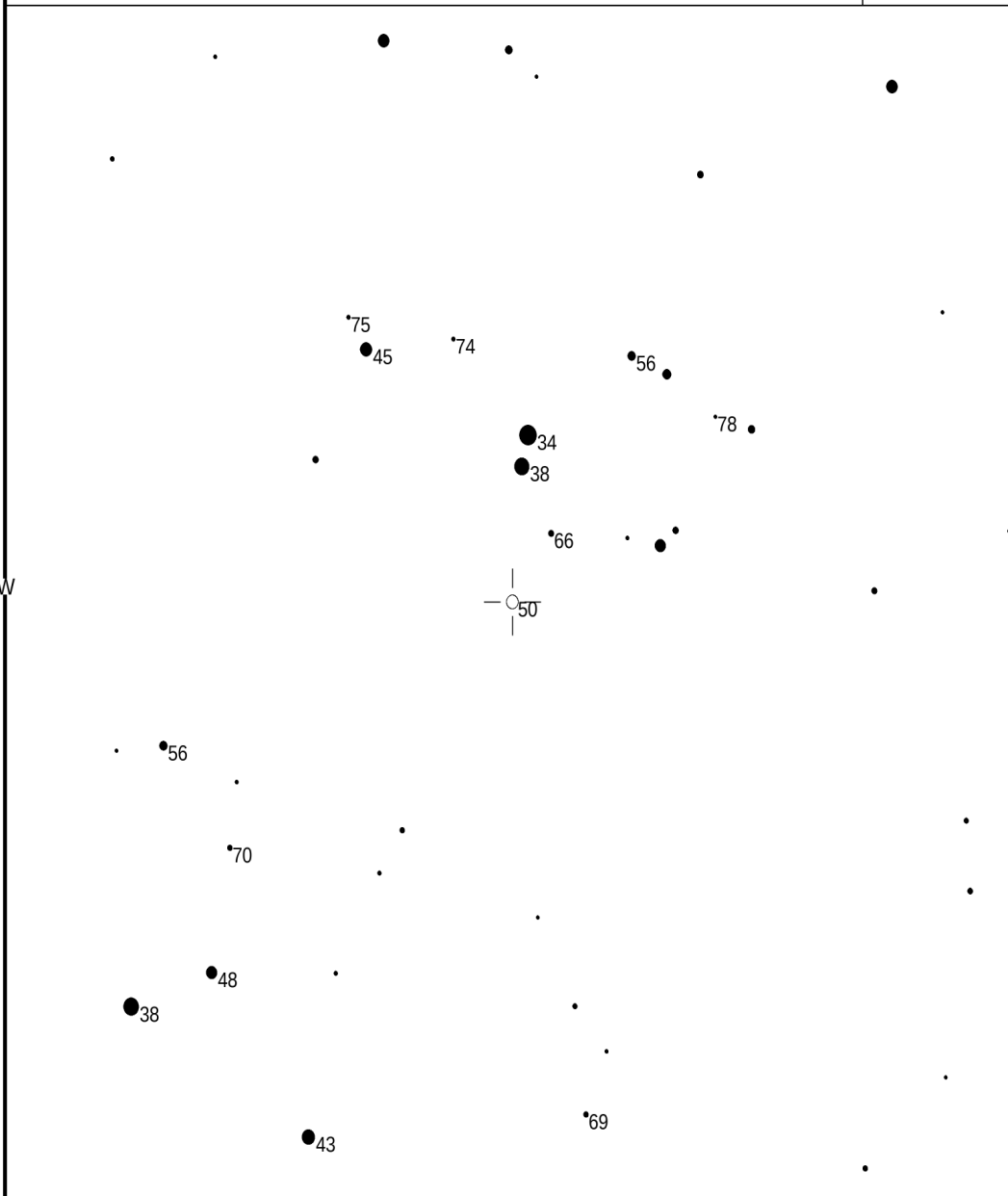
NSV 1609

Magn: 4.97 V  
Period:  
Type:  
Spec: K2III+F2V

NSV 1609  
(2000) 04:28:26.37 +16:21:34.8

AAVSO  
Chart

13169CGF



FOV = 3.5°

Please use the photometry table for CCD observations.

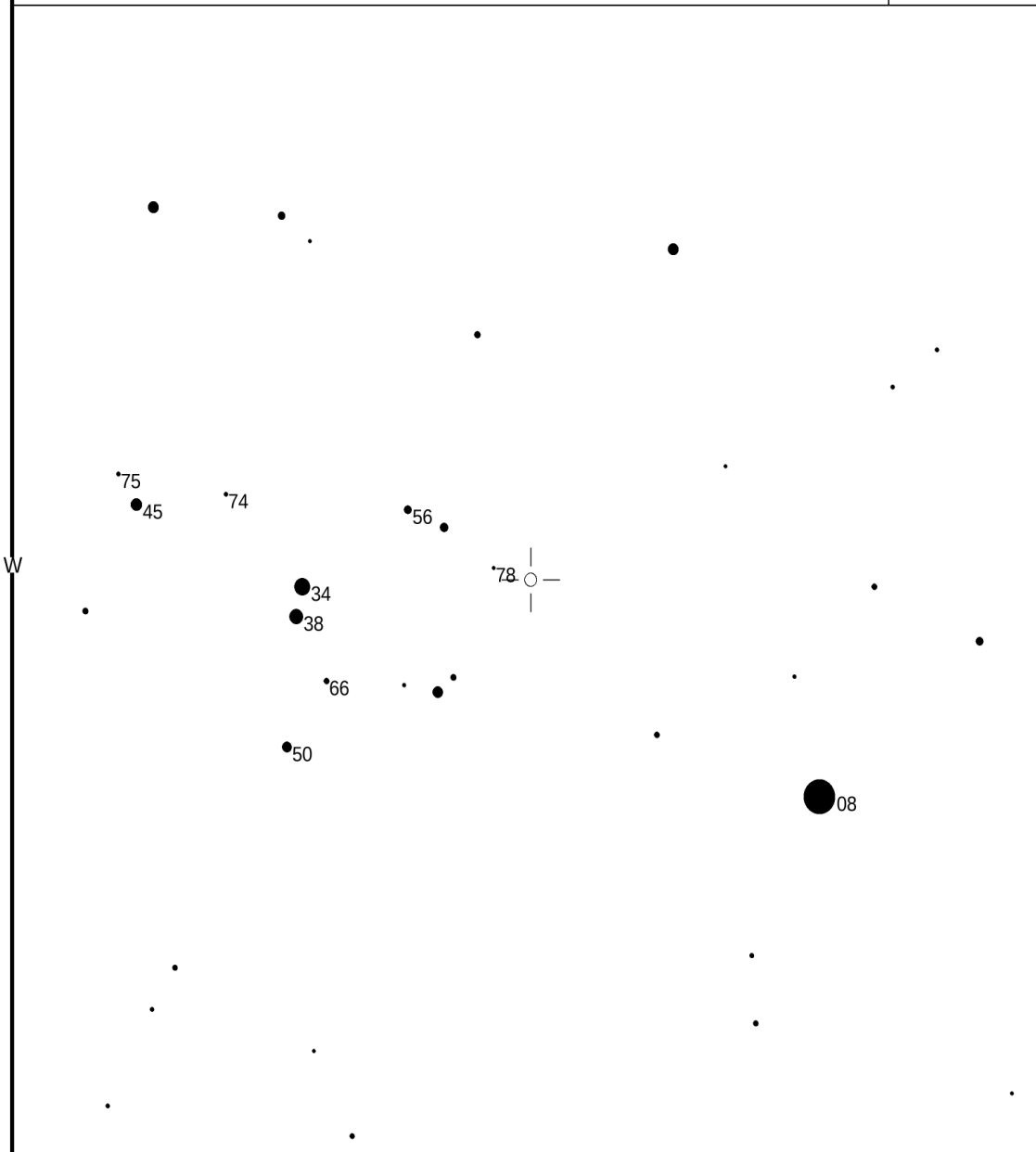
NSV 1640

Magn: 6.00 V  
Period:  
Type:  
Spec: F2V

NSV 1640  
(2000) 04:31:51.76 +15:51:05.6

AAVSO  
Chart

13169CGK



FOV = 3.5°

Please use the photometry table for CCD observations.

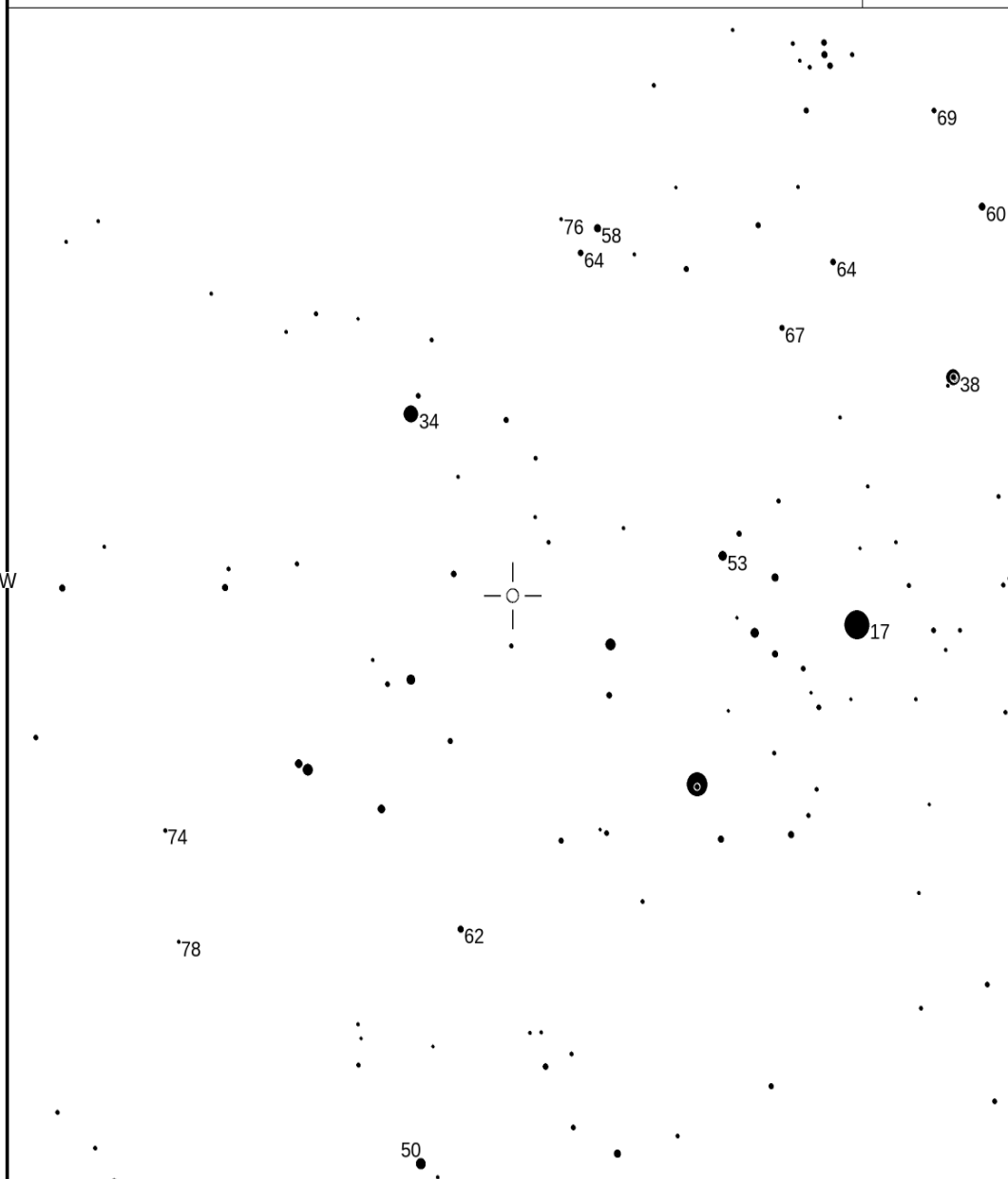
NSV 1994

Magn: 7.21 V  
Period:  
Type:  
Spec: B3III

NSV 1994  
(2000) 05:27:09.38 -01:22:02.5

AAVSO  
Chart

X27341EV



FOV = 6.7°

Please use the photometry table for CCD observations.

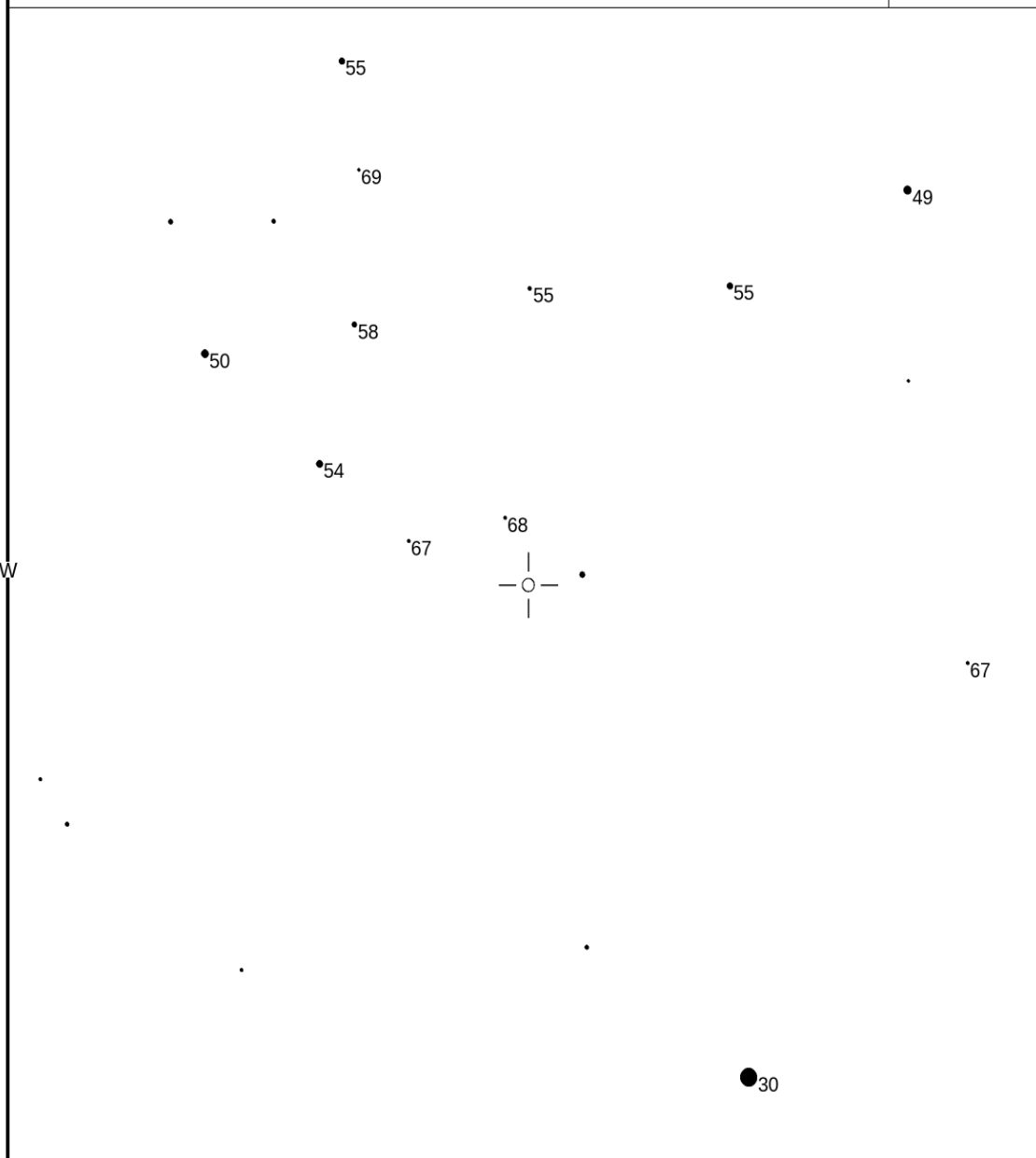
CE Tau

Magn: 4.22 - 4.63 V  
Period:  
Type: SRC  
Spec: M2Iab-Ib

CE TAU  
(2000) 05:32:12.75 +18:35:39.3

AAVSO  
Chart

X27356AB



FOV = 6.0°

Please use the photometry table for CCD observations.

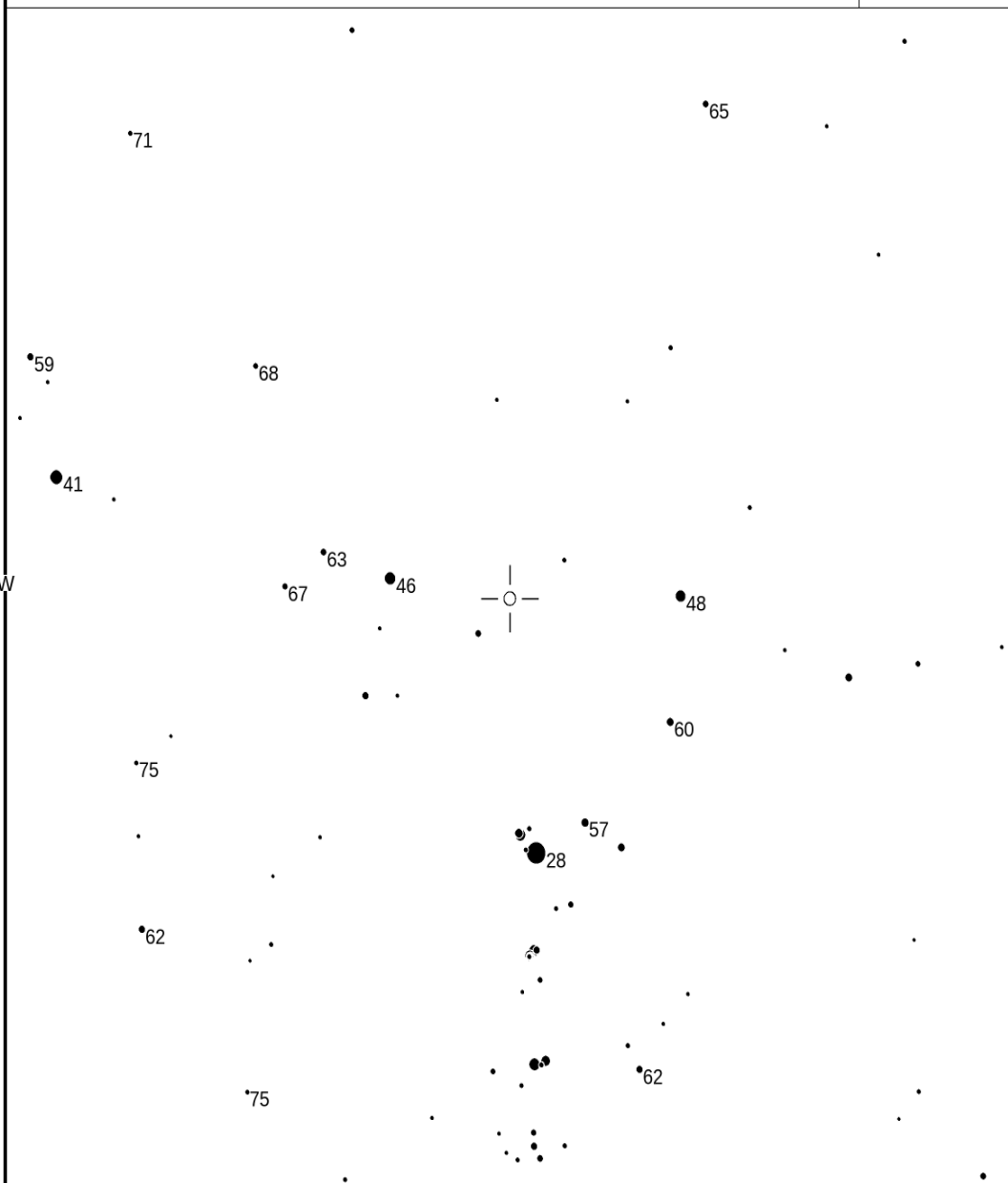


NSV 2239

Magn: 6.90 V  
Period:  
Type:  
Spec: K4

NSV 2239  
(2000) 05:34:48.01 -07:12:01.4

AAVSO  
Chart  
X27356AG



FOV = 6.0°

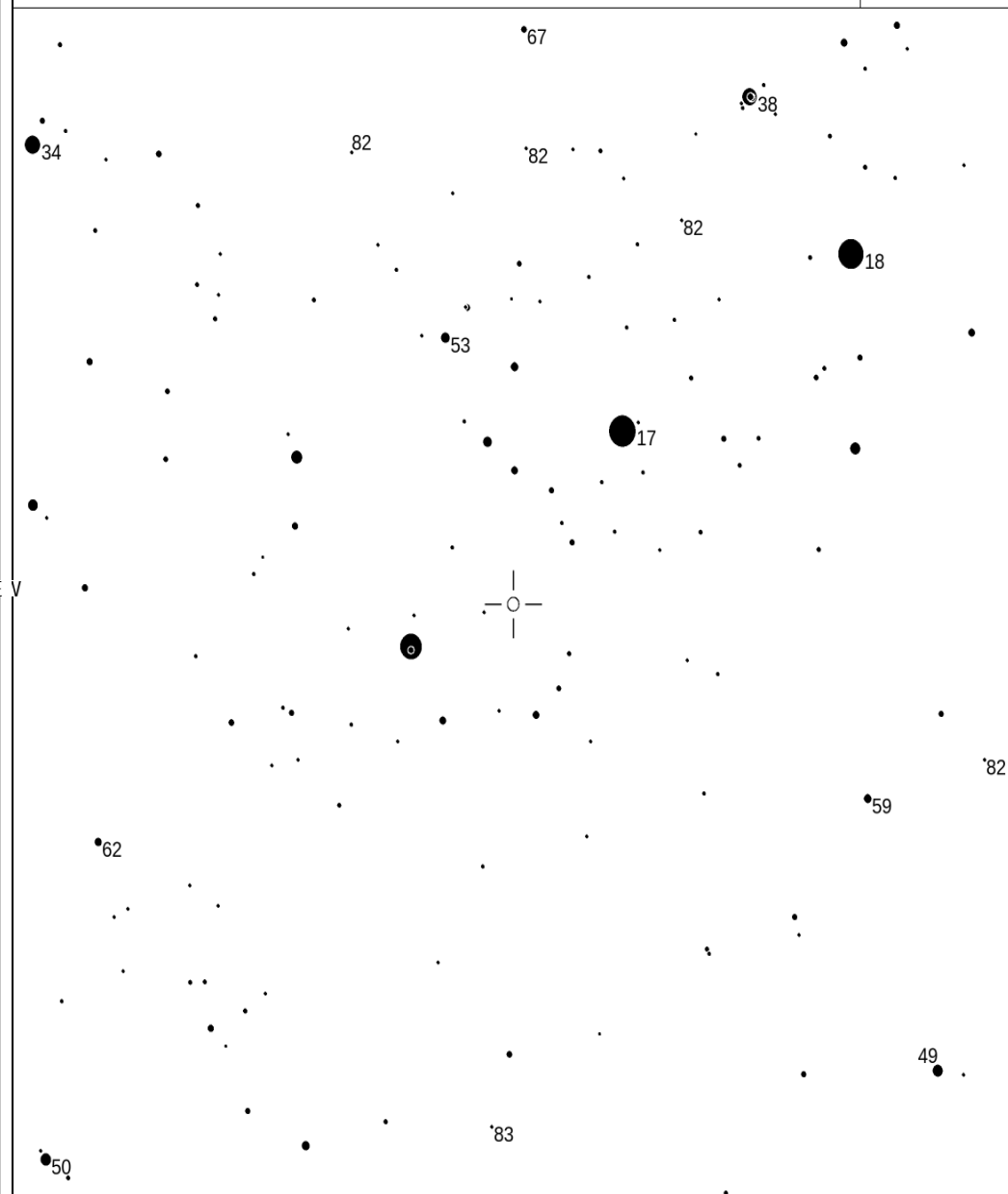
Please use the photometry table for CCD observations.

NSV 16347

Magn: 5.6 - 7.7 \*  
Period:  
Type: VAR:  
Spec: B7V

NSV 16347  
(2000) 05:34:02.30 -00:28:35.0

AAVSO  
Chart  
X27341FA



FOV = 5.0°

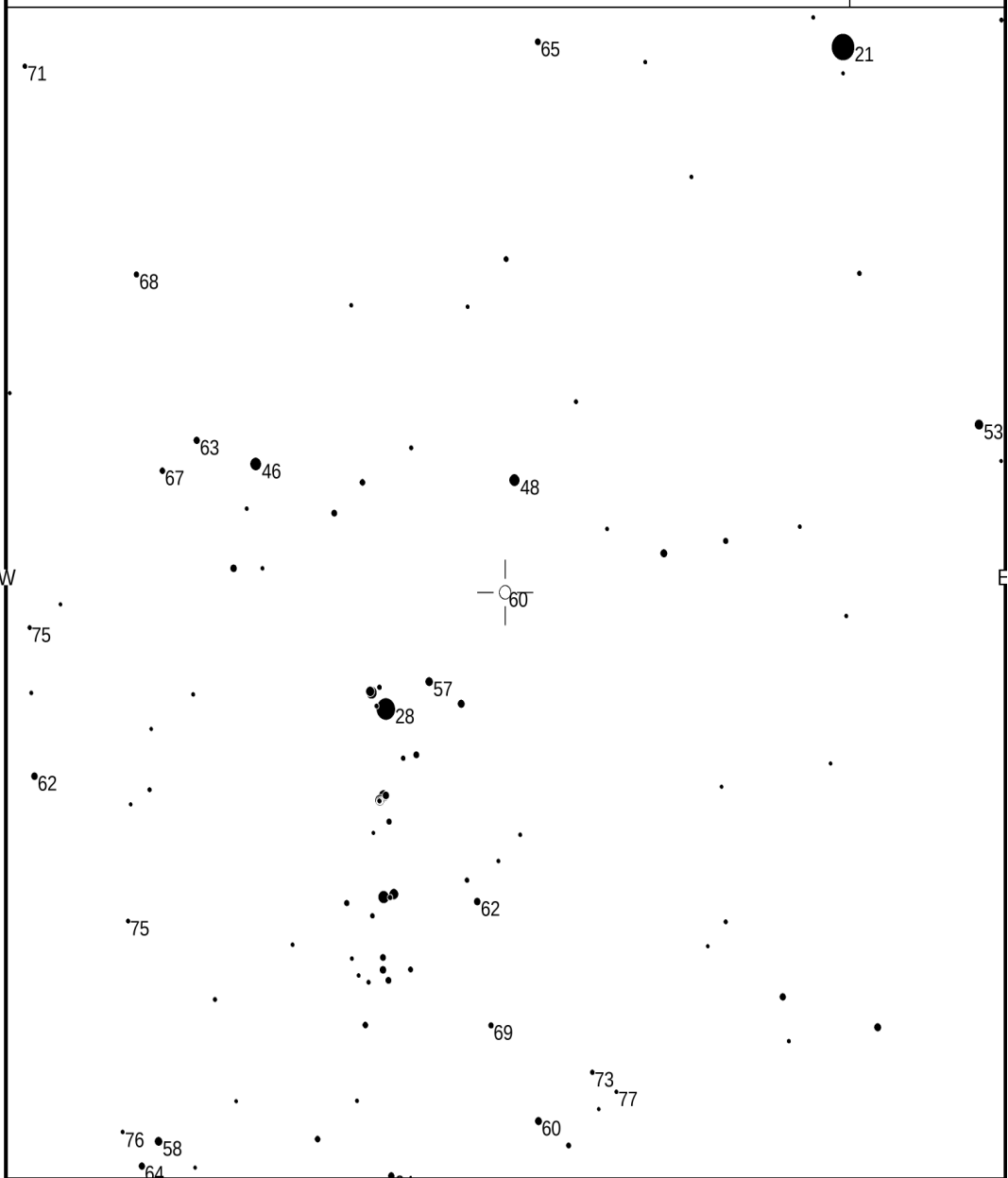
Please use the photometry table for CCD observations.

NSV 16607

Magn: 5.96 - ? V  
Period:  
Type: VAR:  
Spec: B1.5IV

NSV 16607  
(2000) 05:38:38.00 -06:34:27.0

AAVSO  
Chart  
13169CWE



FOV = 6.7°

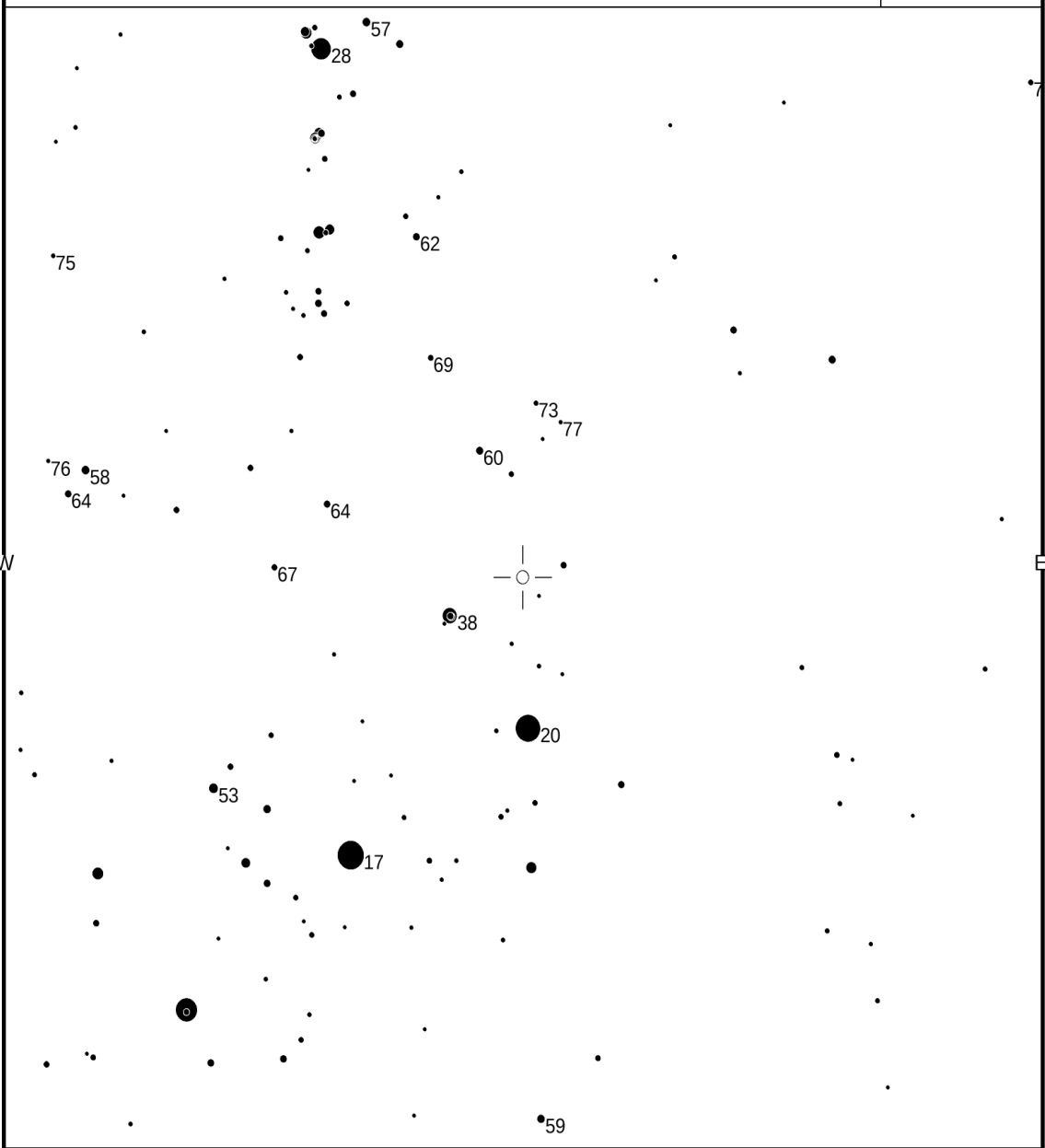
Please use the photometry table for CCD observations.

NSV 16627

Magn: 6.3 - 7 M  
Period:  
Type:  
Spec: B1.5V

NSV 16627  
(2000) 05:40:37.30 -02:49:31.0

AAVSO  
Chart  
13169CWG



FOV = 6.7°

Please use the photometry table for CCD observations.



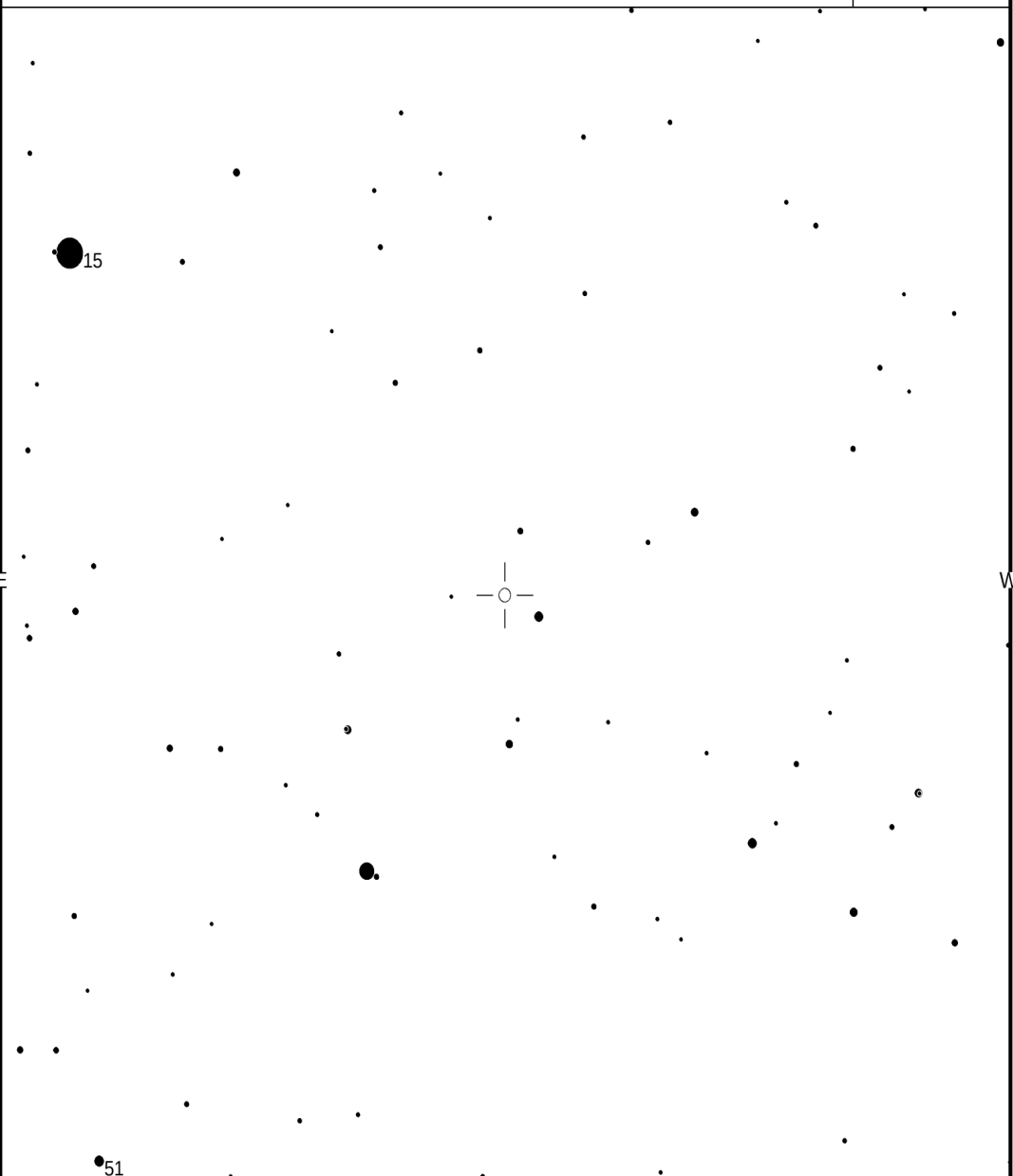
HP CMa

Magn: 5.33 - 5.81 V  
Period: 0.79187  
Type: GCAS+LERI  
Spec: B2IIIe

HP CMA  
(2000) 06:45:31.19 -30:56:56.3

AAVSO  
Chart

13169CWK



FOV = 6.7°

Please use the photometry table for CCD observations.

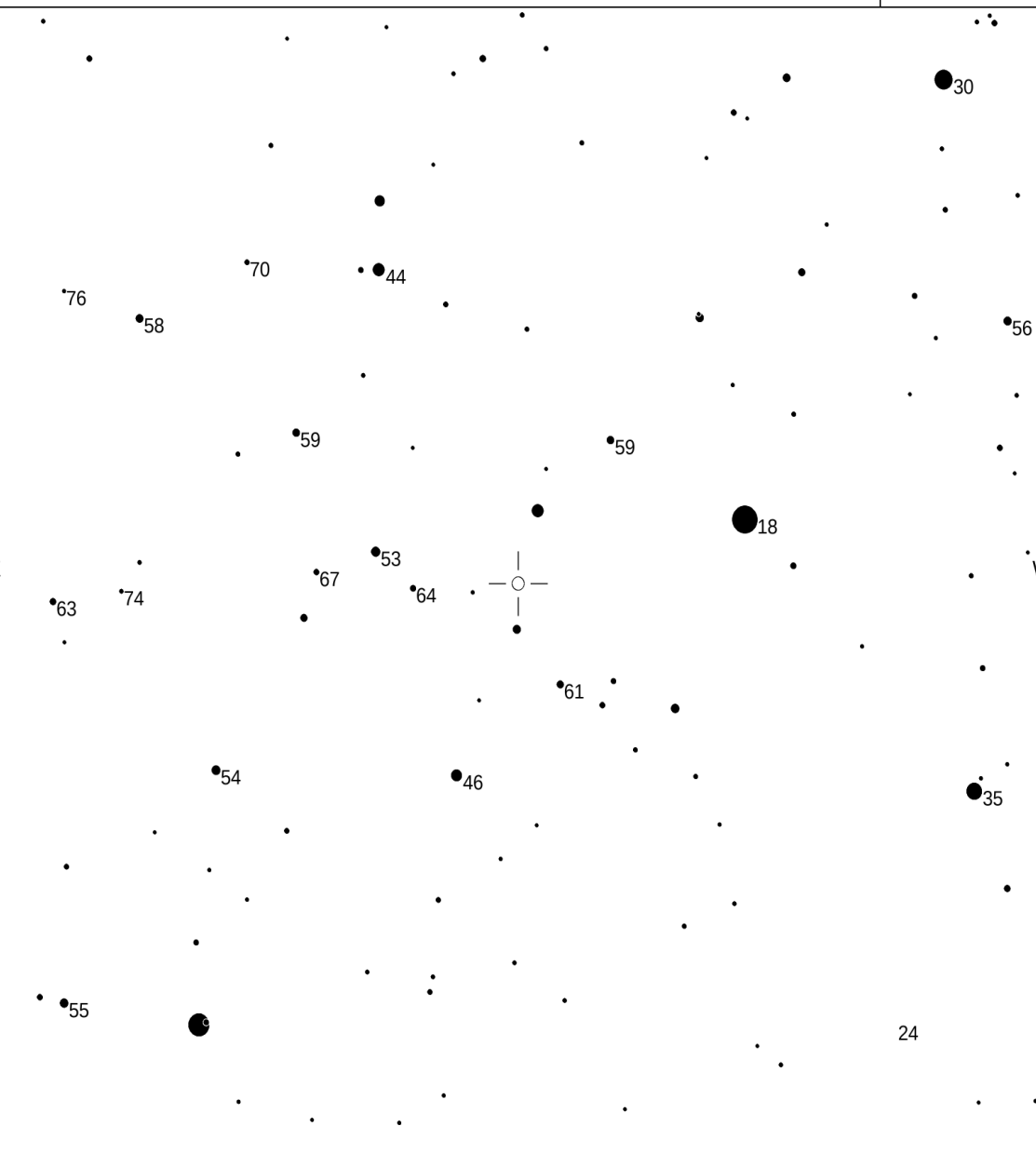
ome CMA

Magn: 3.54 - 4.18 V  
Period:  
Type: GCAS  
Spec: B2IV-Ve

OME CMA  
(2000) 07:14:48.65 -26:46:21.6

AAVSO  
Chart

13169CWH



FOV = 6.7°

Please use the photometry table for CCD observations.

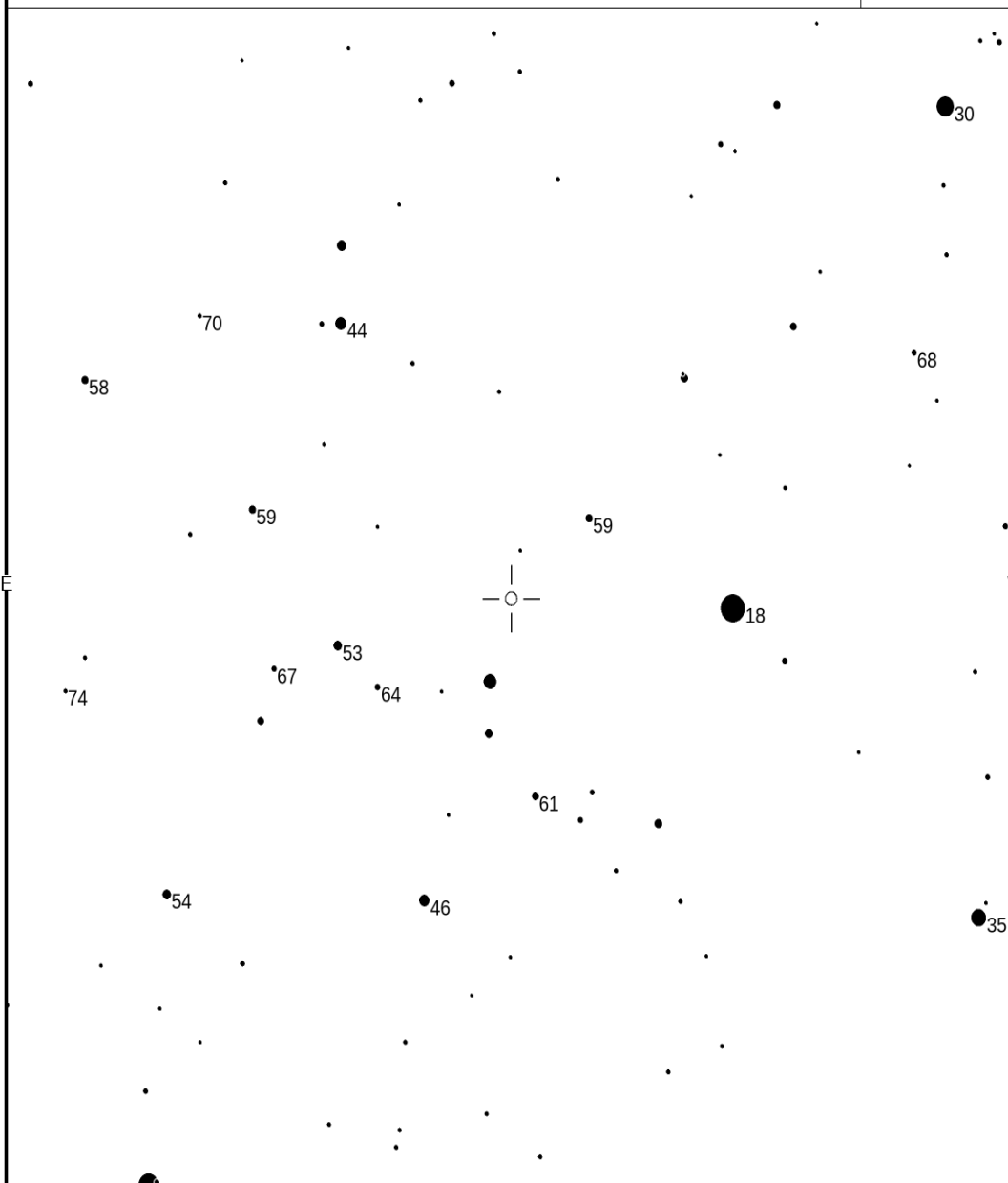
EW CMa

Magn: 4.42 - 4.82 V  
Period:  
Type: GCAS  
Spec: B3Ive

EW CMa  
(2000) 07:14:15.21 -26:21:09.0

AAVSO  
Chart

X27341FO



FOV = 6.0°

Please use the photometry table for CCD observations.

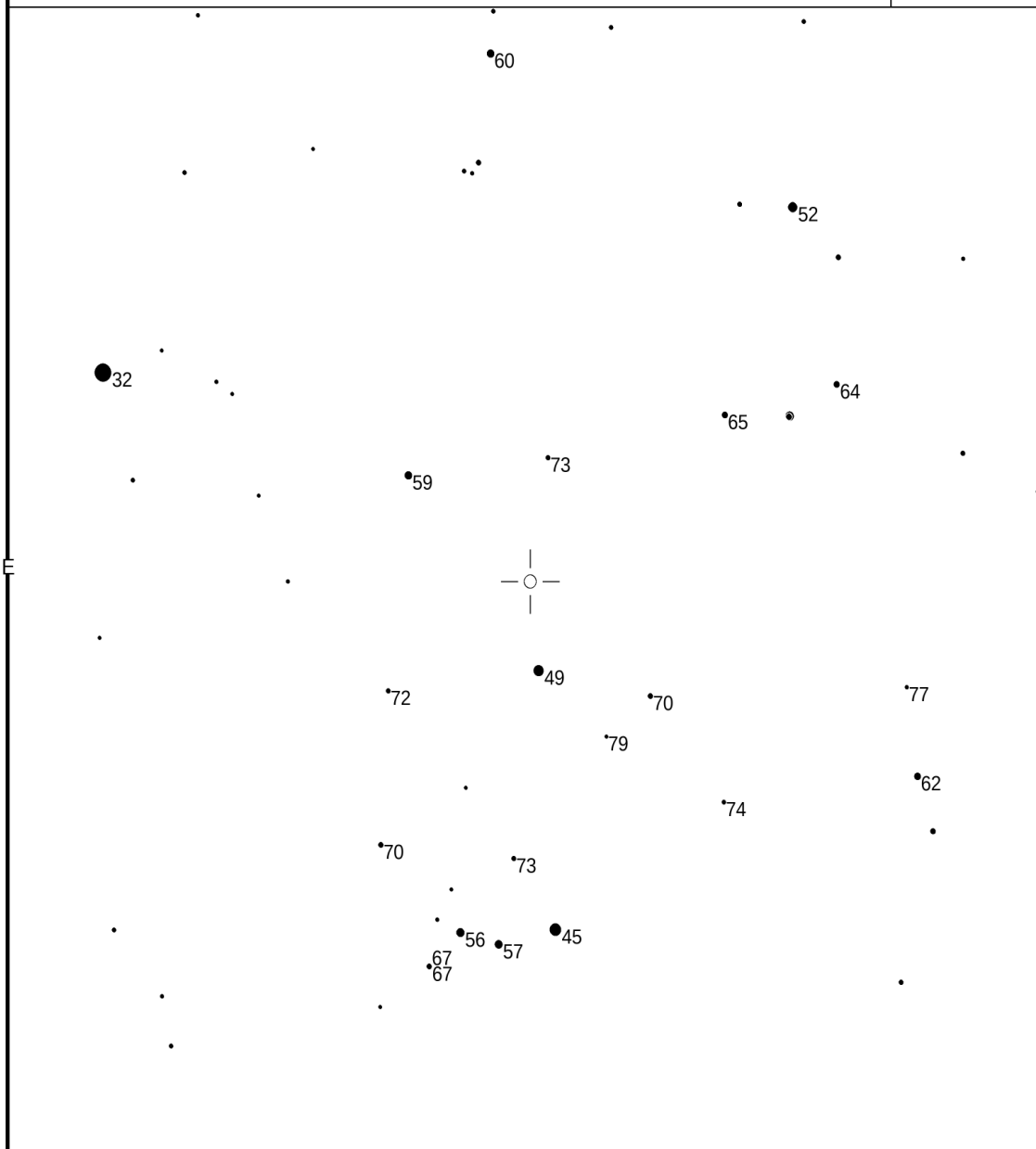
L2 Pup

Magn: 2.6 - 8.0 V  
Period: 140.6  
Type: SRB  
Spec: M5IIIe-M6IIIe

L2 PUP  
(2000) 07:13:32.32 -44:38:23.1

AAVSO  
Chart

13169CWL



FOV = 7.0°

Please use the photometry table for CCD observations.

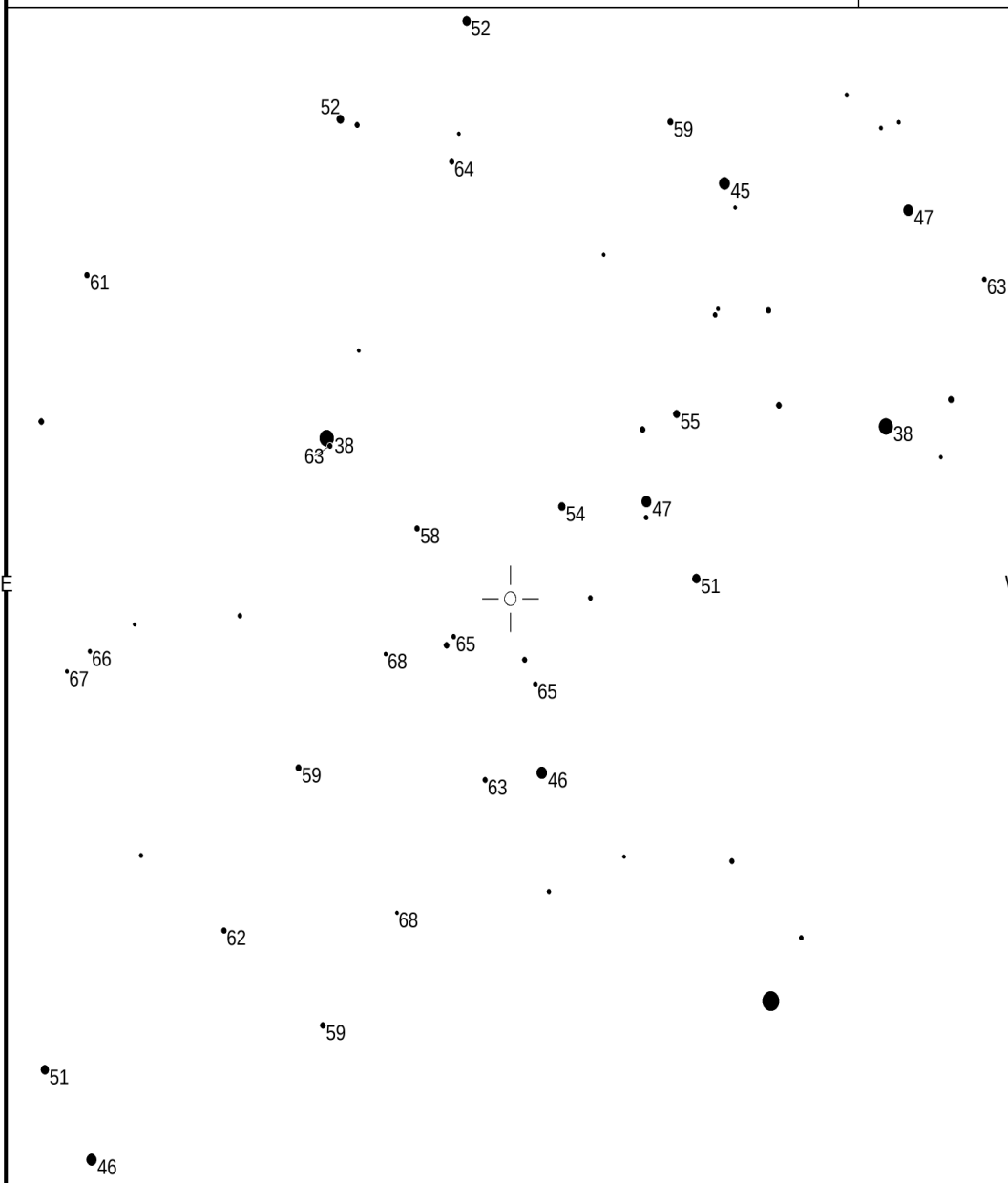


eta Car

Magn: -1.0 - 7.9 V  
Period: 2022.9  
Type: SDOR+HB:  
Spec: pec(e)

ETA CAR  
(2000) 10:45:03.54 -59:41:04.0

AAVSO  
Chart  
13169CWO



FOV = 6.0°

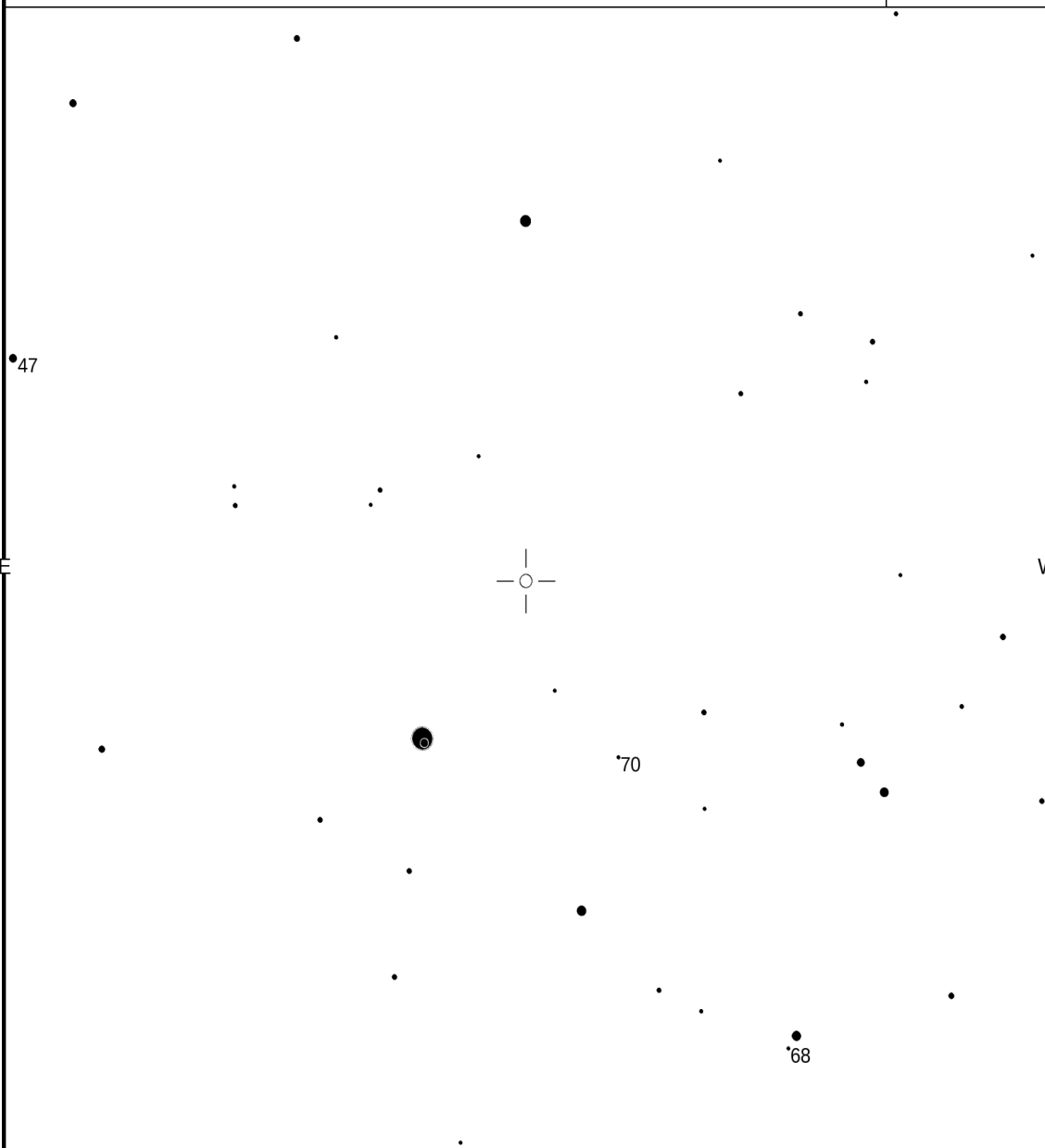
Please use the photometry table for CCD observations.

T Cru

Magn: 6.32 - 6.83 V  
Period: 6.73331  
Type: DCEP  
Spec: F6-G2Ib

T CRU  
(2000) 12:21:21.13 -62:16:53.9

AAVSO  
Chart  
13169CWP



FOV = 6.0°

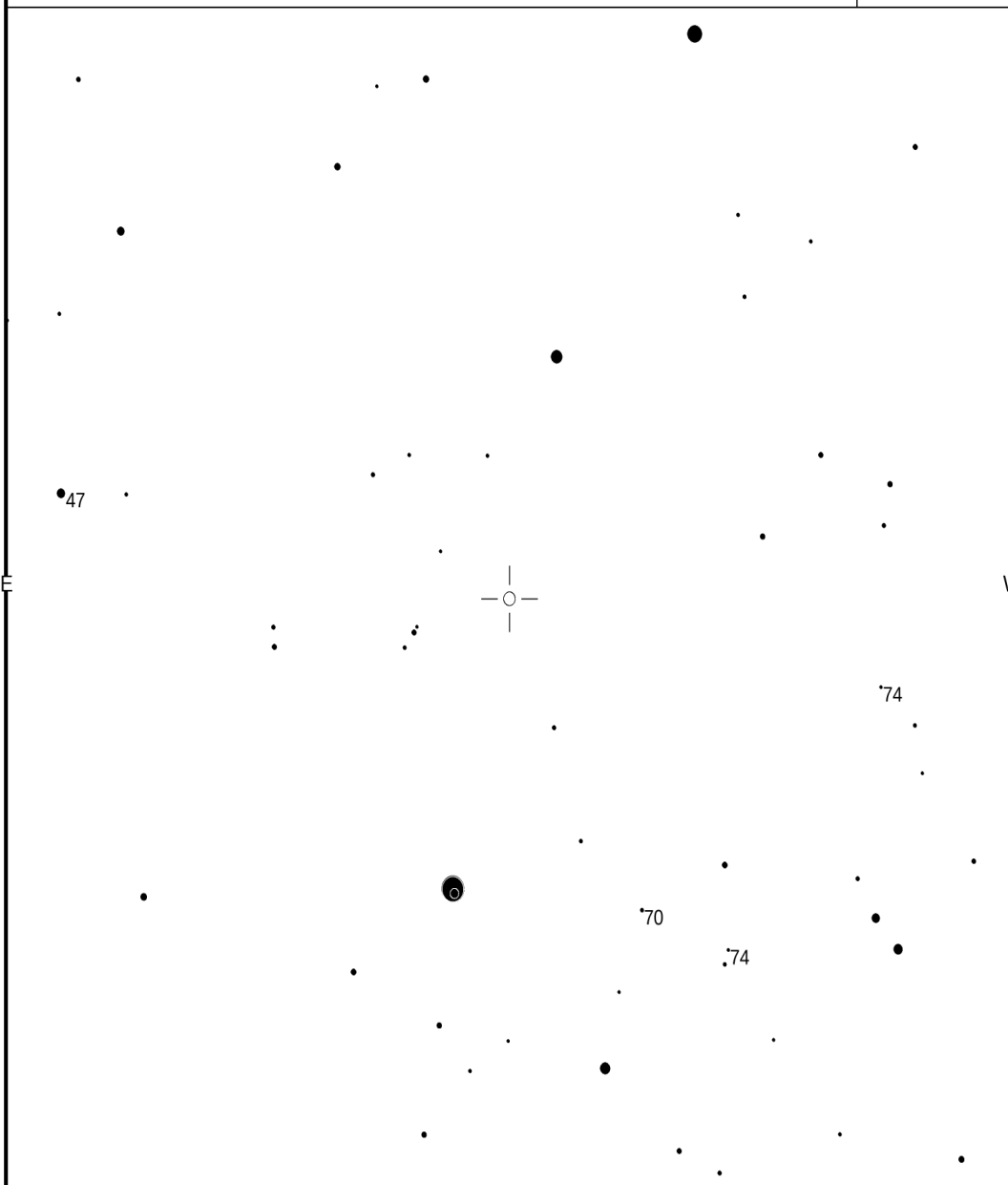
Please use the photometry table for CCD observations.

R Cru

Magn: 6.4 - 7.23 V  
Period: 5.82575  
Type: DCEP  
Spec: F6-G2Ib-II

**R CRU**  
(2000) 12:23:37.69 -61:37:44.8

**AAVSO**  
Chart  
13169CWS



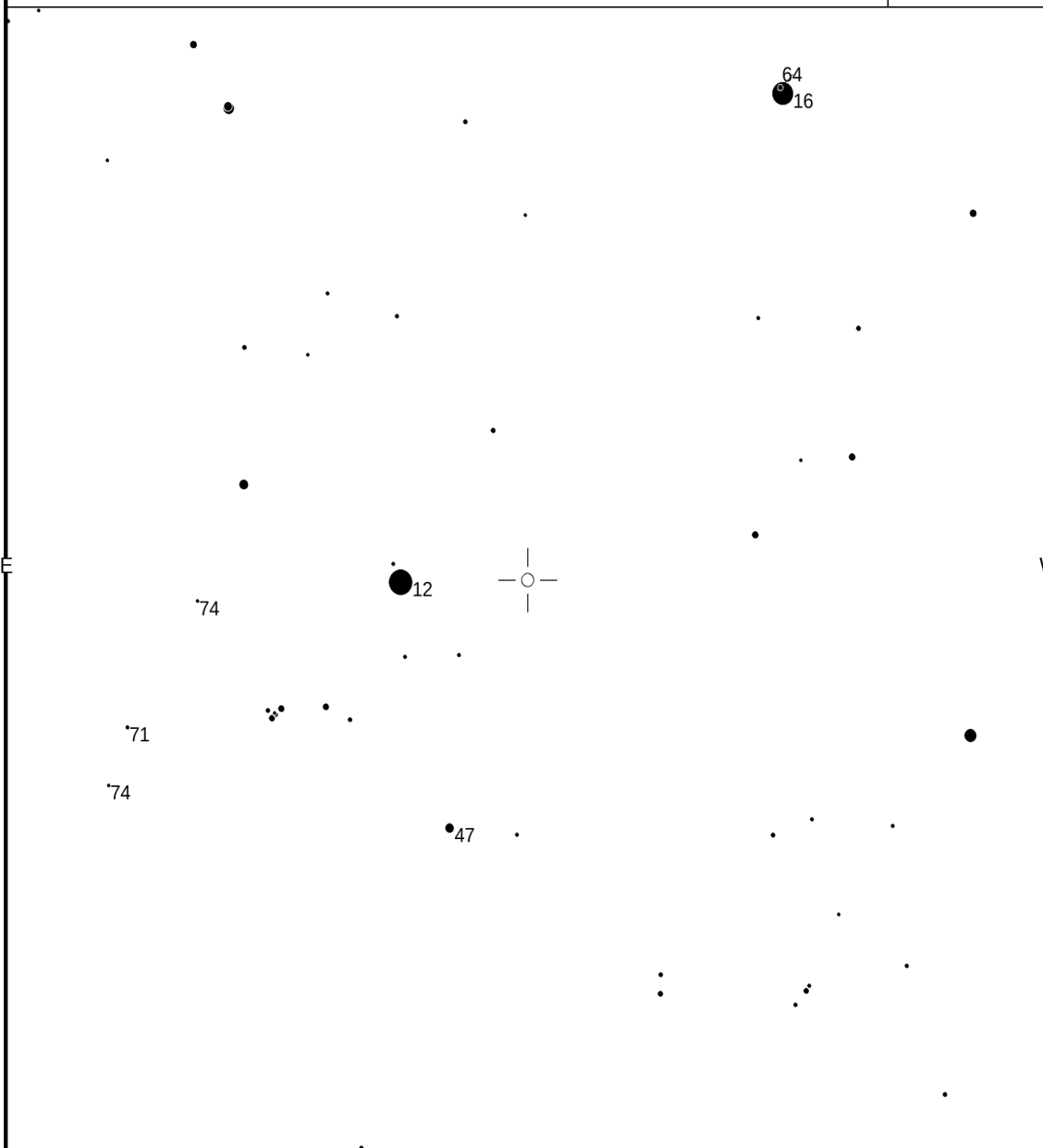
Please use the photometry table for CCD observations.  
<https://www.aavso.org/vsp/> Copyright © 2021 AAVSO

CH Cru

Magn: 4.88 - 5.7 B  
Period:  
Type: GCAS:  
Spec: B6IVe

**CH CRU**  
(2000) 12:41:56.57 -59:41:08.9

**AAVSO**  
Chart  
13169CWT



Please use the photometry table for CCD observations.  
<https://www.aavso.org/vsp/> Copyright © 2021 AAVSO

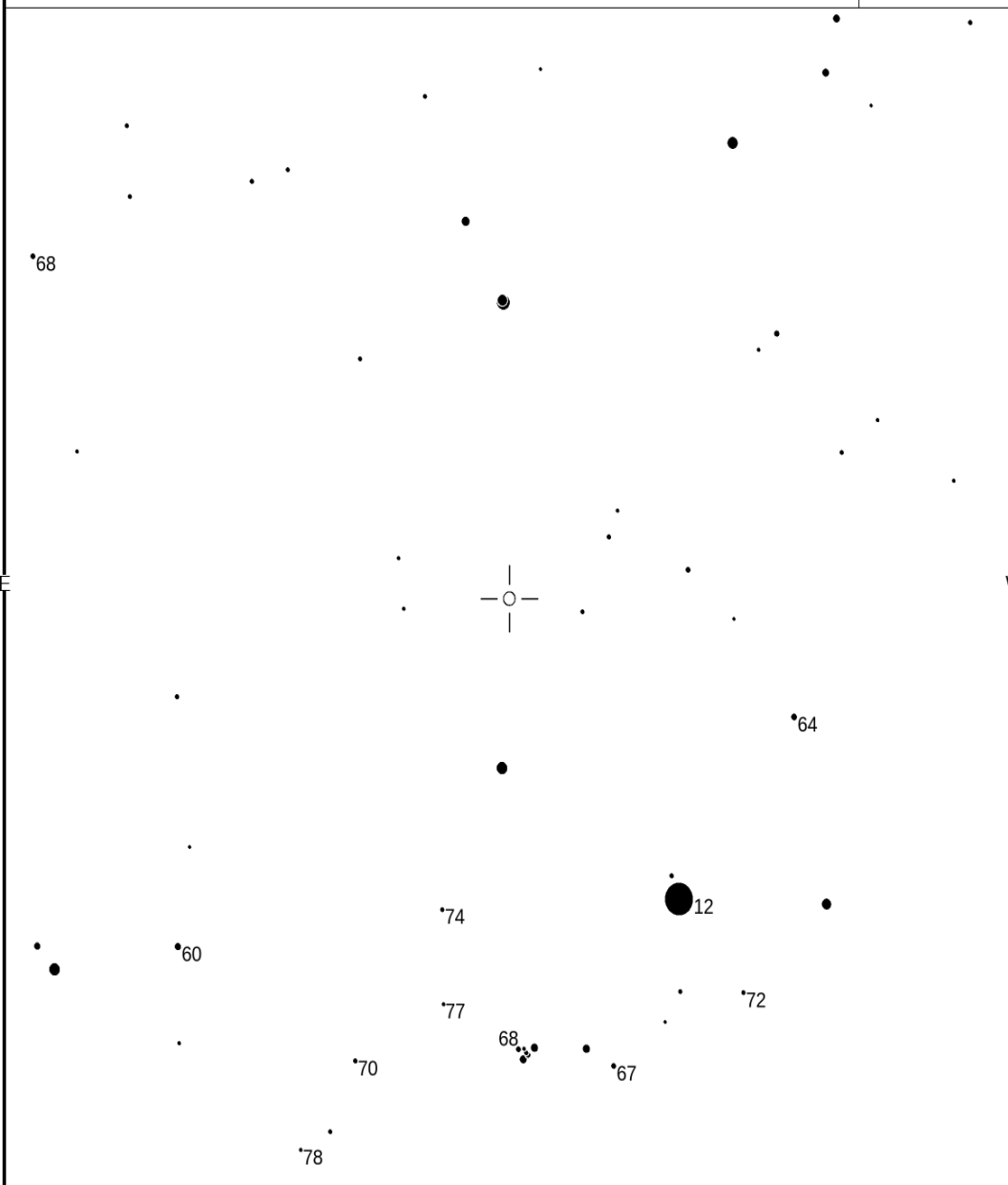
S Cru

Magn: 6.22 - 6.92 V  
Period: 4.68997  
Type: DCEP  
Spec: F6-G1Ib-II

S CRU  
(2000) 12:54:22.00 -58:25:50.2

AAVSO Chart

Chart  
X27358L



FOV = 5.0°

Please use the photometry table for CCD observations.

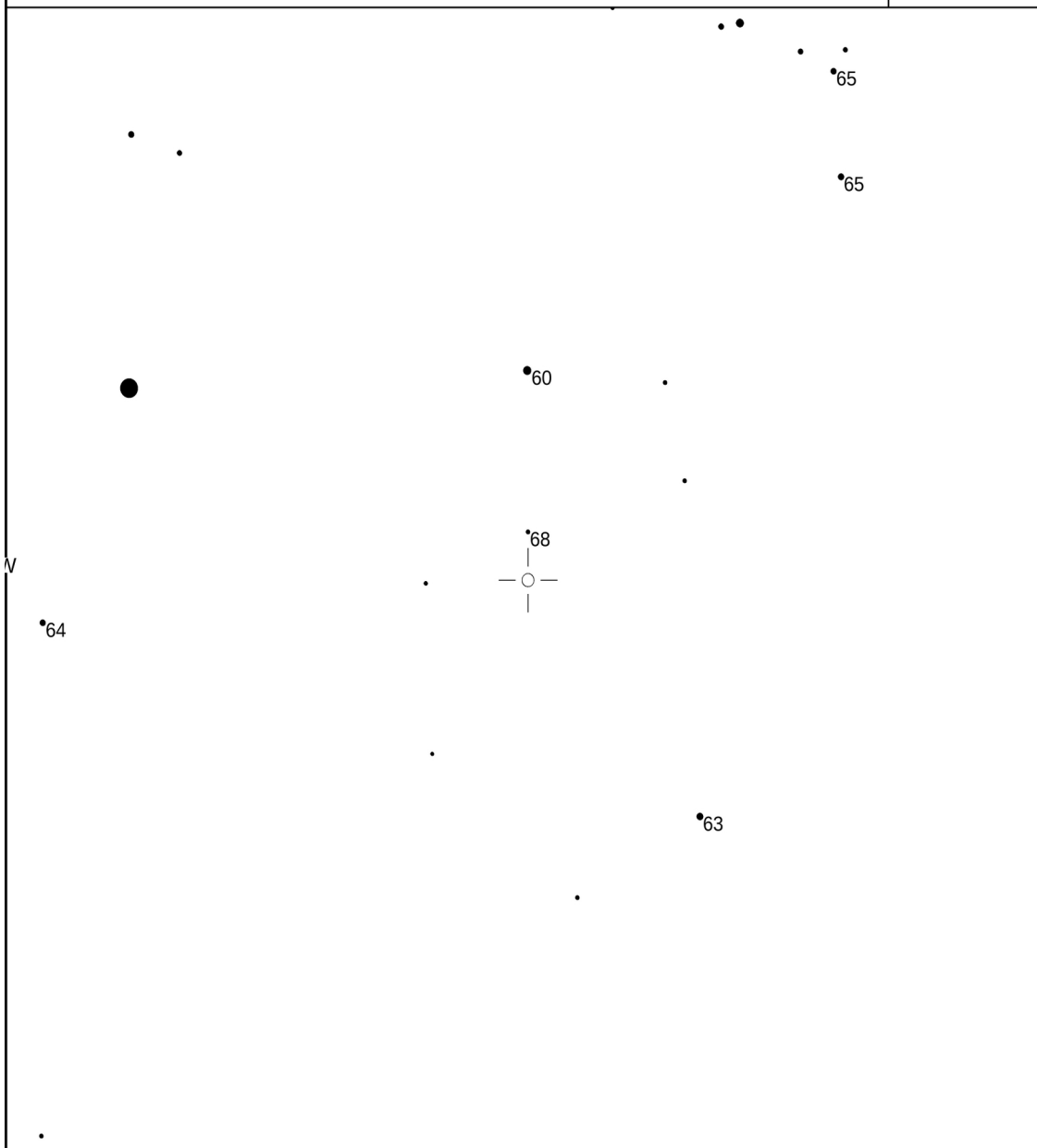
FS Com

Magn: 5.3 - 6.1 V  
Period: 58  
Type: SRB  
Spec: M5III

FS COM  
(2000) 13:06:22.60 +22:36:58.3

AAVSO Chart

Chart  
13169DII



FOV = 8.0°

Please use the photometry table for CCD observations.

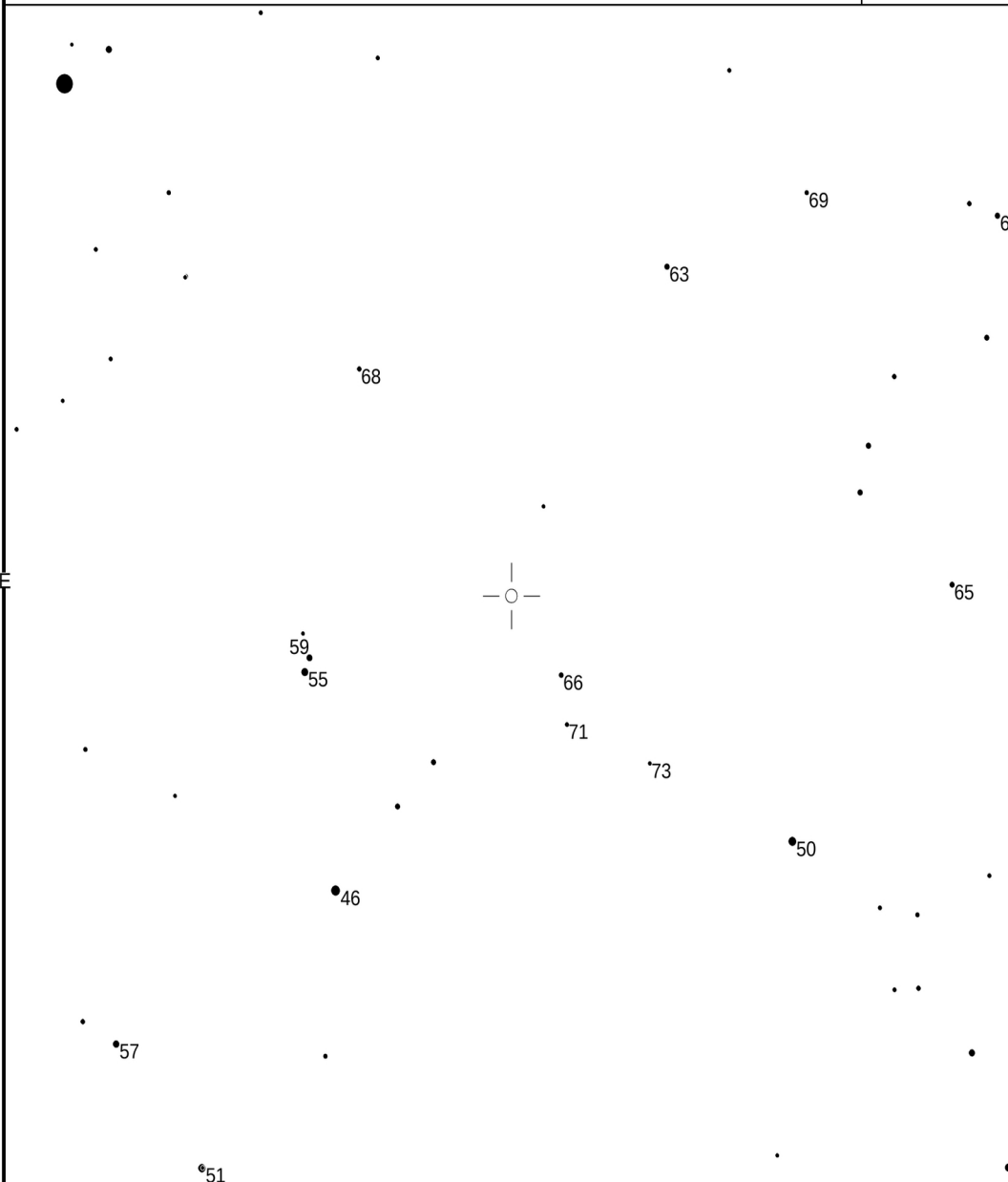


V0744 Cen

Magn: 4.83 - 6.95 V  
Period: 167.3  
Type: SRB  
Spec: M5-M8III

V744 CEN  
(2000) 13:39:59.81 -49:56:59.8

AAVSO  
Chart  
13169DJF



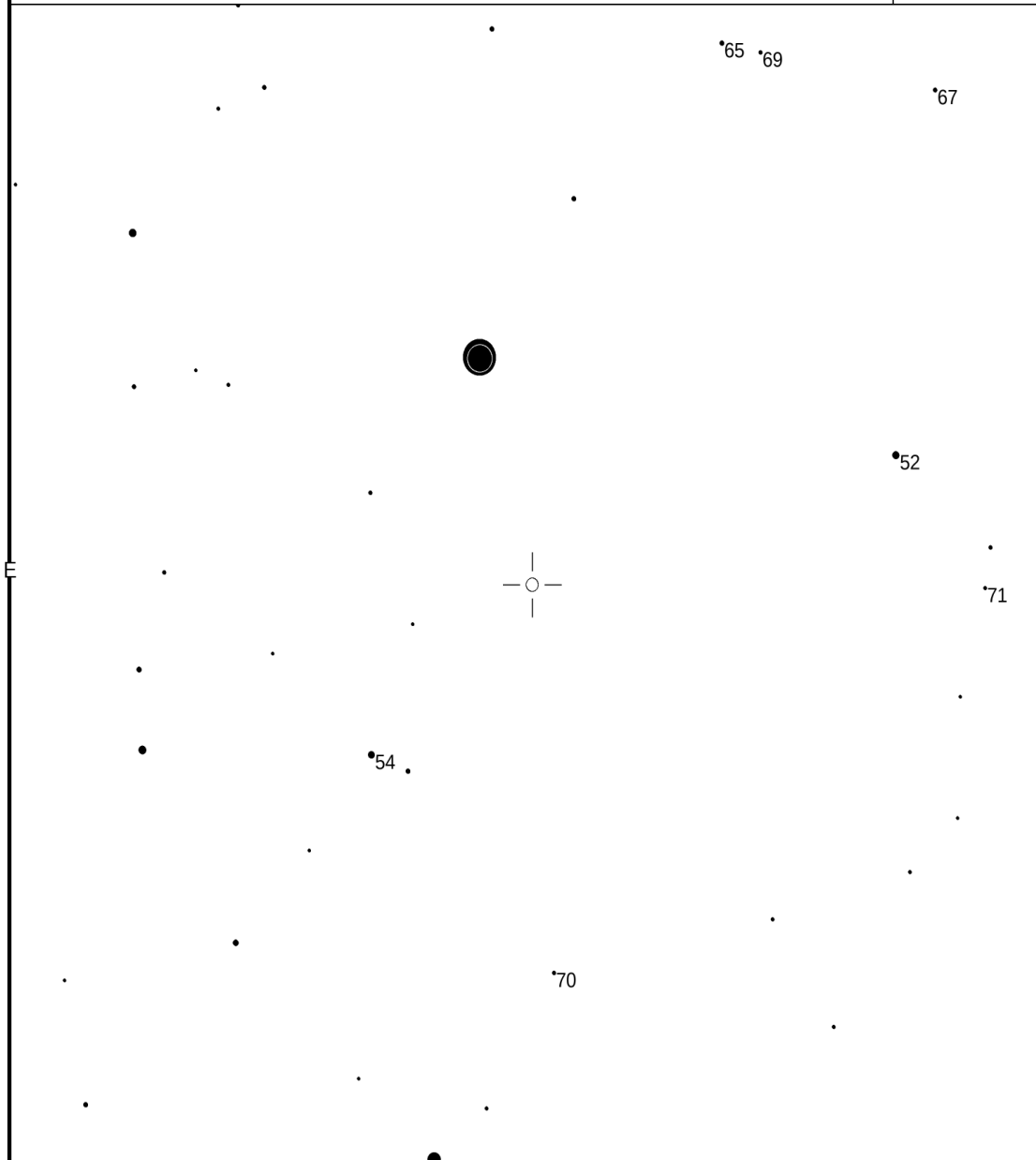
Please use the photometry table for CCD observations.

V0737 Cen

Magn: 6.54 - 6.93 V  
Period: 7.06595  
Type: DCEP  
Spec: G0-G2Ib

V737 CEN  
(2000) 14:37:11.97 -62:00:39.2

AAVSO  
Chart  
13169CWY



Please use the photometry table for CCD observations.



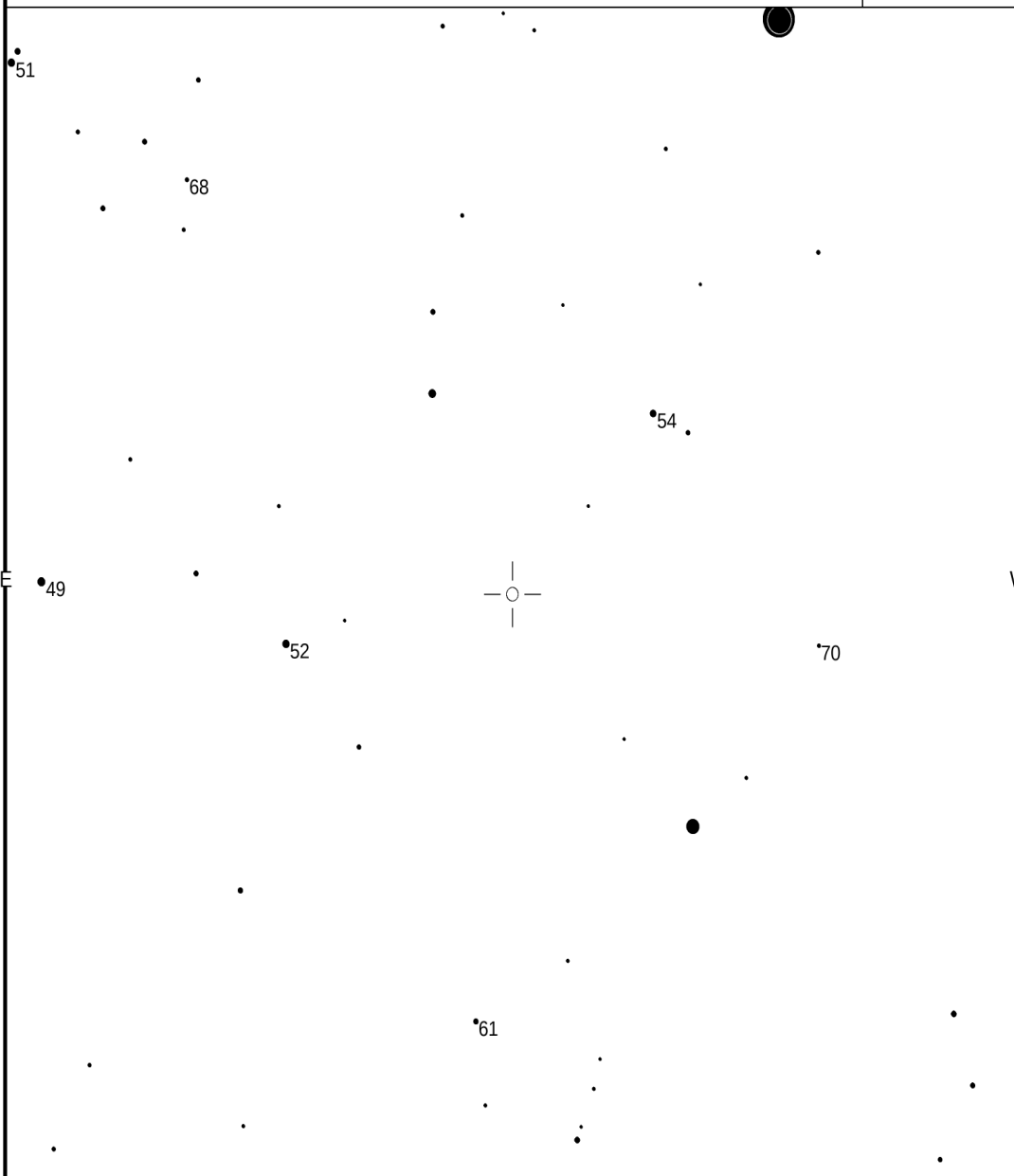
AX Cir

Magn: 5.65 - 6.09 V  
Period: 5.273268  
Type: DCEP  
Spec: F2-G2II+B4

AX CIR  
(2000) 14:52:35.26 -63:48:35.4

AAVSO  
Chart

13169CWX



FOV = 6.0°

Please use the photometry table for CCD observations.

S

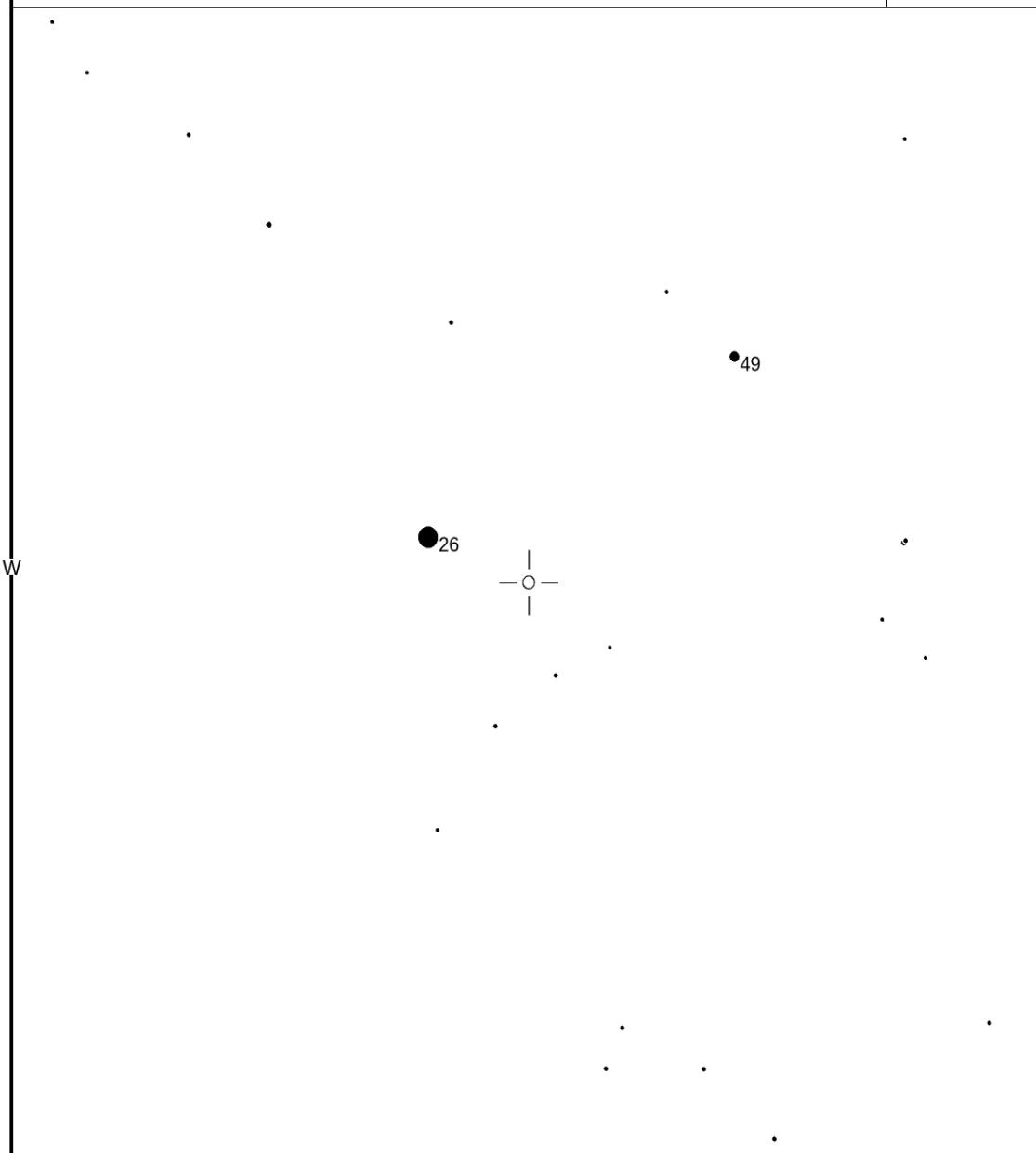
FZ Lib

Magn: 6.73 - 7.24 V  
Period:  
Type: SR  
Spec: M4III

FZ LIB  
(2000) 15:19:21.81 -09:08:47.5

AAVSO  
Chart

X27356AD



FOV = 6.0°

Please use the photometry table for CCD observations.

N

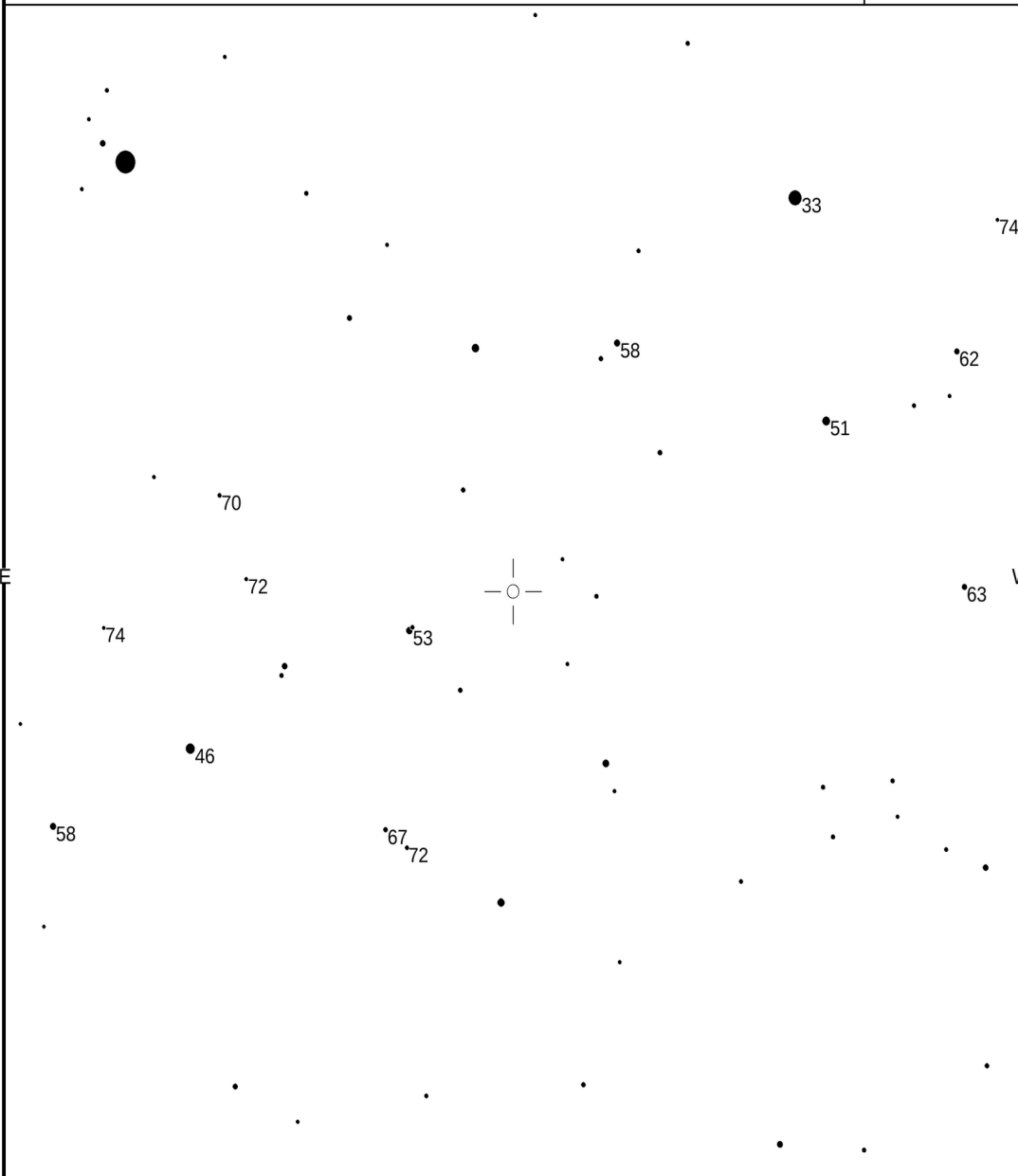
V0636 Sco

Magn: 6.4 - 6.92 V  
Period: 6.7969922  
Type: DCEP  
Spec: F7/8Ib/II-G5

V636 SCO  
(2000) 17:22:46.48 -45:36:51.4

AAVSO  
Chart

13169DJH



FOV = 7.0°

Please use the photometry table for CCD observations.

V0905 Sco

Magn: 6.21 - 6.97 V  
Period: 57  
Type: SDOR  
Spec: B8-A9Ia+

V905 SCO  
(2000) 17:41:59.03 -33:30:13.7

AAVSO  
Chart

13169DJK



FOV = 4.0°

Please use the photometry table for CCD observations.

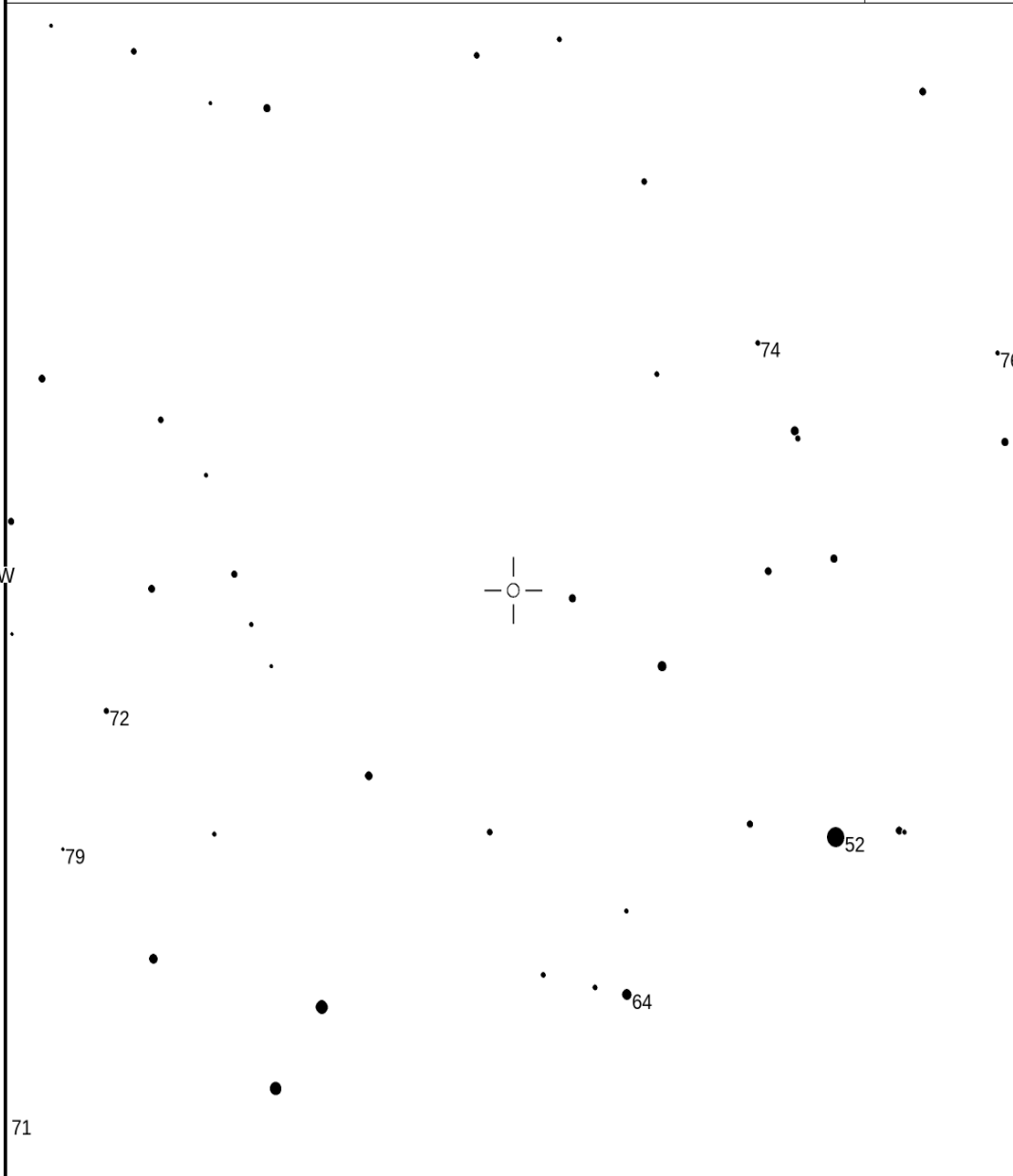
V3879 Sgr

Magn: 6.05 - 6.58 V  
Period: 5  
Type: SRB  
Spec: M5.2III

V3879 SGR  
(2000) 18:42:55.10 -19:17:03.2

AAVSO  
Chart

X273551J



FOV = 5.0°

Please use the photometry table for CCD observations.

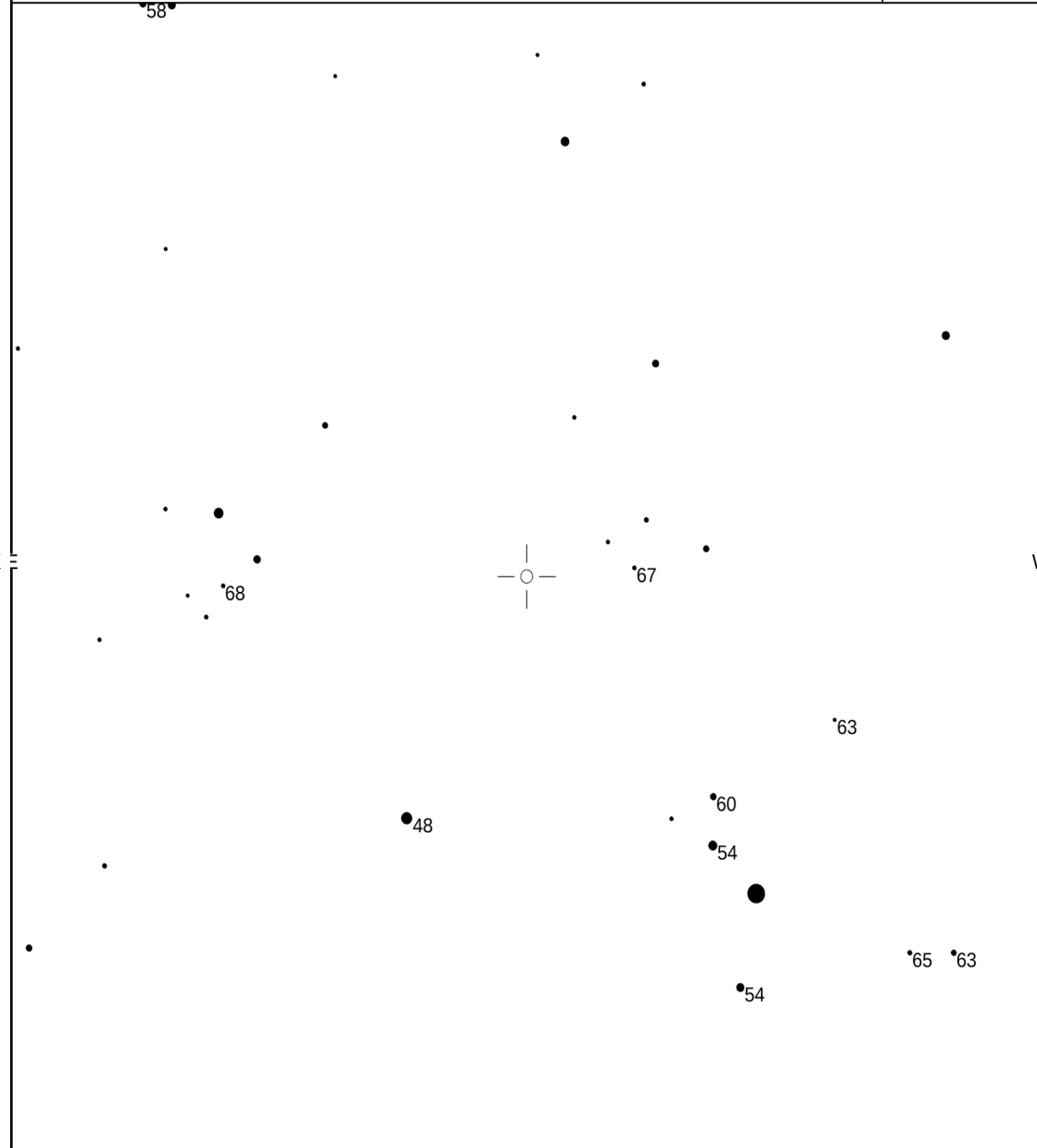
Y Sgr

Magn: 5.25 - 6.24 V  
Period: 5.773383  
Type: DCEP  
Spec: F5-G0Ib-II

Y SGR  
(2000) 18:21:22.99 -18:51:36.0

AAVSO  
Chart

13169DIO



FOV = 8.0°

Please use the photometry table for CCD observations.

W Sgr

Magn: 4.28 - 5.10 V  
Period: 7.594984  
Type: DCEP  
Spec: F4-G2Ib

**W SGR**  
(2000) 18:05:01.22 -29:34:48.3

AAVSO  
Chart

X27358AX



FOV = 6.0°

Please use the photometry table for CCD observations.

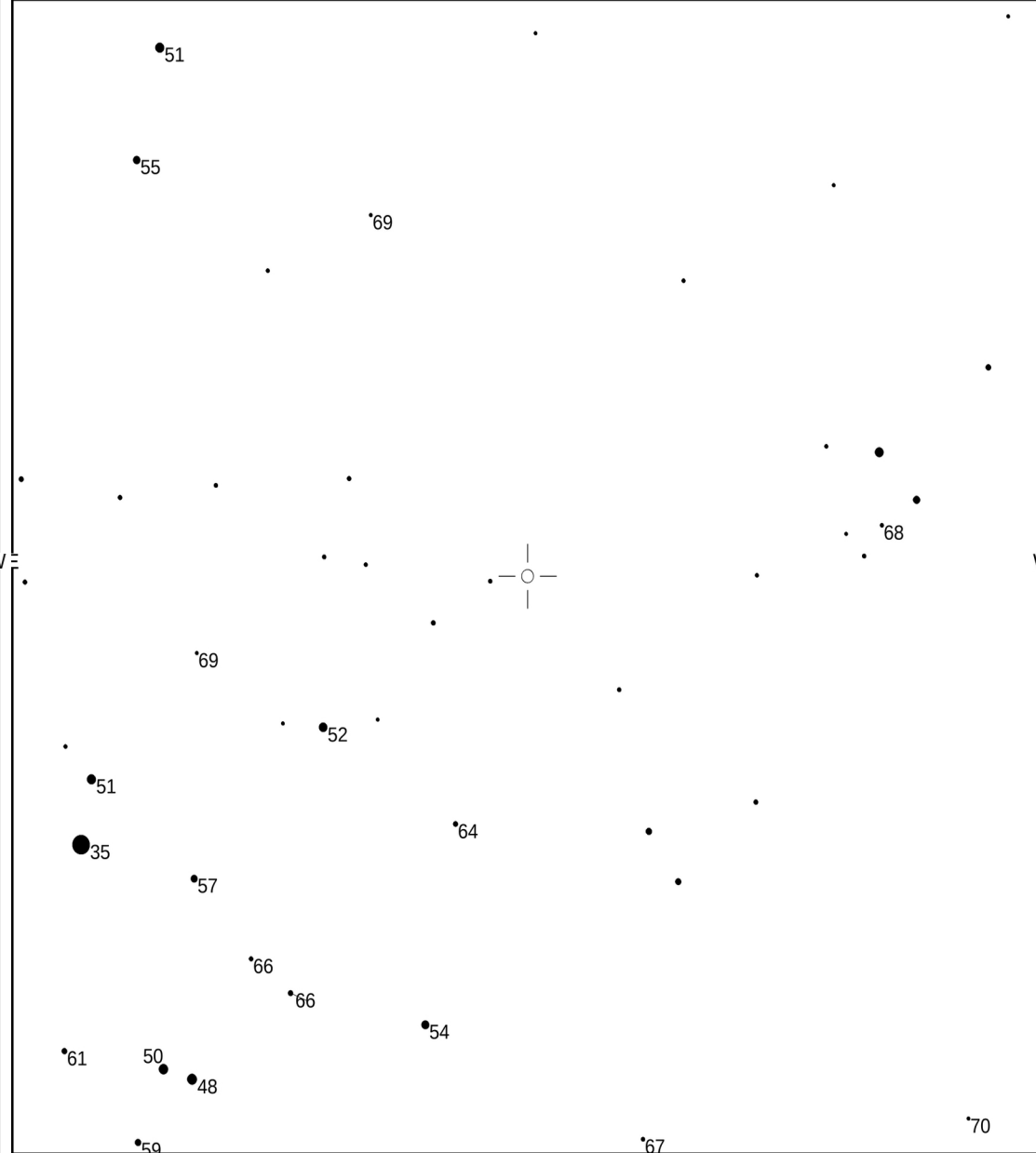
V3879 Sgr

Magn: 6.05 - 6.58 V  
Period: 5  
Type: SRB  
Spec: M5.2III

**V3879 SGR**  
(2000) 18:42:55.10 -19:17:03.2

AAVSO  
Chart

13169DIT



FOV = 8.0°

Please use the photometry table for CCD observations.

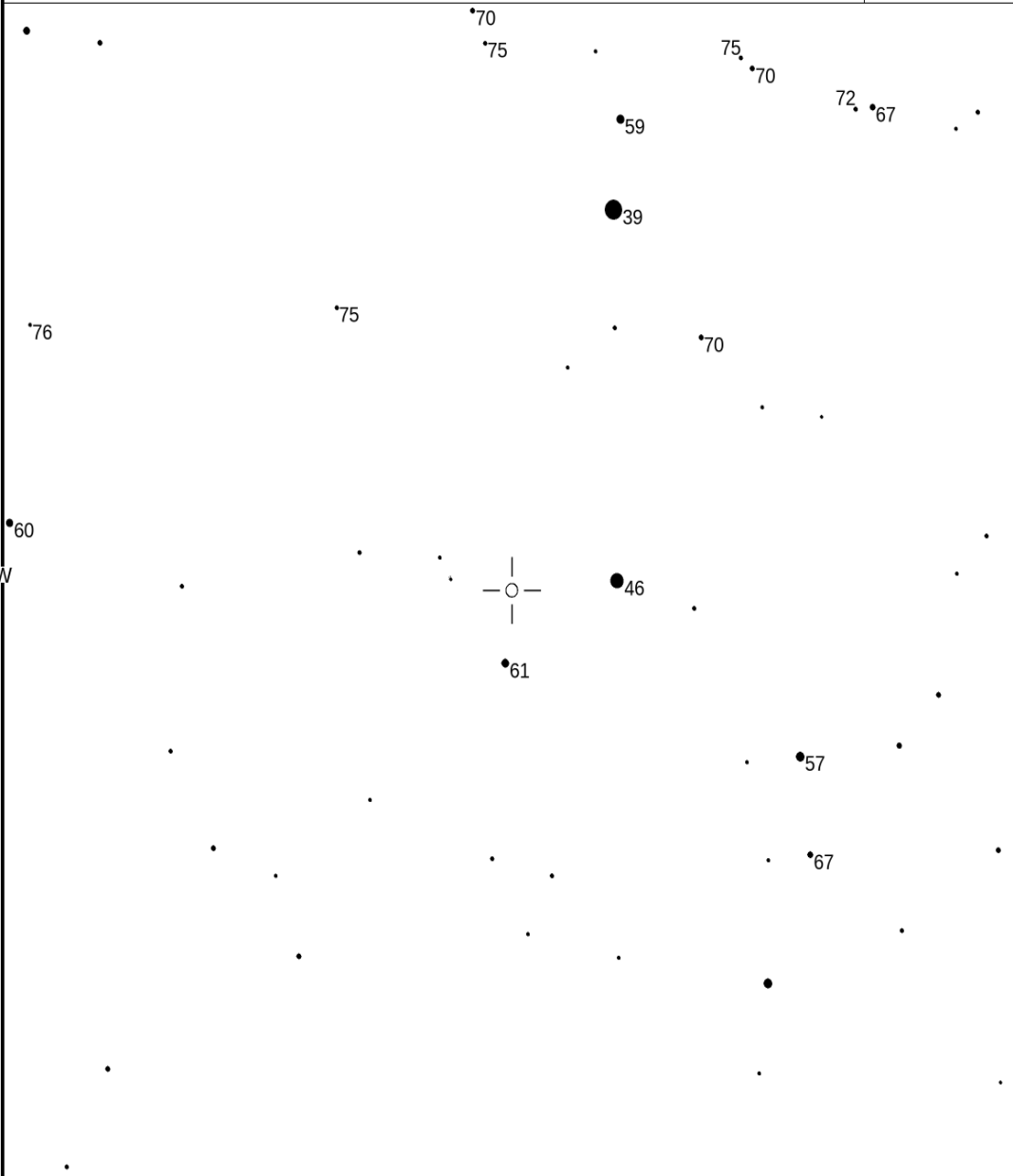
V1942 Sgr

Magn: 6.71 - 7.23 V  
Period: 121.4  
Type: SRB  
Spec: C6,4(N2/R8)

V1942 SGR  
(2000) 19:19:09.60 -15:54:30.0

AAVSO  
Chart

X27357O



FOV = 6.0°

Please use the photometry table for CCD observations.

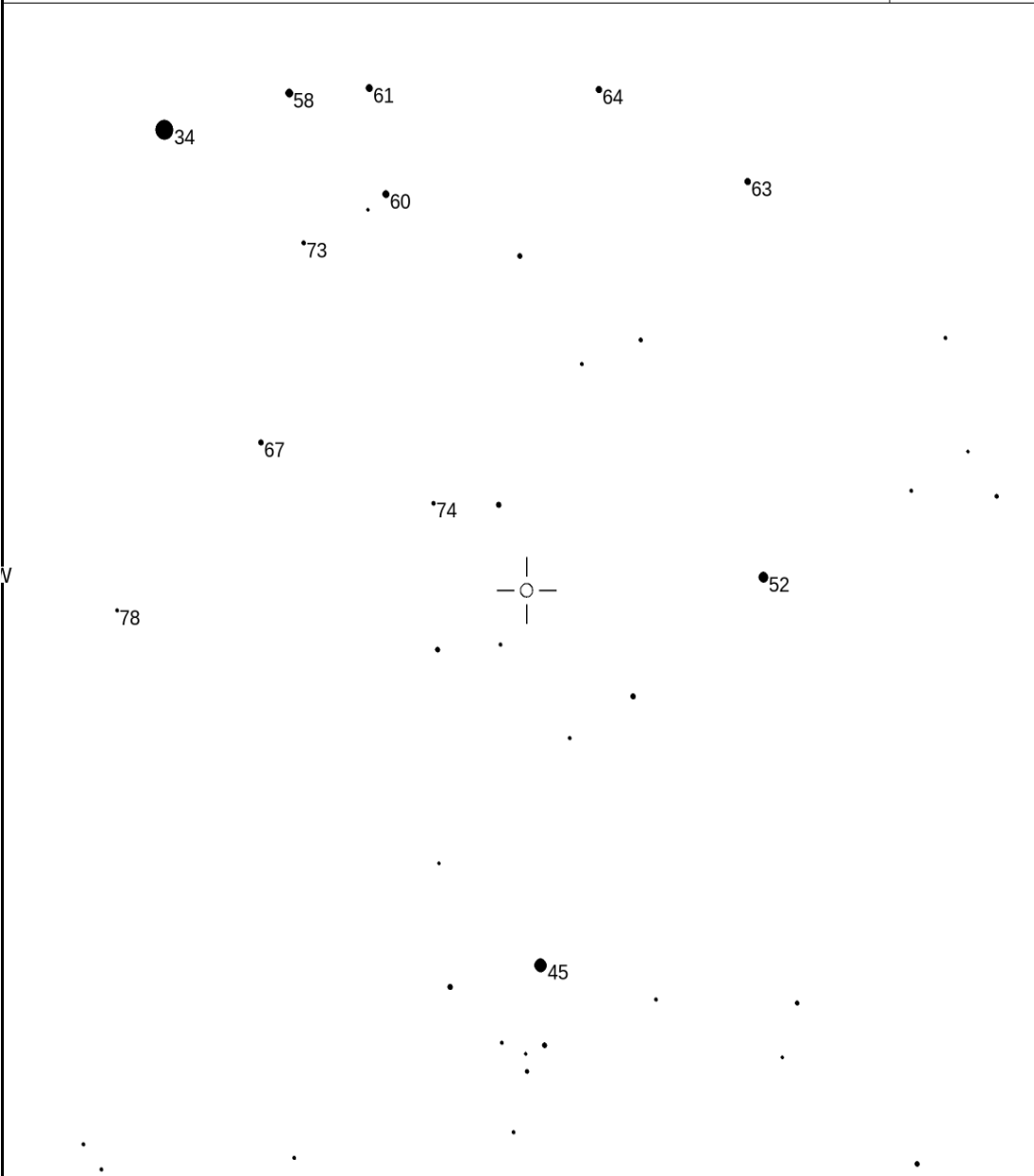
V0450 Aql

Magn: 6.14 - 6.86 V  
Period: 64.2  
Type: SRB  
Spec: M5III-M8III

V450 AQL  
(2000) 19:33:46.03 +05:27:56.5

AAVSO  
Chart

X27356AH



FOV = 6.0°

Please use the photometry table for CCD observations.

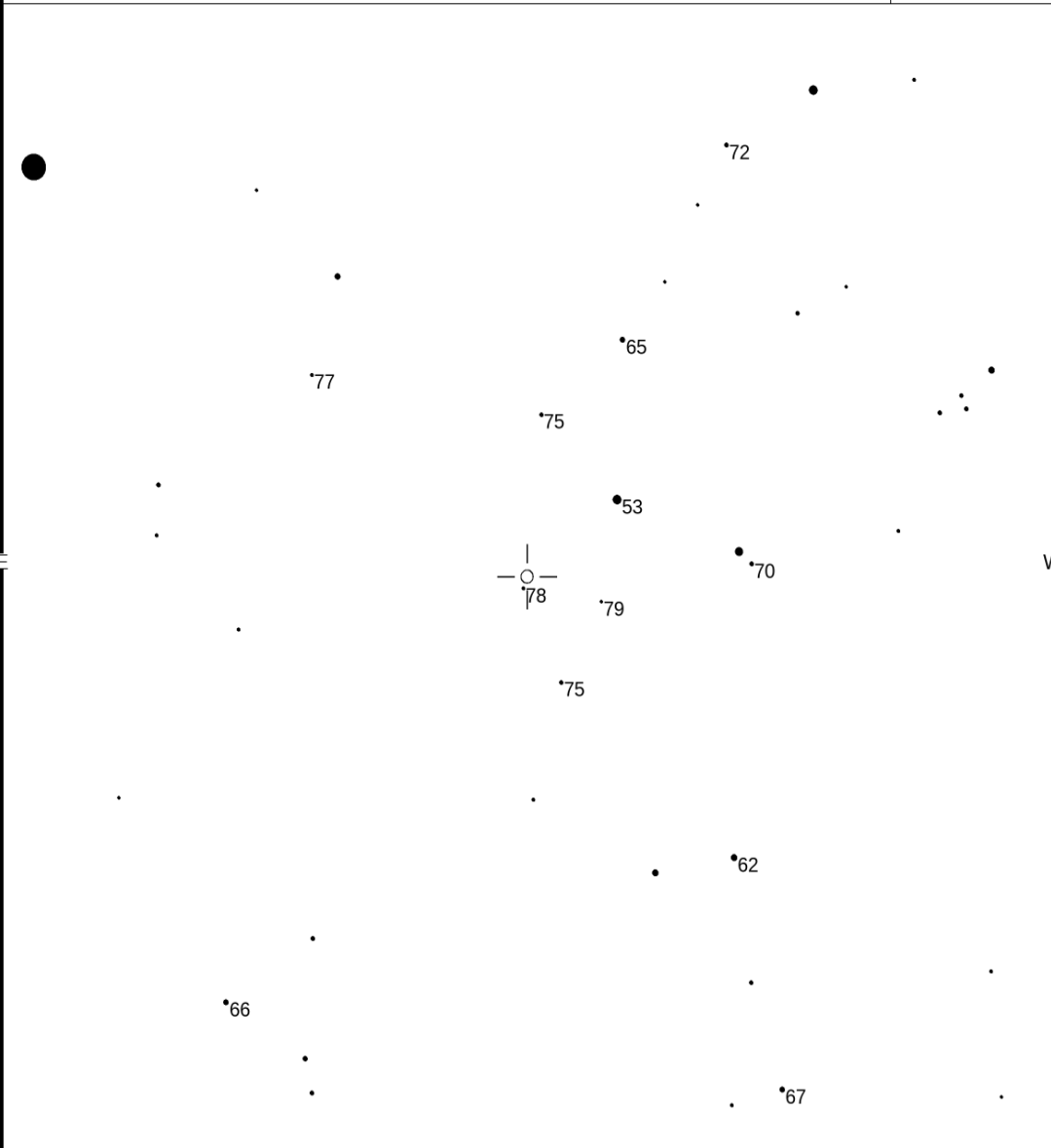
NU Pav

Magn: 4.91 - 5.26 V  
Period: 86.5  
Type: SRB  
Spec: M6III

NU PAV  
(2000) 20:01:44.72 -59:22:33.0

AAVSO  
Chart

X27341NW



FOV = 7.0°

Please use the photometry table for CCD observations.

S

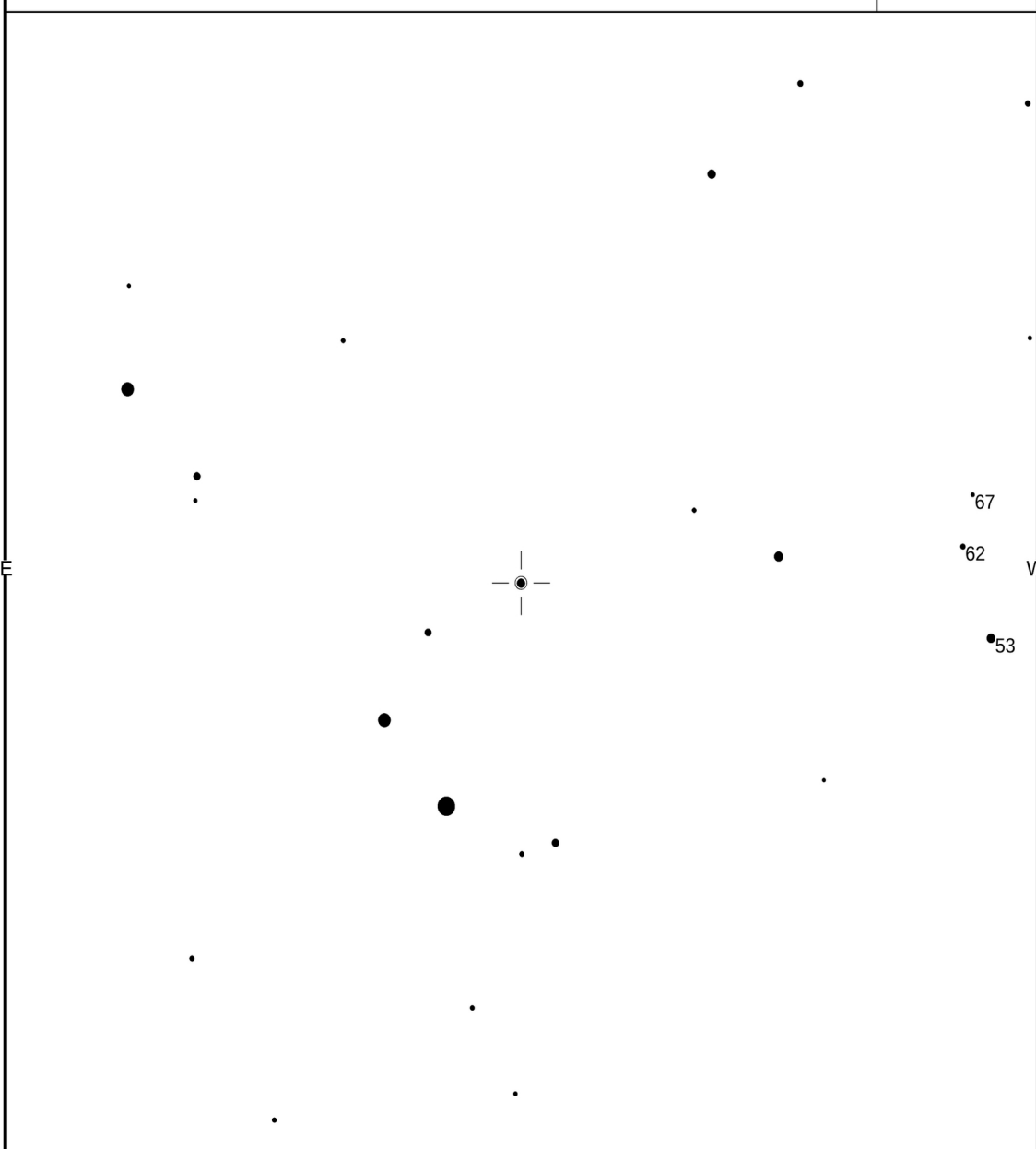
NSV 13683

Magn: 5.35 - 5.77 V  
Period:  
Type:  
Spec: K2

NSV 13683  
(2000) 21:24:09.70 -20:51:01.0

AAVSO  
Chart

13169DHP



FOV = 8.0°

Please use the photometry table for CCD observations.

S

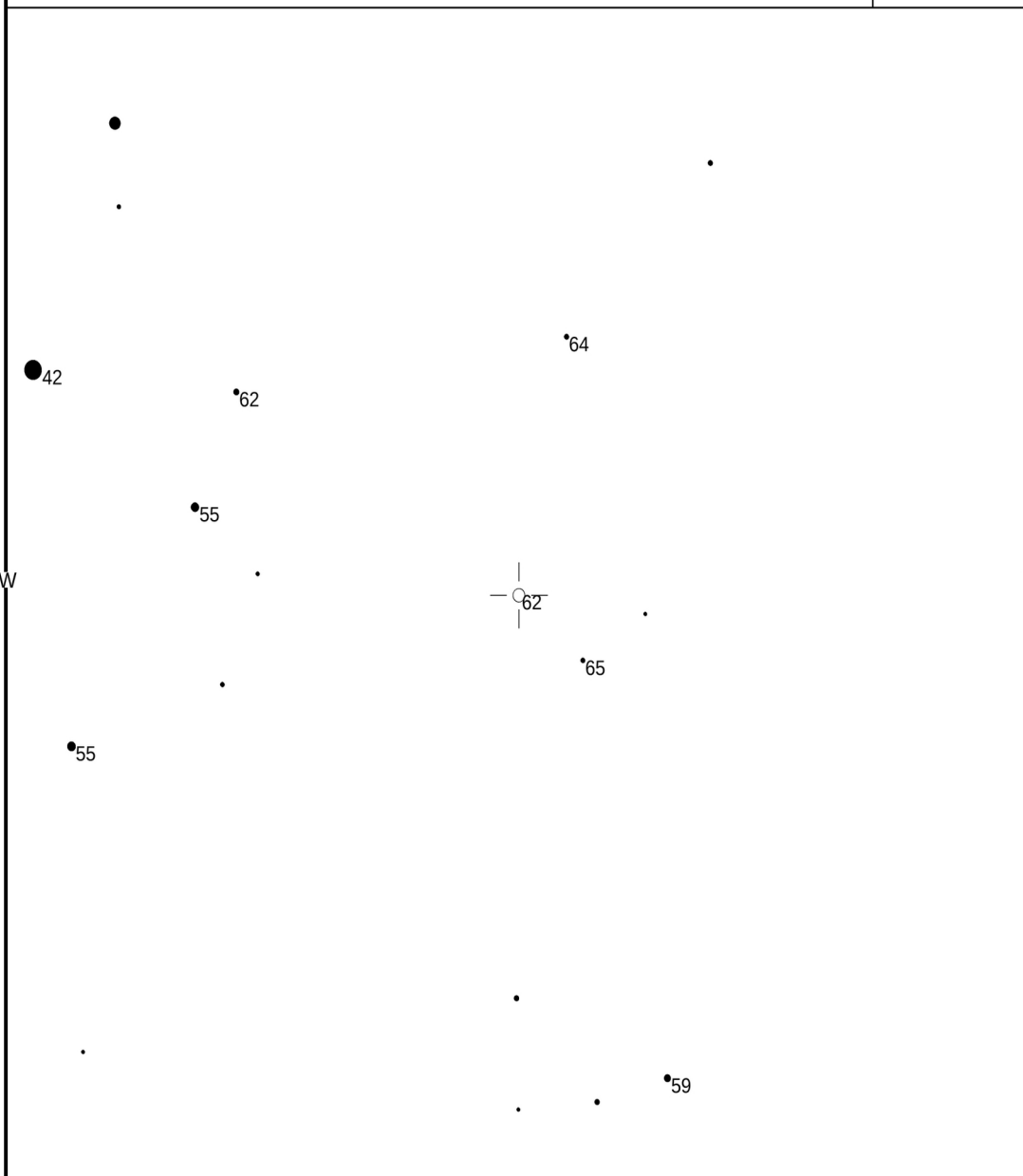
NSV 14588

Magn: 6.26 V  
Period:  
Type:  
Spec: K3

NSV 14588  
(2000) 23:29:31.50 -04:31:47.0

AAVSO  
Chart

13169DHS



Please use the photometry table for CCD observations.

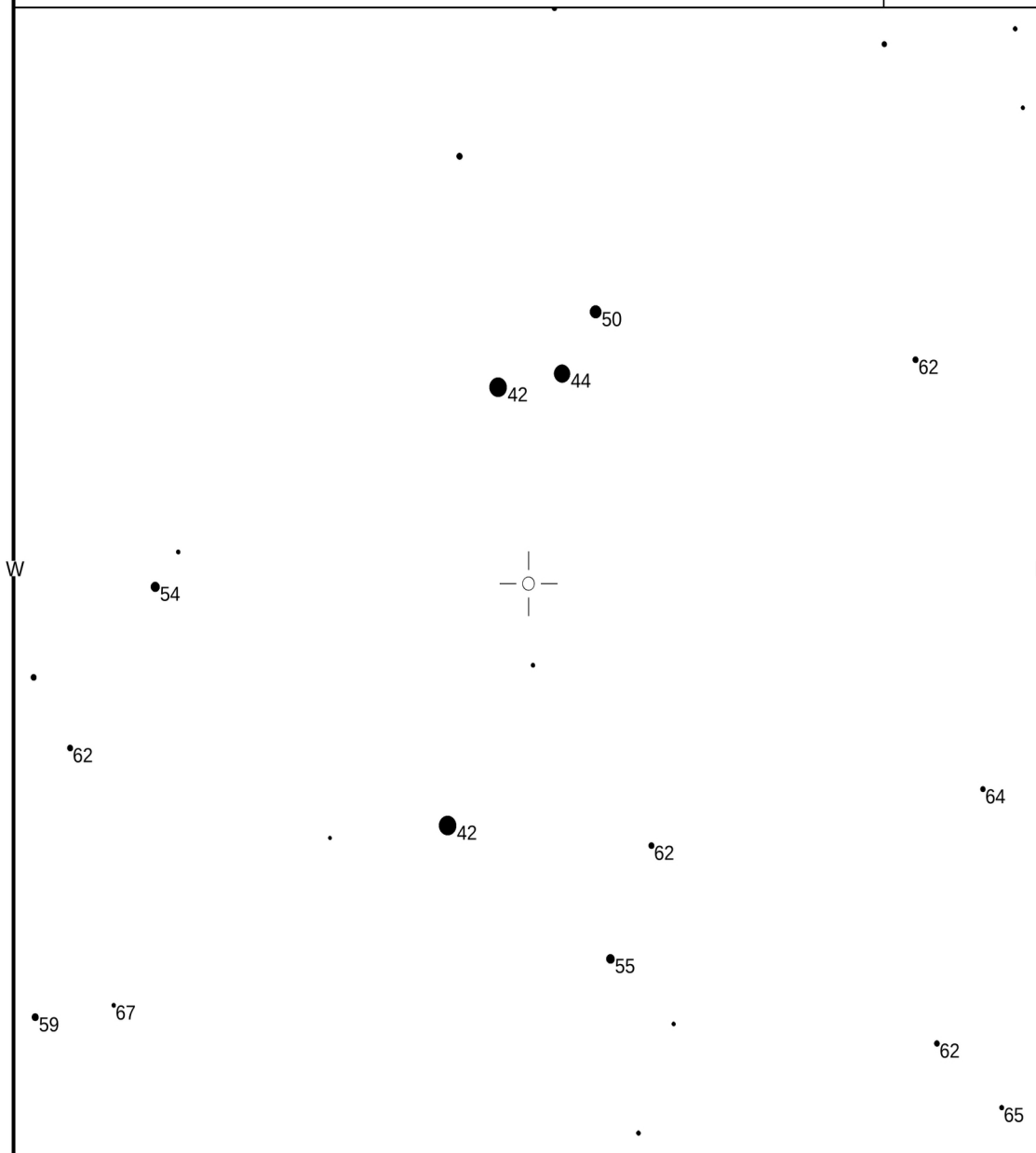
Khi Aqr

Magn: 4.75 - 5.10 V  
Period: 35.25  
Type: SR  
Spec: M3III

KHI AQR  
(2000) 23:16:50.95 -07:43:35.3

AAVSO  
Chart

13169DHY



Please use the photometry table for CCD observations.

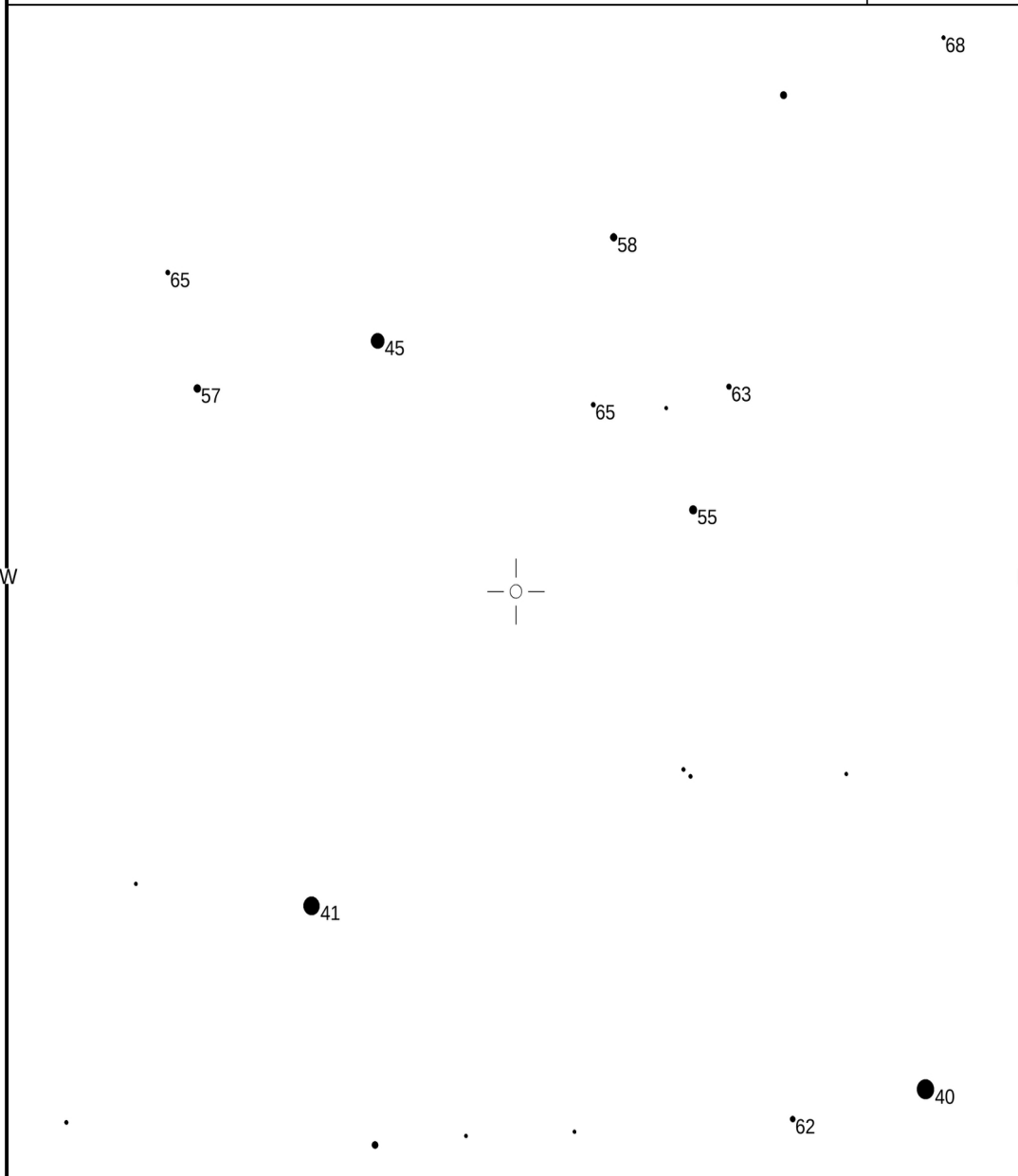
**TX Psc**

Magn: 4.79 - 5.2 V  
 Period:  
 Type: LB  
 Spec: C7,2(N0)(Tc)

**TX PSC**  
 (2000) 23:46:23.52 +03:29:12.5

**AAVSO  
 Chart**

13169DHZ



FOV = 8.0°

Please use the photometry table for CCD observations.

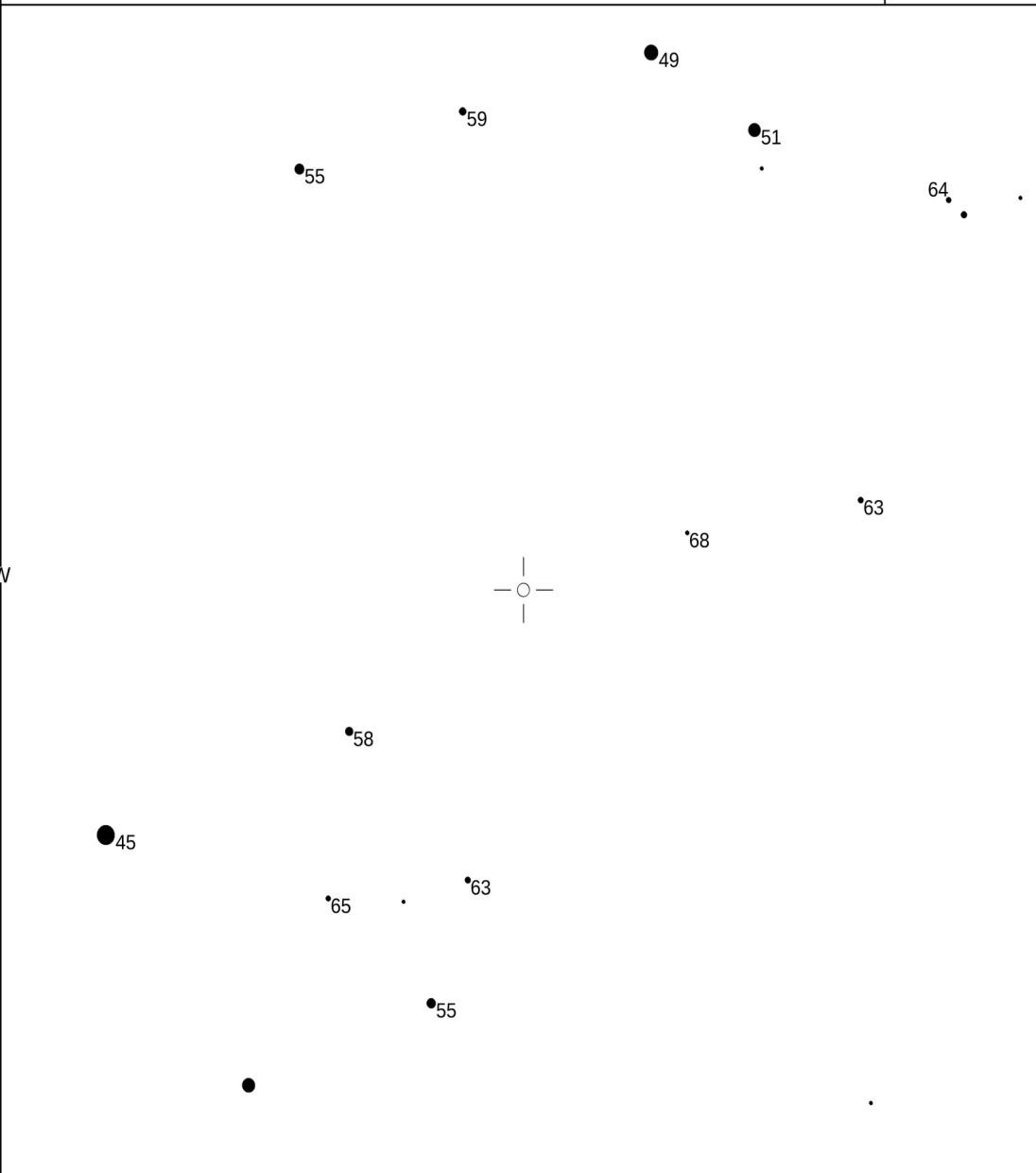
**XZ Psc**

Magn: 5.61 - 5.97 V  
 Period:  
 Type: SR  
 Spec: M5III

**XZ PSC**  
 (2000) 23:54:46.62 +00:06:33.5

**AAVSO  
 Chart**

13169DIC



FOV = 8.0°

Please use the photometry table for CCD observations.



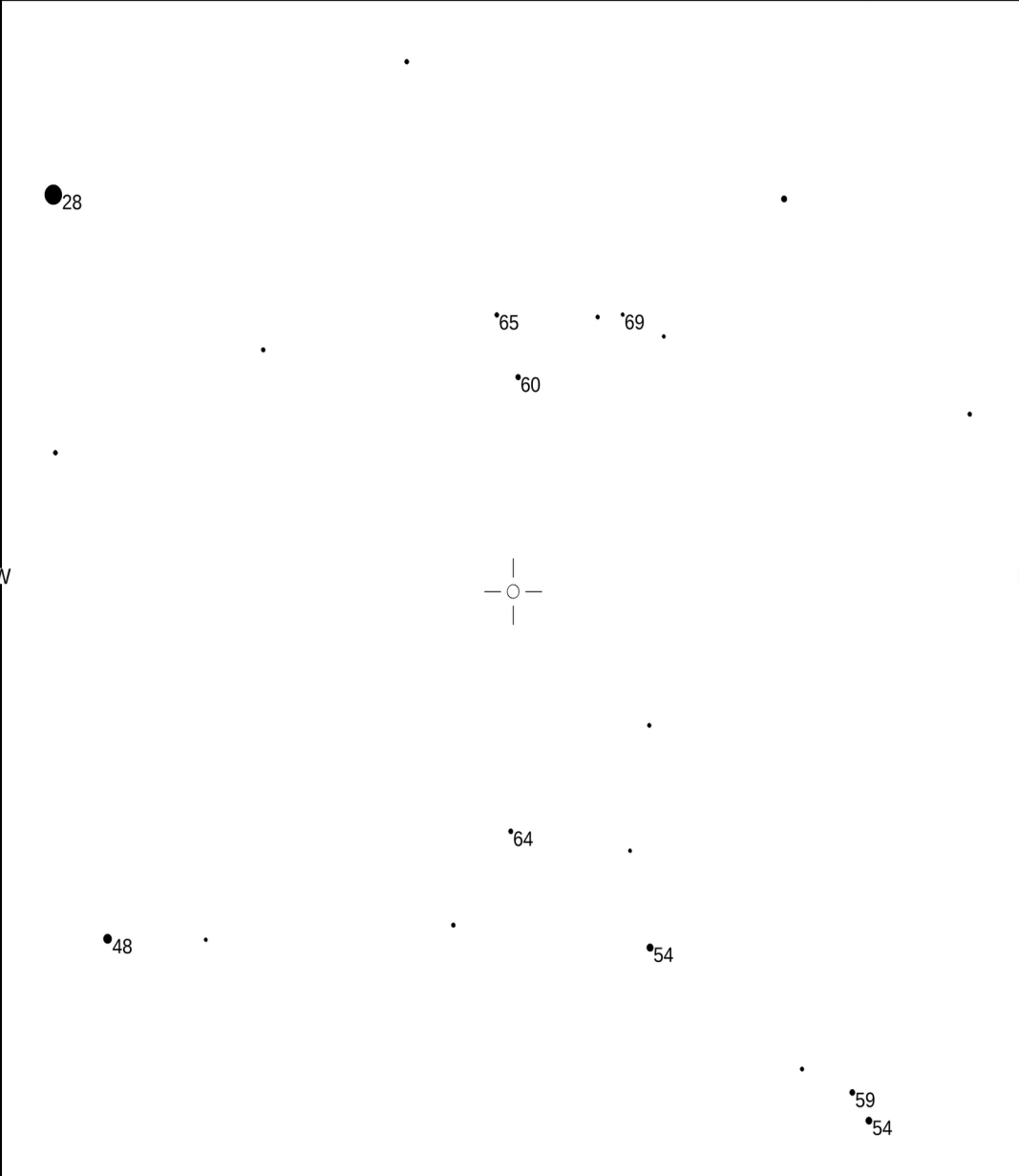
TV Psc

Magn: 4.65 - 5.42 V  
Period: 49.1  
Type: SR  
Spec: M3III

TV PSC  
(2000) 00:28:02.91 +17:53:35.2

AAVSO  
Chart

13169DID



FOV = 8.0°

Please use the photometry table for CCD observations.

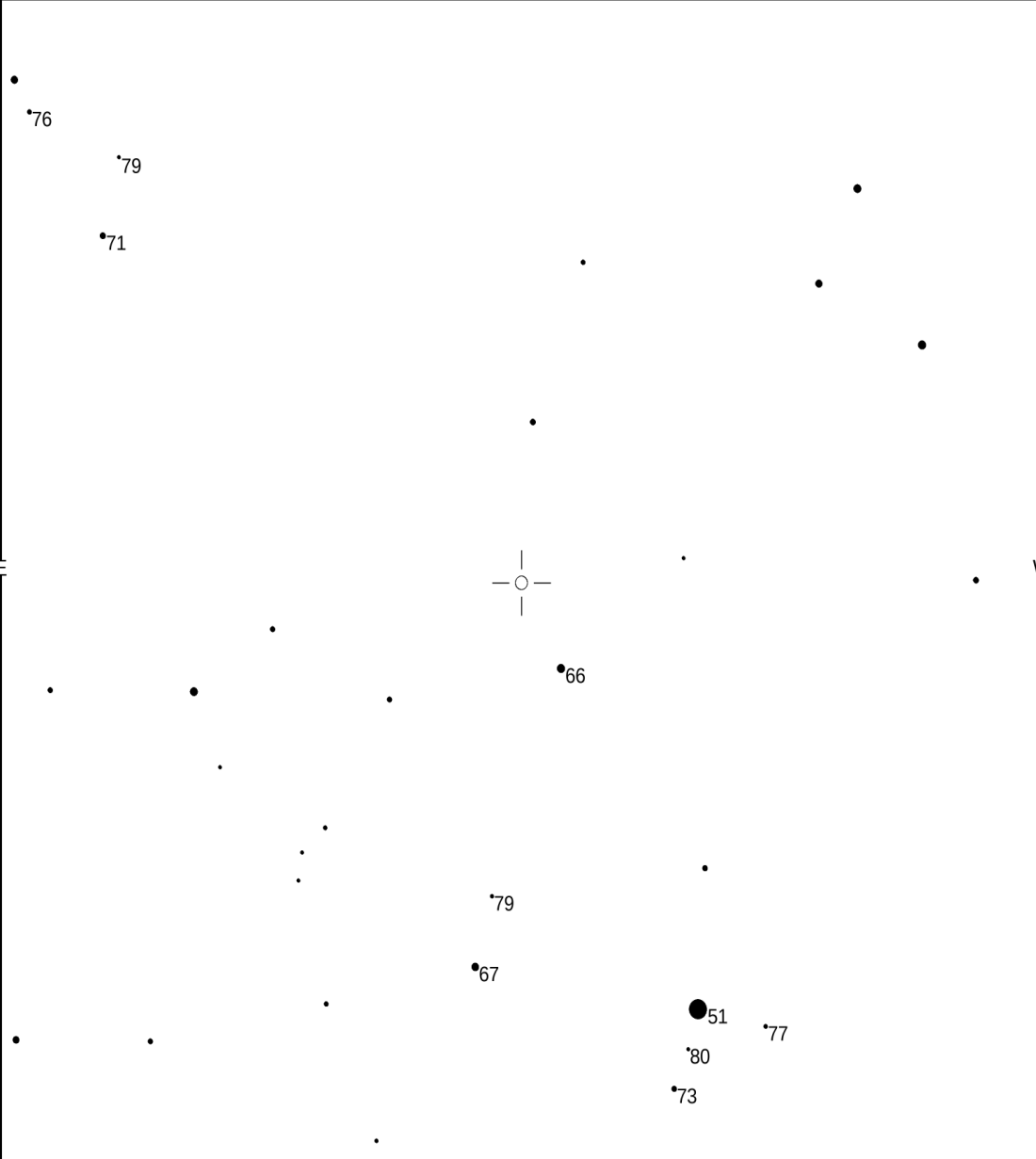
TW Hor

Magn: 5.52 - 5.95 V  
Period: 270.3  
Type: SRB  
Spec: C7,2(N0)

TW HOR  
(2000) 03:12:33.14 -57:19:17.7

AAVSO  
Chart

13169CWB



FOV = 6.7°

Please use the photometry table for CCD observations.