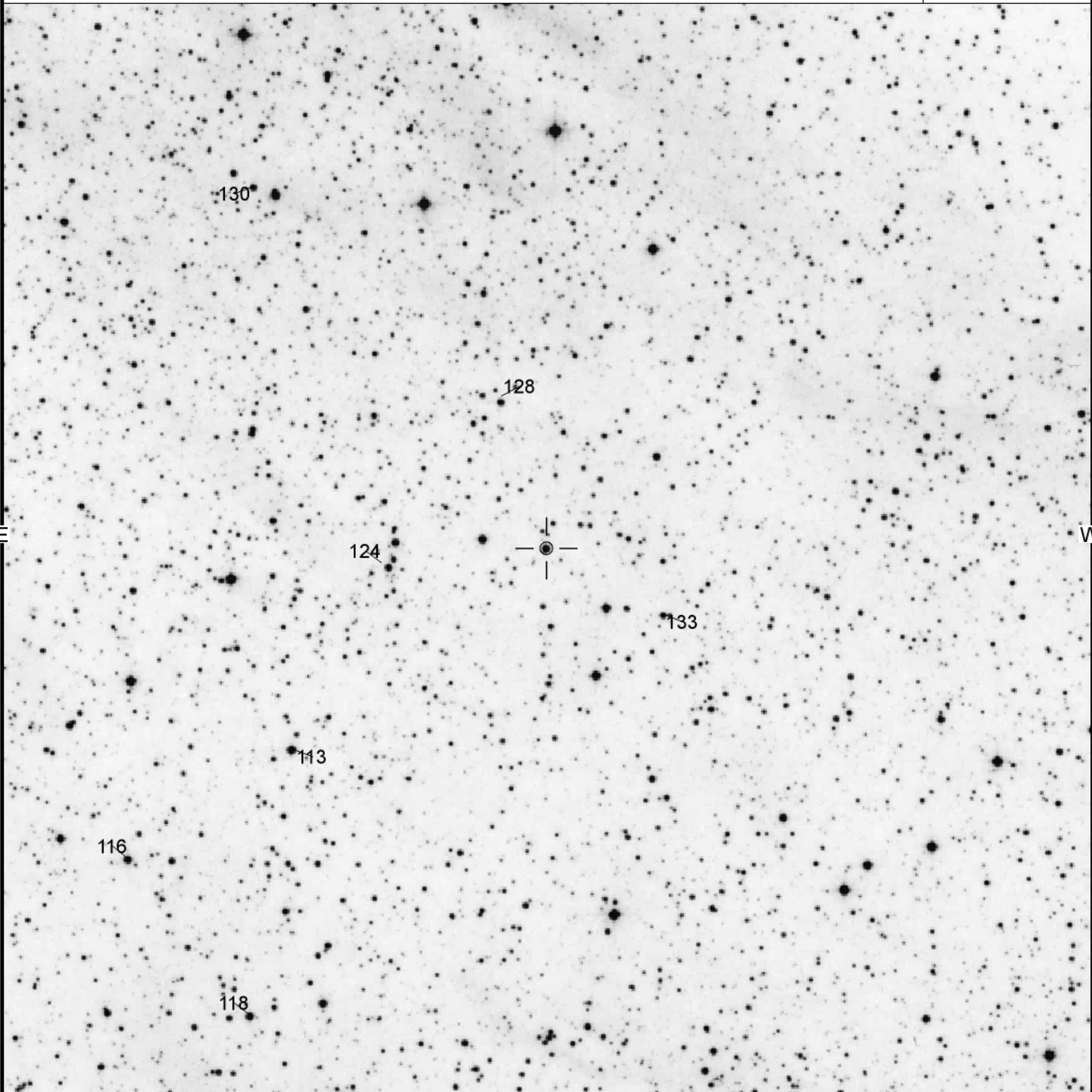


KIC 8462852

Magn: 11.88 (0.26)Kp V  
Period:  
Type: ROT/DIP  
Spec: F3IV/V

N  
**KIC 8462852**  
(2000) 20:06:15.46 +44:27:24.8

**AAVSO**  
Chart  
X20915K



FOV = 25.0'

Please use the photometry table for CCD observations.

<https://www.aavso.org/vsp/>

Copyright © 2017 AAVSO