

Ross 780

LFT1745

-1506290

G156-57

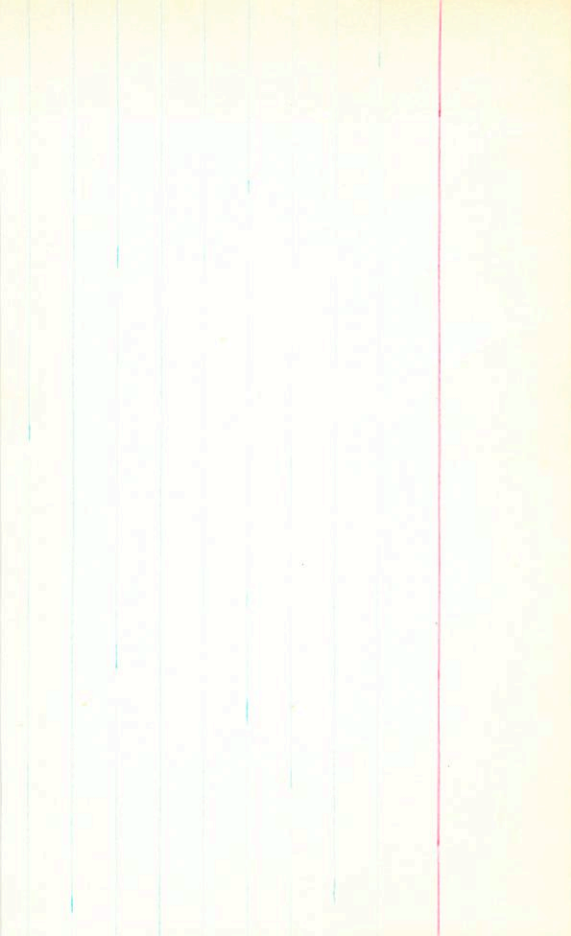
22 50.6 -14

.205 ~~100~~ Spnd

+970-560 Ross  
+910-635 OPM  
+1010-680 Q  
+950-665 IT  
3 +956-666 IT

10.10 +1.58 +1.12 (2)  
8.76 +1.22 (9)

(BLU)



BPM15159

LFT1747

L49-19

117 (17)

22 52.3 -75 42

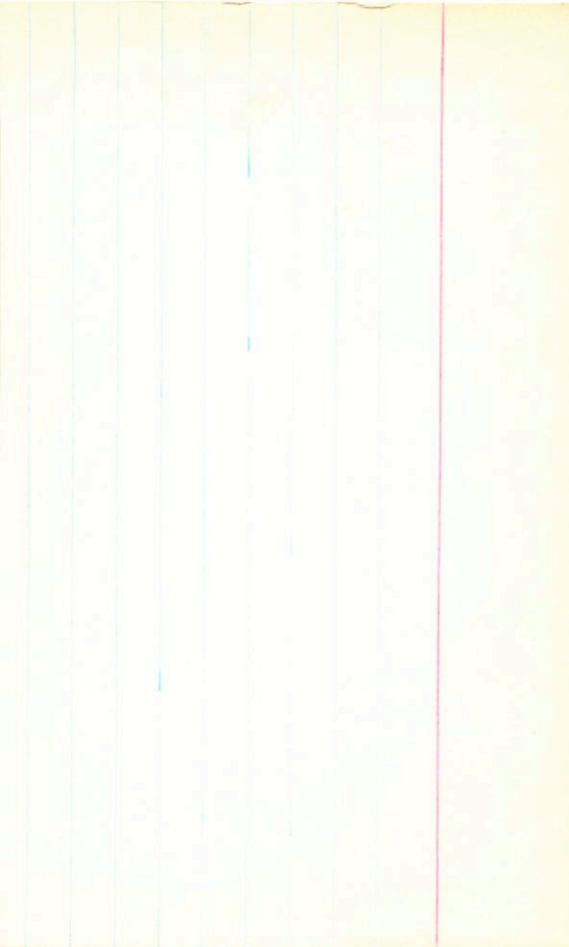
-86;

10.42 + 148 + 1.01 (2)

9.20 + 1.055 (2)

(361)

-1015 - 580 RPM  
-1065 - 1055 TT



BPM 97575

+1075 + 570 BPM  
+1125 + 525 G-

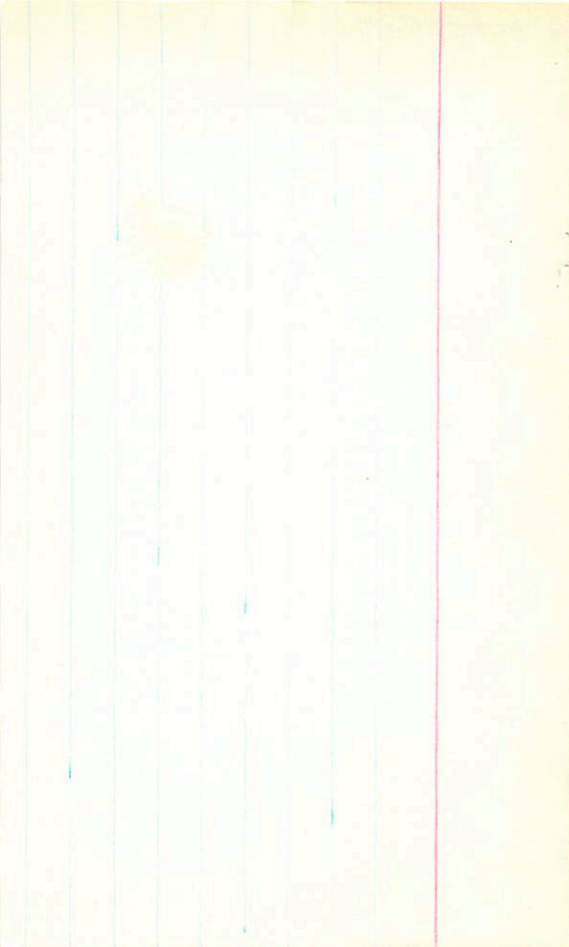
LFT 1733

22 40.2 +17 24

G67-15

11.83 + 1.555 + 1.165 ①  
10.56 + 1.015 ②

359



R000671

LFT 1751

22 54.2 +16

-1050	-280	Prod
-975	-335	BPM
-1020	-290	G
-1045	-265	TT
17		

+1504733

G67-37

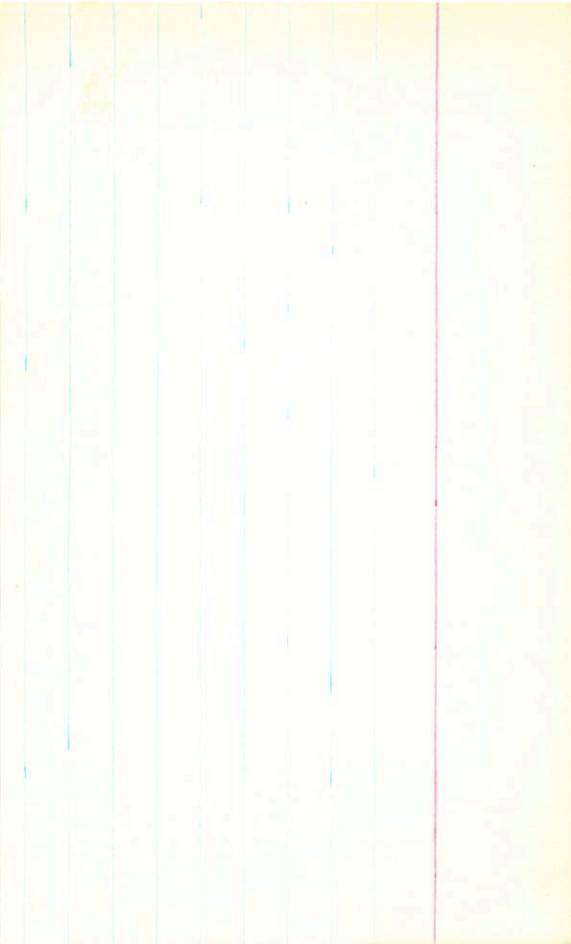
dms-23.0

868 +1.51 +1.18 (2)

7.60 +0.88 (2)

.143 (70)

363





BPM 15/99

LFT 1750

22 53.4 -60 18

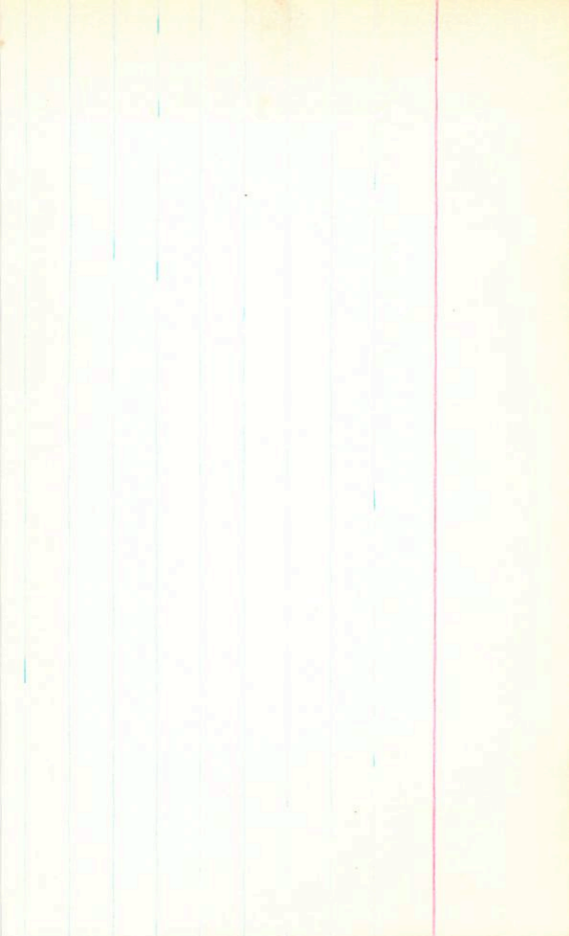
L-167-14

14.08 + 1.79 + 1.45 ②

FL8: 12.27 + 1.42 ③

278

-530-515 BPM



+6775 +1310 GC

GL32159

LFT1758

23 02.6 -36 09

-3601562

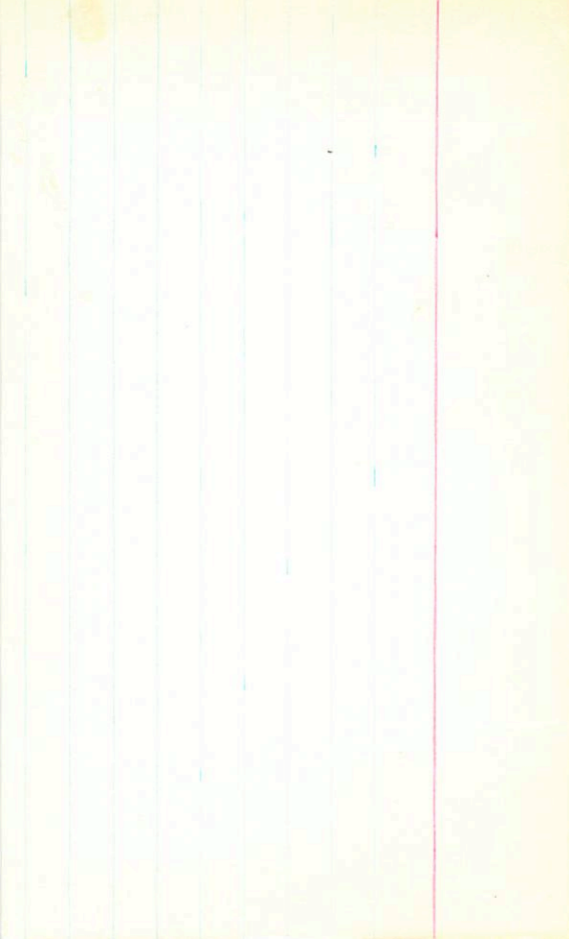
7.37 + 148 + 117 (2)

M2V +10.0

6.34 + 0.54 (2)

.273 (19)

364

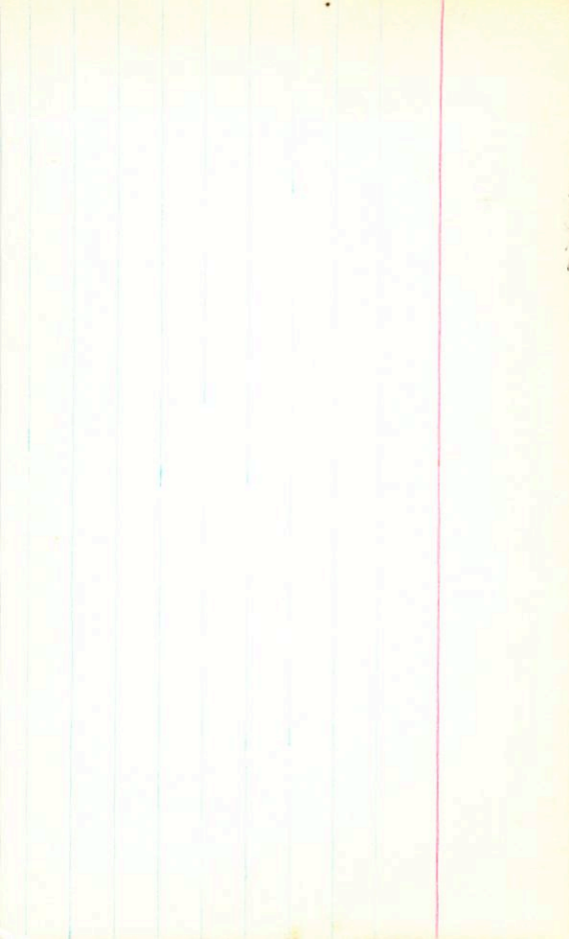


+1160-408

23 05.5 +68 24 13.9+2

Q 241-45

364



G-128-34

23 06.0 +31

24

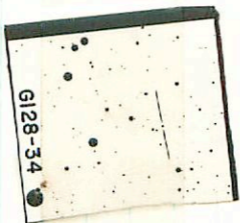
1766 -153 +110

1022 (13)  
1021 #105 101

367

+1455 +310 G  
+1460 +345 J  
+1466 +339 15

23 07 09 +31 32



G128-34

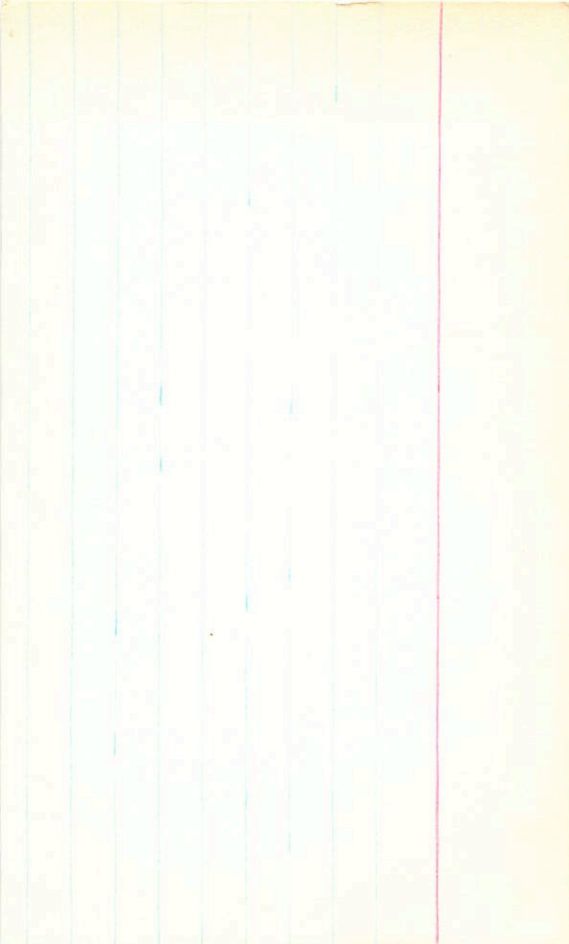


LP  
+1265+435 G

LP48-822 23 047 471 27

G241-44

365



BPm82655

+25 -1405 BPm

LPY1766

23 08-1 -19 28

L79676

12.47 +1.49 +1.05 (3)

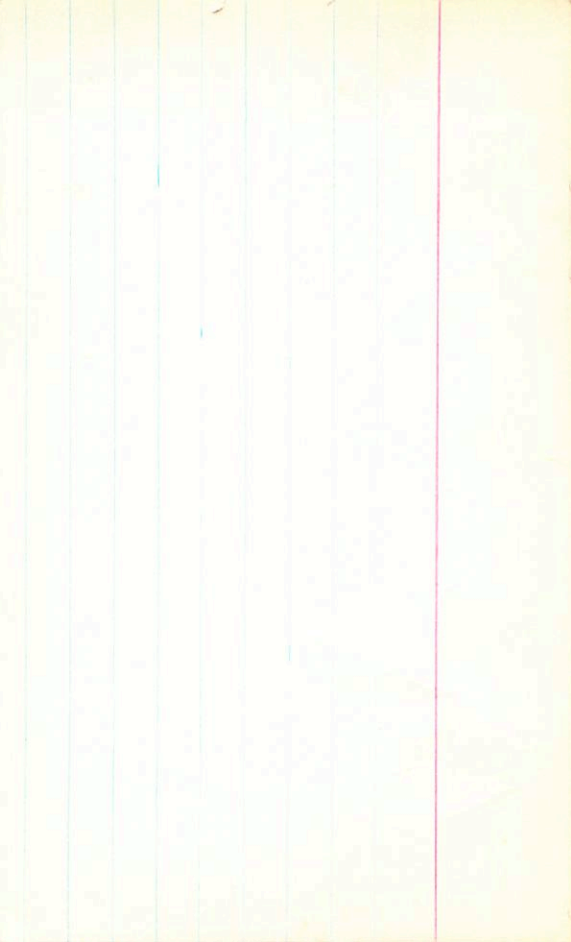
+55;

11.38 +0.55 (2)

1.424 179° LP

LP922531

1978



Chromofach

(P5)

Roo 786

~~23 08 02 700 34~~

LF+ 1763

23 07.0

-20 -1270 Roo  
-215 -1260 G  
-234 -1250 TT  
-235 -1305 G  
+200 27

~004470

G-28-43

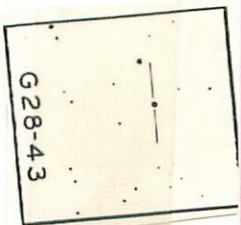
Rekt -112.5

9.96 +0.70 D.00 (2)

11.11.11  
-00500  
19  
11.11.11

9.73 +0.29 (3)

(202)



G28-43

+2070 +300 06

6632329

LF-T1767

23 10.9 +56 54

+560266

5.56 +1.00 +0.89

~~132-178~~

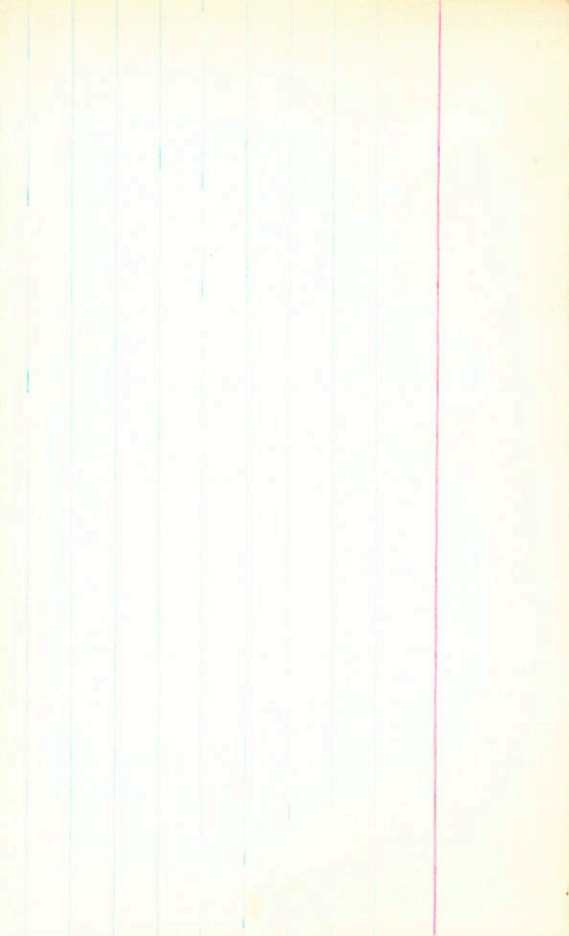
508 +0.355

5.08

150 (10)

146  
500  
1000  
10000  
100000  
1000000

3





BPM97965

-505-1390 BPM  
-570-1410 G

LF+1785

23 19.2 +17 02

L1245-31

X

G6F-8

11.71 +155 +107 (2)

10.32 +1.245 (1)

10.37 +1.245 14 Aug 77

10.35 +1.245 (2)

372