

44 49 119 +22 05.5

171 B1
175 121 LP

C85-19

4 47.8 +22 02.5

16.1 +3

.071 114 ^{stn}

15.23 +19.5 +0.54 ^{stn}

+636-373 ^{stn}

~~Study~~

NO



G85-19

(RI)

4 51 30 +30 45.5

.81 154G

G 39-40

4 49.9 +30 43

14.6 +1

13.56 +136 +105 54

G39-40



500 46 -6 58.5

0.773 228

LP 656-38 4 59.33 → 00.6 12.0 13.3 am

10.54 + 1.335 2670075
 10.50 + 1.33 3070075
 10.52 + 1.33

+

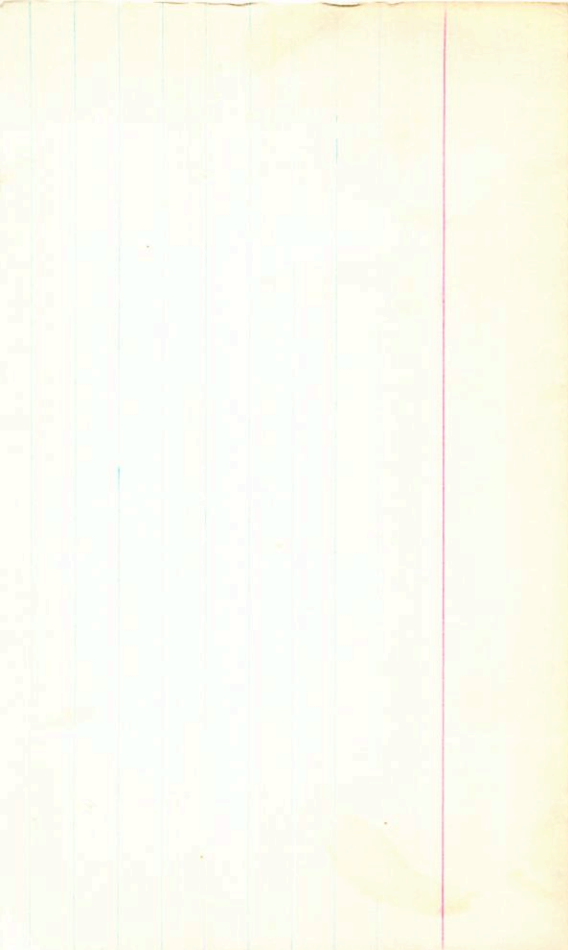
L P 32-329

G 247-50

5 04.0

+70 17

.72 177 G
49



GL65B

LF740415

S 16.7 -3 08

725+130GL

-301061

4053400

4034073

(4")

070 (4")

R2 + 2.75 + 1.05 + 0.85 (2)

X

G94-20

1924 3550.

BPM3710

LFT406

5

16.8

-72

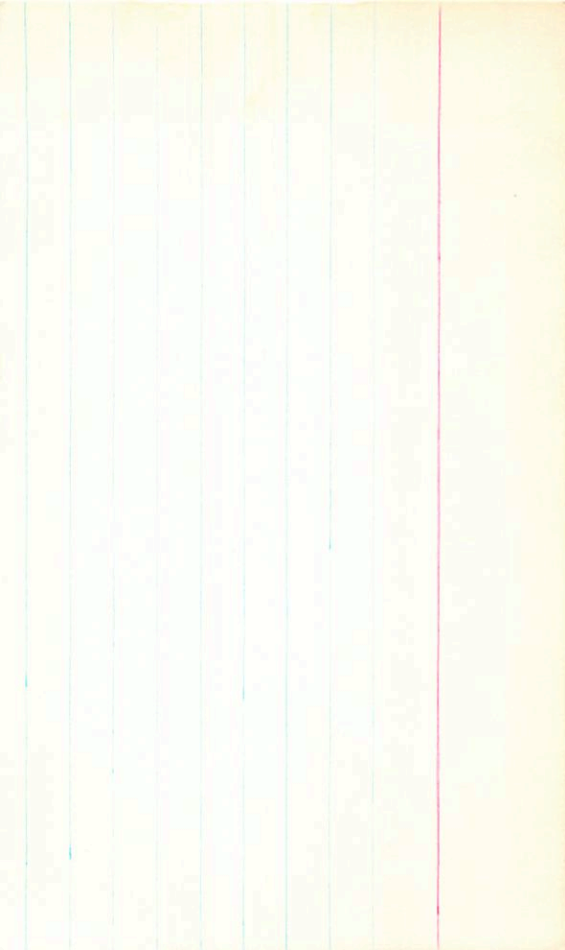
18

L57-44

11.70 + 1.40 + 1.11 ①

10.58 + 0.96 ②

+



6454
1549
~~6454~~

LEFT 403

5

15.6

440 03

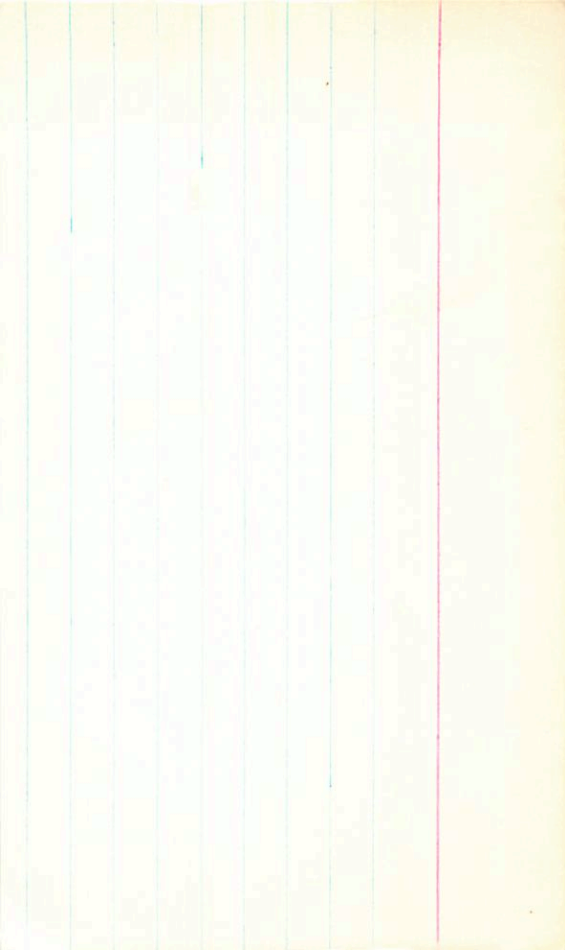
2 Run

HP1729

4.70 + 0.62 + 0.12 (2)

4.47 + 0.205 (SLT)

34411



6120-3A

MBV

5	11	35	+19	42
---	----	----	-----	----

182 1500 cm
1370-650 cm

1FT396

5 09.9 +19 40

10.5 IN 5

+190969

+383

ML

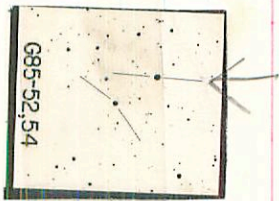
G-85-54

.034 (25)

939 +0.415 (2)

915115GT

+



G85-52,54

Passes

LFT409

5

19.9 +33 09

686-39

11.55 +0.84 +0.30 (A)

174 146 G
174 145 Pass

LFTH2G

5

41.1 +62

13

10.6 +3

QSL0E9+

G249-5

.85 165 G-

G-96-50

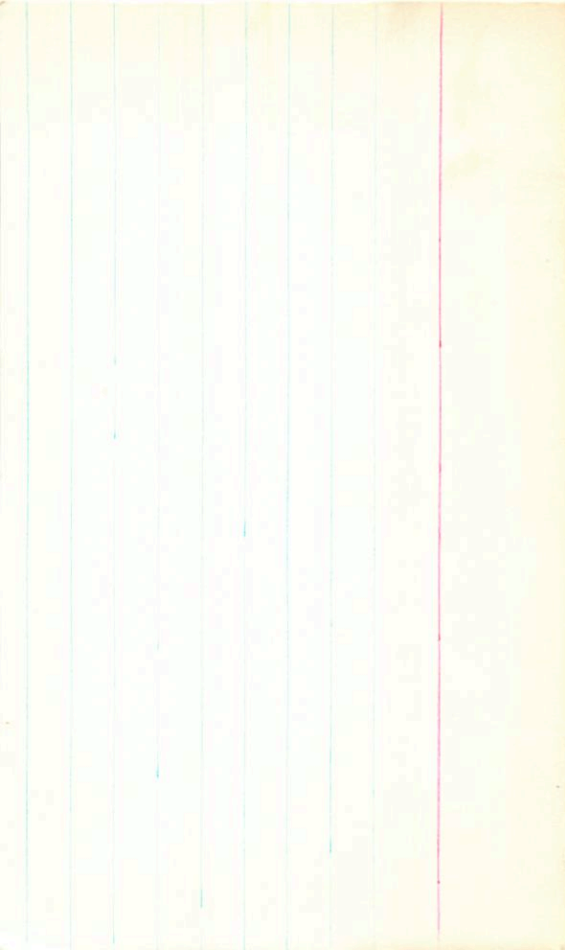
5 40.5 440 556

+625 -1035 G
+600 -1015 H
+600 -1000 T

15.10 H.1.5 7.1.10 ①

.010 ②

625 ± 0.01 Lush



+625-1035 G
+600-1015 J

G-96-50 ~~8~~ 40.5 +40 56 15.8 +3

15.12 +156 +1.1

.010 (G)

Ross 411

LFT 411



5 26 38 +9 38

.81 195 G
.84 192 Ross

5 25.3 +9 37

14.2 m/s

G-97-42

⁷¹ ¹⁰
0.098 units

95 29

110 v 9

1165 12

11.02 + 1.165 17 Jan 76

$M_j = -19.7$ + only

0.071 ± 0.08 prob

310

2.54
1958

770



G97-42



Ross 406

RT

5	28	15	13	56.5
			+32	07

.50 193 Pans
 .72 202 G

WFT 414

5 26.6 +32 03 13.7+1

G86-44 ✓

12.88 + 0.86 + 0.45 (1)

[10.65 + 0.10]^{NO}



G86-44

Gc7194

+485-510 GC

LF+431

S 42.6 +37 16

+3701312

2.36 +0.82 +0.80 ①

G-96-51

.067⑥

H034230

05398-0530 0541¹⁵ ~~05~~ -0529 14.3 16.0 m

~~Nothing there~~

" 0.971 3523⁰³

1777 (X)

(1777)

1343

~~1343~~

1340

4156188887

15312489

15312489 (2)

(RT)

5 54 05 + 00 42

181 1608
182

G-94-45 ✓ 5 52.8 + 0 42 13 17 161

~~(RT)~~

14.55 + 1.8 + 1.06 (2)

610

X

14.09 + 0.50 27.26

524 1402 + 0.50 27.26

1406 70.57

+ 515

G99-45

