

196795

20 38 00 +04 51 760 +1.22

orbit

4920.0  
5H(49)

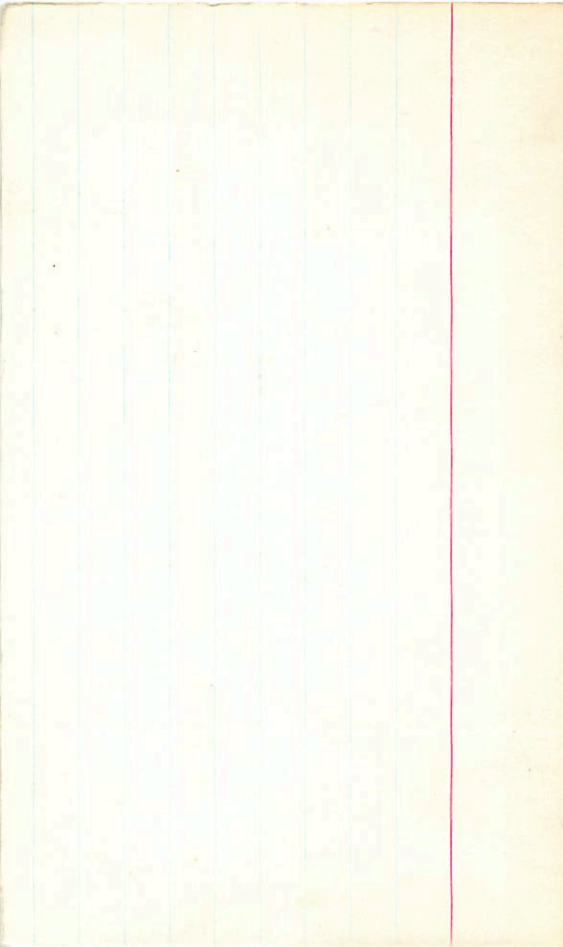
→

( 7.16	+54	N
<del>7.01</del>	+0.575	29 Apr 69
7.07	+0.535	30 Jun 69
<u>7.09</u>	<u>+0.535</u>	6 July 69
7.08	+0.535	

6.70  
70

6.00 - 4.60  
1.40

175



+860 +85 GC

6628771

6FT1586 20 37.1 +4 48

+404510  
62473 7.25

HD196 7.19 +0.5/5 4

DM 0.54 44

27 years?

10.53 6mm

10.50

X

6.5  
6.5



20 33 13 -18 07.5

181 2000

L P 815-36 20 31 48 -18 127 147 15.7 h

LHS 3563 → 20 31 48 -18 12 42

*Graph*

marked w 150" grid 1450  
E . ① 20 81 47.2 -17 12 45 marked

14.14 +0.74 4 meter

*for*

X



BPM65537

20 40 10 -22 23.5

827 125 BPM

LFT1560

20 38.7 -22 29

115 RD

-2055M ✓

N ✓

X

1401966A

,0340

fresh ✓

9.09	+0.57	17 Sept 77
8.97	+0.51	14 Aug 77
<u>9.03</u>	<u>+0.54</u>	⊕

X

f. =

460-5477 ✓





BPM1221

20 42 36 -81 48

.731 137

LFT 1559

20 38.1 -81 53

13.2 m

L-23-30

9786 5670  
-2255 -5222

572 -541  
1141

7355

S

⊙

402

10.28 + 1.06 45 Sep 76

10.24 + 1.055 14 Aug 77

10.26 + 1.055 (2)

X

Wagstaff

+670 +175 WAF  
+920 +1780 G

LFT1564

20 419 +55 09 16.8 117

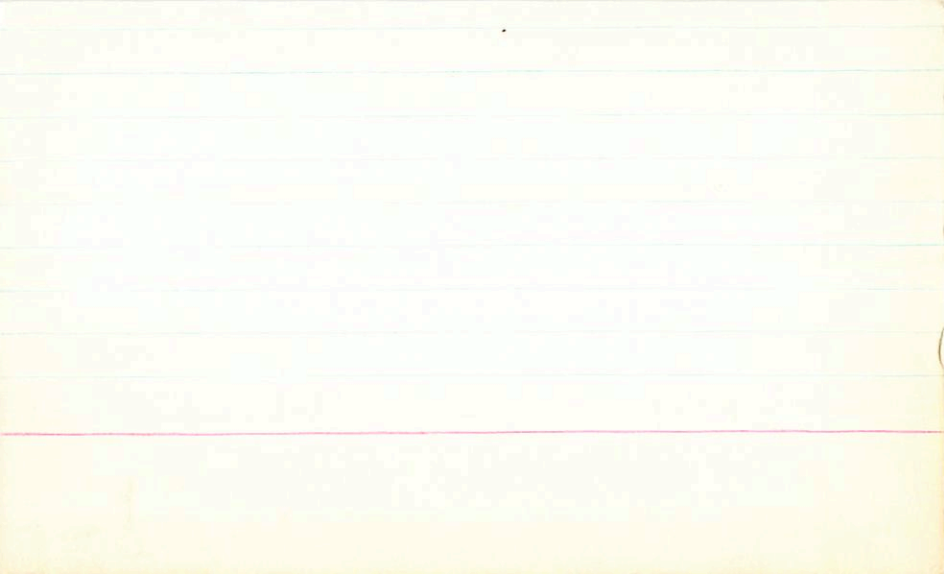
G23113

W

16.5 +3

.064 (5)

dmse-23;



071 226 B

20 52 20 +10 31.5

25-8 20 51.2 +10 26 15.4 +2

12.39 +1.315 13.705  
12.37 +1.315 22.685  
12.35 +1.315 24.00

11.06

(+)

G 25-8



1030PM 697

20 4420 -51 58

LFT 1566 20 42.5 -52 03 140m

L279-66

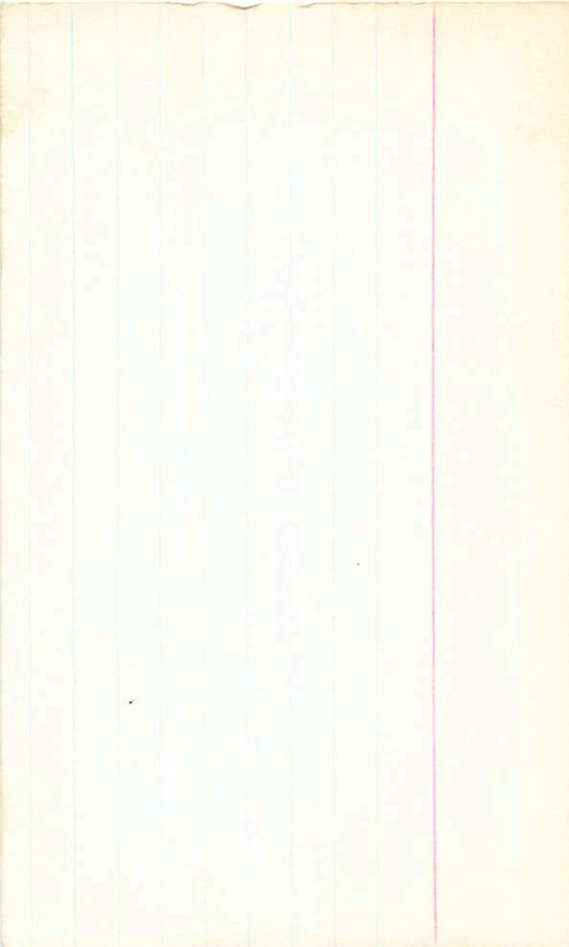
X

12.17	+0.98	45.07
12.13	+0.97	14.07
12.15	<u>      </u>	<u>      </u>
		70.975

①

X

16.19



η<sub>lep</sub>

LFT1570

20 44.3 +61 89

G628962

345 +0.42 +0.60 ⊕

H0198149

3.04 +0.335 ~~slat~~

.671 ⊕ 52

H009457

+90 +820 cc





718 240 BFM

~~5~~

-640 -370 604  
20 5300 -2 50  
20 51.4 -2 57

LHS  
3596

11.18 + 1.30 + 1.11 ①

10.40 + 0.61 ②

13

10.24 + 0.545 50087

way

LFT 1577

-808659

4997

Top

03518

3557

way

+

-648  
-357  
591  
195  
+12

100

Lin 18-2707

LFT 1580

52.3

20

52.3

+61 58

+610208

8.54 + 1.48 + 1.26 ①

G231-19

7.58 + 0.81 ②

1137 ⑤

H5144305

174 149 G-  
177 180 G-



✓  
625-9

20 5-107 +9 45

20 52.9 +9 39.5 14.9+2

84 1146

~~1790-340 15~~

✓  
625-9

~~1790-340 15~~

0.034 (2) 180.0 +795  
1.5

✓

0.011

12.44 +0.95 13.39  
12.40 +1.56 13.96  
12.42 +0.95 13.37

12.8  
11.1  
11.4

11.47

9.5

1.80

12.5

625-9



✓

20 56 03 +11 55

179 1516

G-25-10

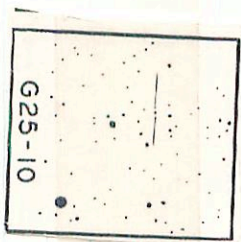
20 54.8 +11 49.5

12.33 +142 +108 55

10.56

11.37 +0.80535476  
 11.41 +0.81224777  
 11.39 +0.81

↓



G25-10



1000193

LFT1585

+780 -270 100  
+785 - 11

20 541 -5 03

.808 104BP

.064 (16)

11.87 + 1.49 + 1.06 (3)

1.4 10.54 + 1.14 (3)

DM 16.68 + 1.13 + 0.64 (3)

X

20	55	32	-09	55.5	0.716	870
20	54	12	-10	02.2	14.3	15.5-h-m
20	54	12	-10	02.2		

L0756-24

WHS 3603  
1950

*handwritten scribble*

355  
210  
6

X

+ 800 - 720 Gum

.83 154 G-  
1.11 160 way

way/301

LFT 1590 20 56.6 +322

G 25-11

~~11.47 + 1.42 + 1.25~~  
12.06 + 1.89 + 1.09 (4)  
11.14 + 0.68 (2)

323  
- 722  
KGS<sup>22</sup>

.017 (23)

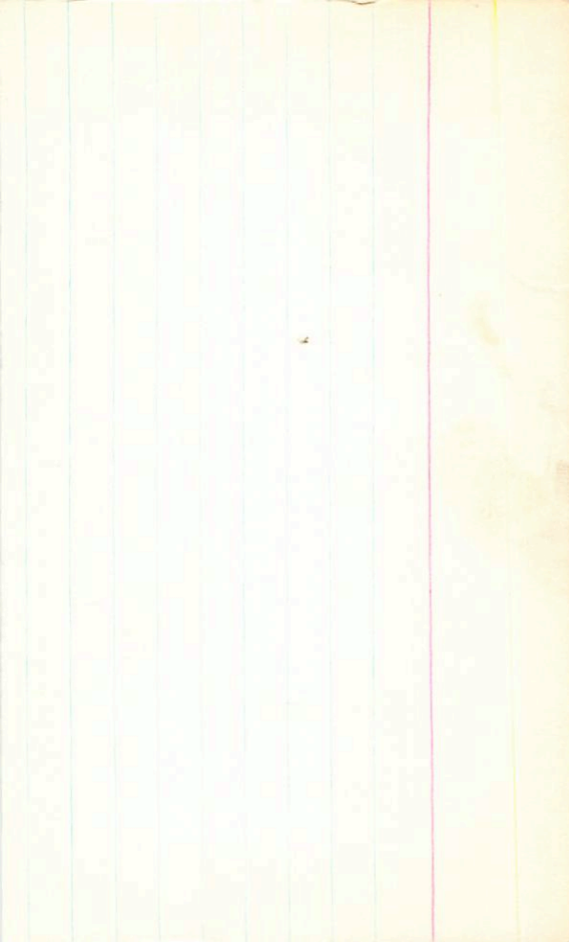
M  
V

(036)

10.76  
9.22  
1.54

+223-722 VV

5



was/1300

LF71588

+770 -  $\pi$

$\boxed{20 \ 56 \ 14 \ +22 \ 16}$

20 55.2 +22 10

.72 108 G-D  
192 97 wasy

14.1 +3

13.5 M3

G187-9 ✓

8860  
11116

+771  
+250

VM

VM

10.81 +0.94 45476  
10.85 +0.94 227477  
10.83 +0.965

985

+



G187-9

20 56 18 -19 39.5

LP 816-28

20 54.9

-19 45.4

140 158 m

~~2~~ ~~5~~ ~~verified~~

1389

1385

1397

+0.66 22/6/77

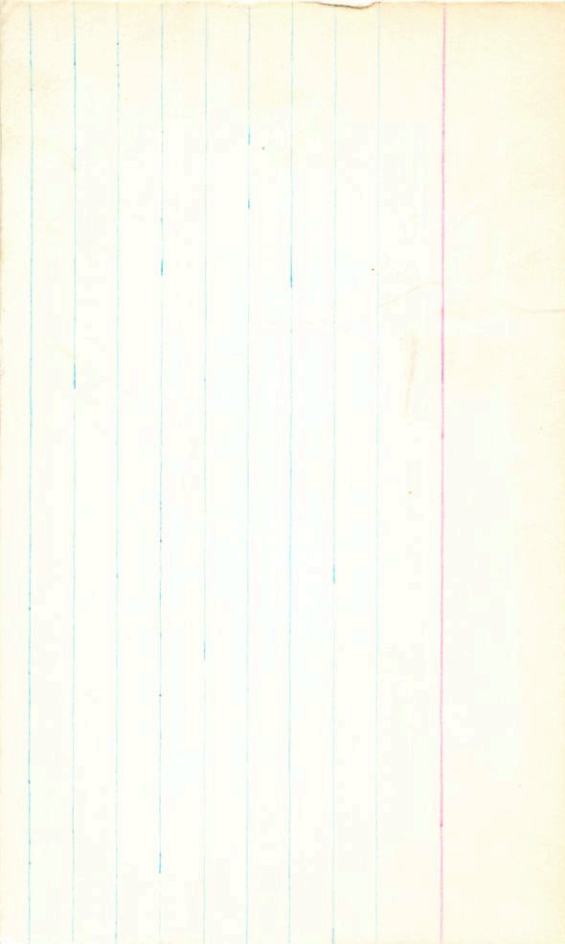
+0.64 14/6/77

+0.65 5

X

13.22  
5.15

506 980





R000769

LFT 1597

21 02.2 -17 067

21	03	50	-17	02
----	----	----	-----	----

19571

050 (2)

-471

11.48 + 1.44 + 108 (3)

10.42 + 0.84 (2)

19572

10.44 + 0.84 (1)

11071

K

123

-980 -2080 R000  
-1025 -2020 R001  
-435 -2140 R

