

# Solar Bulletin

THE AMERICAN ASSOCIATION OF VARIABLE STAR OBSERVERS — SOLAR DIVISION

P.O. Taylor, Editor  
P.O. Box 1476  
Boca Raton, FL 33429-1476 U.S.A.



Volume 39 Number 5

May 1983

## Relative Sunspot Numbers For May 1983

R <sub>a</sub> final			*R <sub>I</sub> prov.		
1) 108	11) 105	21) 108	1) 114	11) 101	21) 110
2) 101	12) 116	22) 108	2) 104	12) 114	22) 104
3) 89	13) 129	23) 103	3) 94	13) 132	23) 96
4) 82	14) 135	24) 104	4) 85	14) 125	24) 111
5) 89	15) 125	25) 87	5) 95	15) 130	25) 106
6) 80	16) 98	26) 90	6) 88	16) 99	26) 115
7) 94	17) 93	27) 73	7) 92	17) 93	27) 90
8) 96	18) 99	28) 71	8) 93	18) 99	28) 68
9) 115	19) 81	29) 87	9) 110	19) 88	29) 88
10) 110	20) 116	30) 72	10) 121	20) 105	30) 75
		31) 66			31) 60

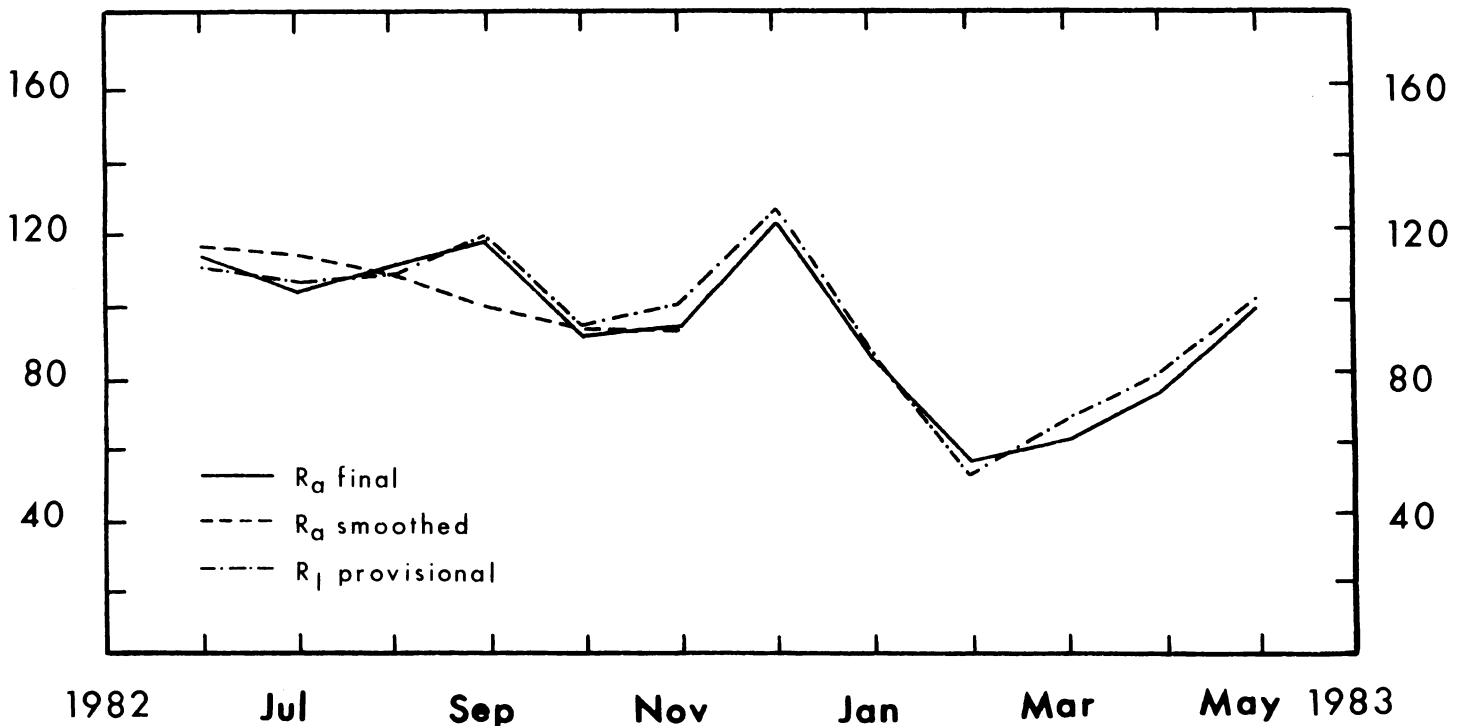
Mean = 97.7

Mean = 100.2

.....  
The smoothed mean American relative sunspot number (Waldmeier equation) is 92.6  
for November 1982.

R<sub>a</sub> final was computed from the reports of 31 members of the AAVSO international  
sunspot-observer network.

\*Sunspot Bulletin, 1983, No. 5.  
.....



Sudden Ionospheric Disturbances Recorded During May 1983

Records were received from A1, 9, 19, 26, 28, 31, 46, 49, 50, 51, 52, 54, 55, 56

Day	Max	Imp	Def	Observers	Day	Max	Imp	Def	Observers
1	03:01	1-	5	A31, 52, 55, 56	12	06:39	1-	5	A52, 55
1	07:41	1+	5	A52	12	12:50	1-	5	A1, 19, 26
1	09:24	1-	5	A52	12	13:50	3	5	A1, 19, 26, 31, 50, 51, 54, 55, 56
1	13:20	1	5	A1, 19, 31, 51, 54, 56	12	16:27	1	5	A19, 31, 55, 56
1	18:54	2	5	A1, 19, 31, 51, 54, 55, 56	12	16:43	1-	5	A19, 31, 55, 56
1	21:02	1+	5	A31, 51, 54, 55, 56	12	17:23	1-	5	A55
1	21:07	1	5	A19, 49, 56	12	17:42	1-	5	A55
1	23:14	2	5	A1, 31, 49, 50, 51, 55, 56	12	20:50	1	5	A55
2	15:48	1-	5	A1, 19, 31, 50, 54, 55, 56	13	06:39	1-	5	A52
2	16:01	1-	5	A1, 19, 31, 50, 55, 56	13	14:33	1+	5	A1, 19, 26, 31, 49, 50, 55, 56
2	18:35	1+	5	A1, 19, 31, 49, 50, 54, 55, 56	14	07:38	1-	5	A31, 52, 55, 56
2	20:26	1-	5	A31, 55	14	08:45	1-	5	A52
5	00:27	1+	5	A31, 55, 56	14	18:15	1-	5	A31, 55, 56
5	03:44	1-	5	A31, 55, 56	14	19:28	1-	5	A31, 55
5	05:23	1-	5	A52	15	06:30	1	5	A52
5	09:19	1-	5	A52	15	06:49	1	5	A31, 52, 55, 56
5	14:05	1	5	A1, 19, 31, 49, 56	15	08:15	1-	5	A52
5	19:08	1-	5	A1, 19, 31, 55, 56	15	09:00	3+	5	A31, 52, 55, 56
5	20:15	1-	5	A31, 55, 56	15	14:10	1+	5	A26, 31, 49, 50, 55, 56
6	06:57	1-	5	A52	15	16:16	1-	5	A55
6	13:45	1-	4	A19	16	06:15	1-	5	A52
7	07:48	1-	5	A52, 55, 56	16	06:30	1-	5	A52
7	17:22	1-	5	A1, 19, 31, 49, 50, 54, 55, 56	16	13:49	1-	5	A1, 52
7	19:30	1+	5	A1, 19, 31, 46, 49, 54, 55, 56	16	14:08	1+	5	A1, 52, 54
7	22:22	2	5	A1, 19, 31, 46, 49, 50, 51, 54, 55, 56	16	17:00	1-	5	A1, 26, 31, 50, 55, 56
8	03:15	2	5	A31, 52, 55	16	17:41	1+	5	A1, 31, 55, 56
9	02:01	1-	5	A31, 55	17	20:19	1	5	A1, 26, 49
9	07:21	1-	5	A52, 55	18	07:30	1-	4	A31, 56
9	14:21	1+	5	A1, 19, 31, 46, 49, 50, 52, 54, 55, 56	18	13:24	1-	5	A1, 49
9	16:37	1	5	A1, 19, 31, 50, 55, 56	18	17:22	1-	5	A31, 55
9	23:11	2	5	A1, 19, 28, 31, 46, 49, 50, 54, 55, 56	20	00:50	1-	5	A31, 55
10	12:15	1	5	A1, 19, 49, 52, 54	20	01:53	1	5	A31, 55
10	16:34	1	5	A1, 31, 49, 54, 55	20	05:48	1-	5	A52
10	18:46	1+	5	A1, 19, 31, 49, 54, 55, 56	20	06:58	1-	5	A52
11	00:11	2	5	A31, 46, 55, 56	20	08:17	2	5	A52
11	04:06	1	5	A31, 52, 55, 56	20	15:15	1-	5	A31, 55
11	07:00	1-	5	A52	20	17:08	1-	5	A26, 31, 55
11	08:06	1	5	A54	20	18:15	1-	5	A31, 55
11	13:33	1+	5	A1, 31, 54, 56	23	08:53	1-	5	A52
11	14:55	2	5	A31, 55, 56	23	18:26	1-	5	A31, 54, 55
11	15:17	1-	5	A31, 54, 55, 56	24	16:12	1-	5	A31, 55
11	19:45	1-	5	A1, 19, 31, 50, 54, 55, 56	25	10:02	1	5	A52
					26	23:32	1-	5	A31, 55
					28	00:43	3	5	A31, 55
					29	21:16	1-	5	A31
					30	16:40	2	5	A26, 31, 55
					31	03:36	1-	5	A31
					31	13:55	1-	5	A1, 26, 46, 49
					31	15:08	1+	5	A1, 26, 31, 55
					31	18:28	2	5	A1, 9, 26, 31, 46, 55
					31	19:17	1-	5	A31, 55
					31	20:26	1-	5	A31, 55

SID Analyst:

R.B. Ammons  
 411 Keith Avenue  
 Missoula, MT 59801  
 U.S.A.